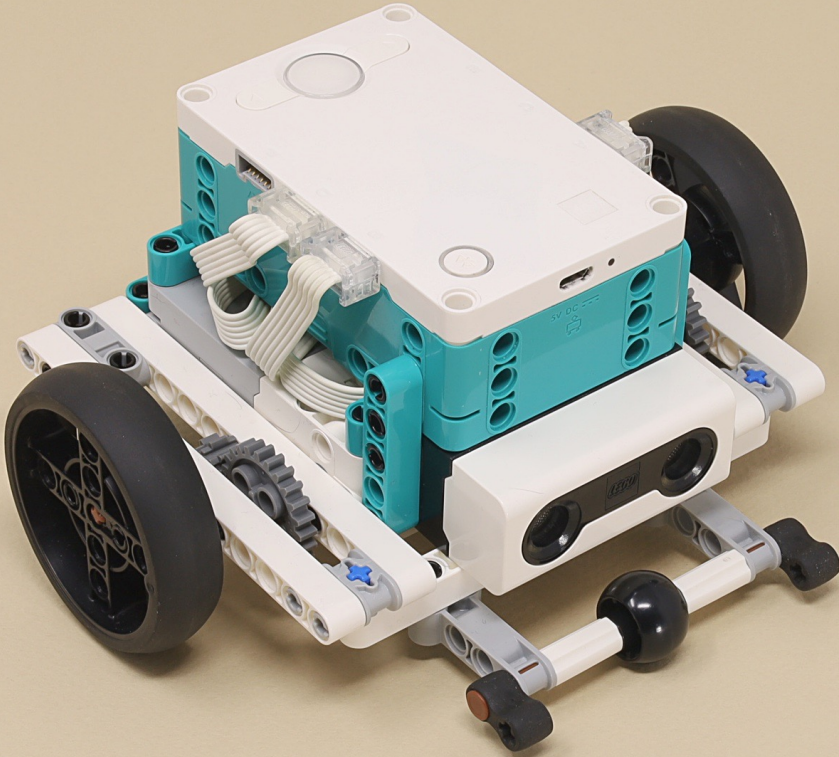


# Sprinter



Scroll for  
building  
instructions





9



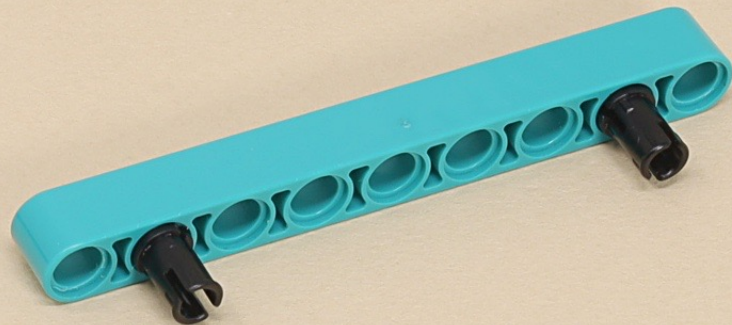
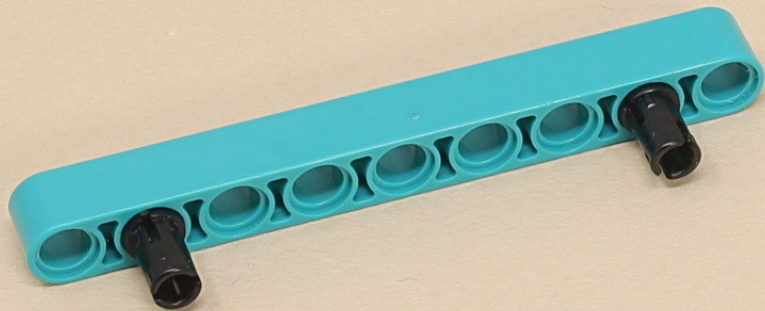
9

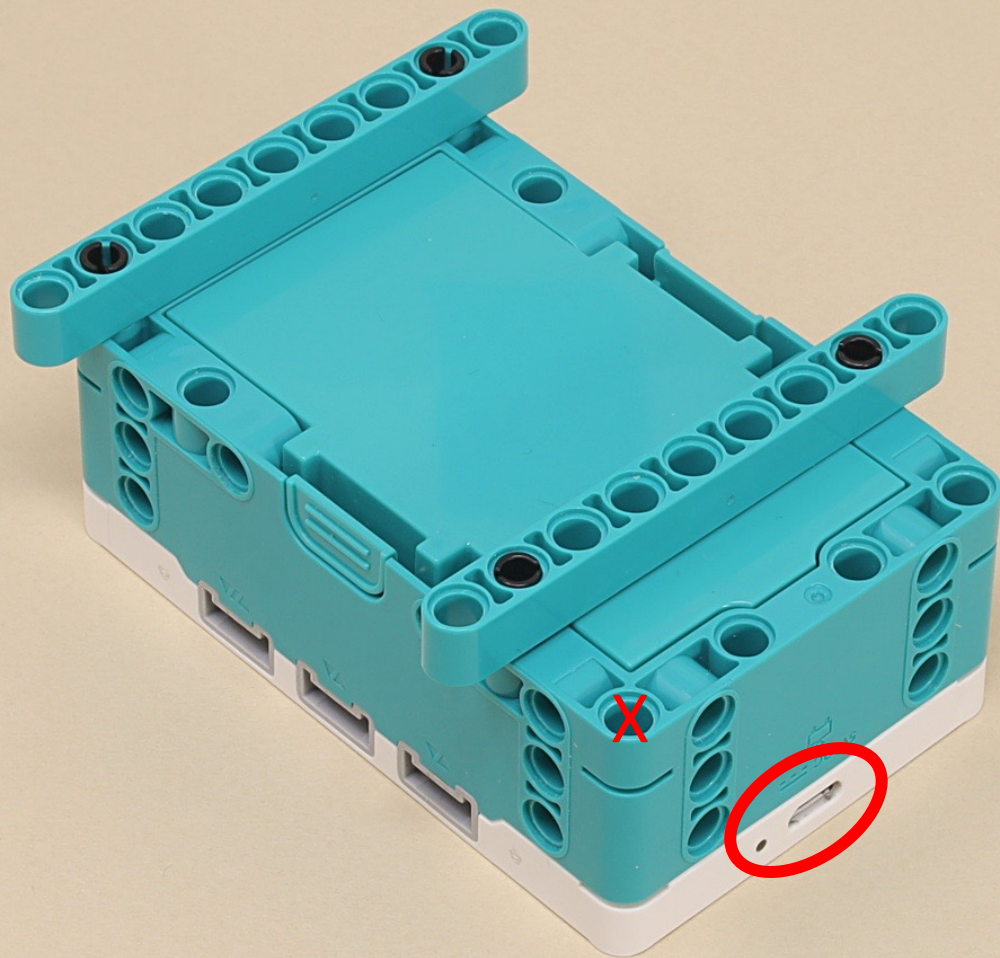


(12 x)



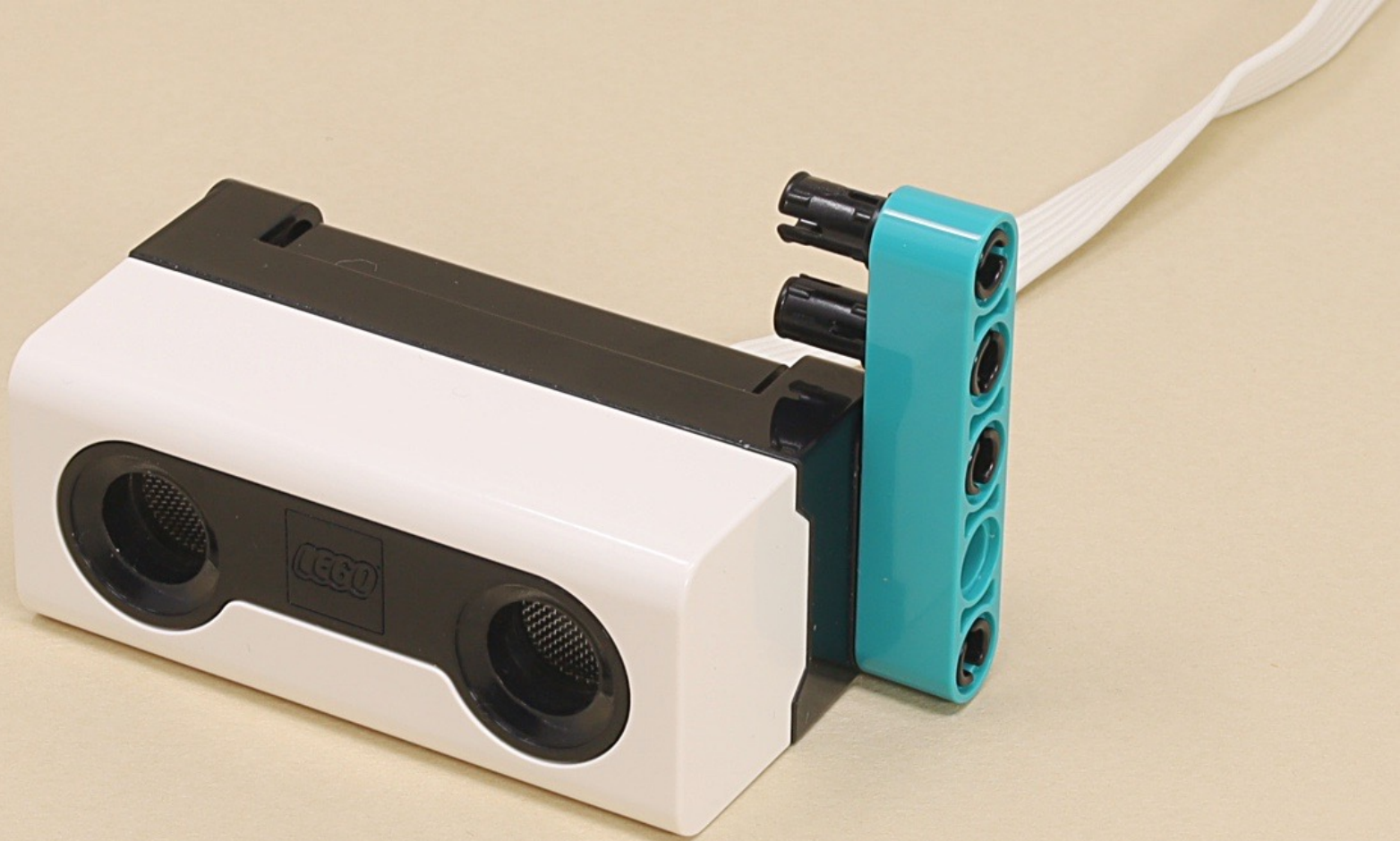




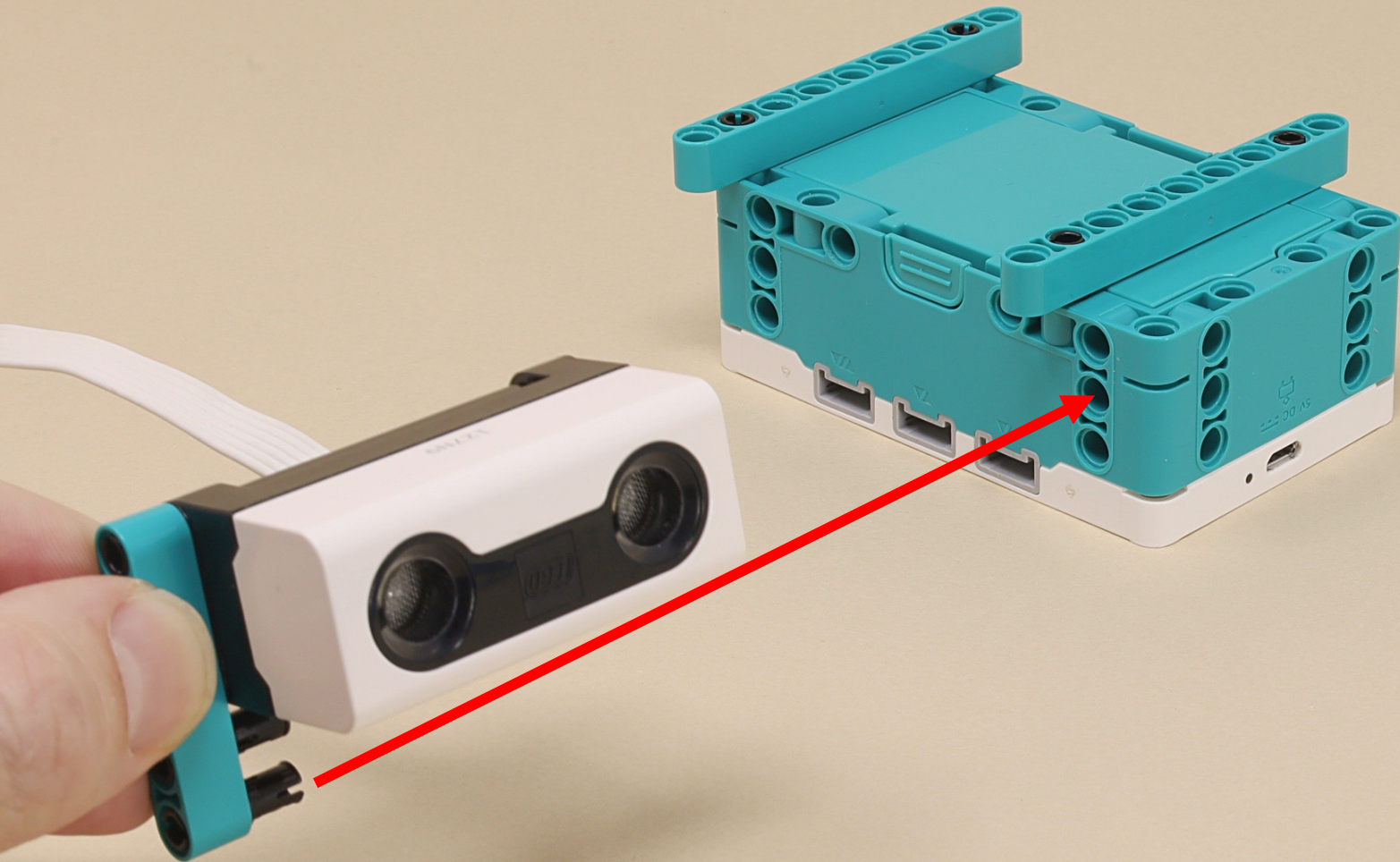


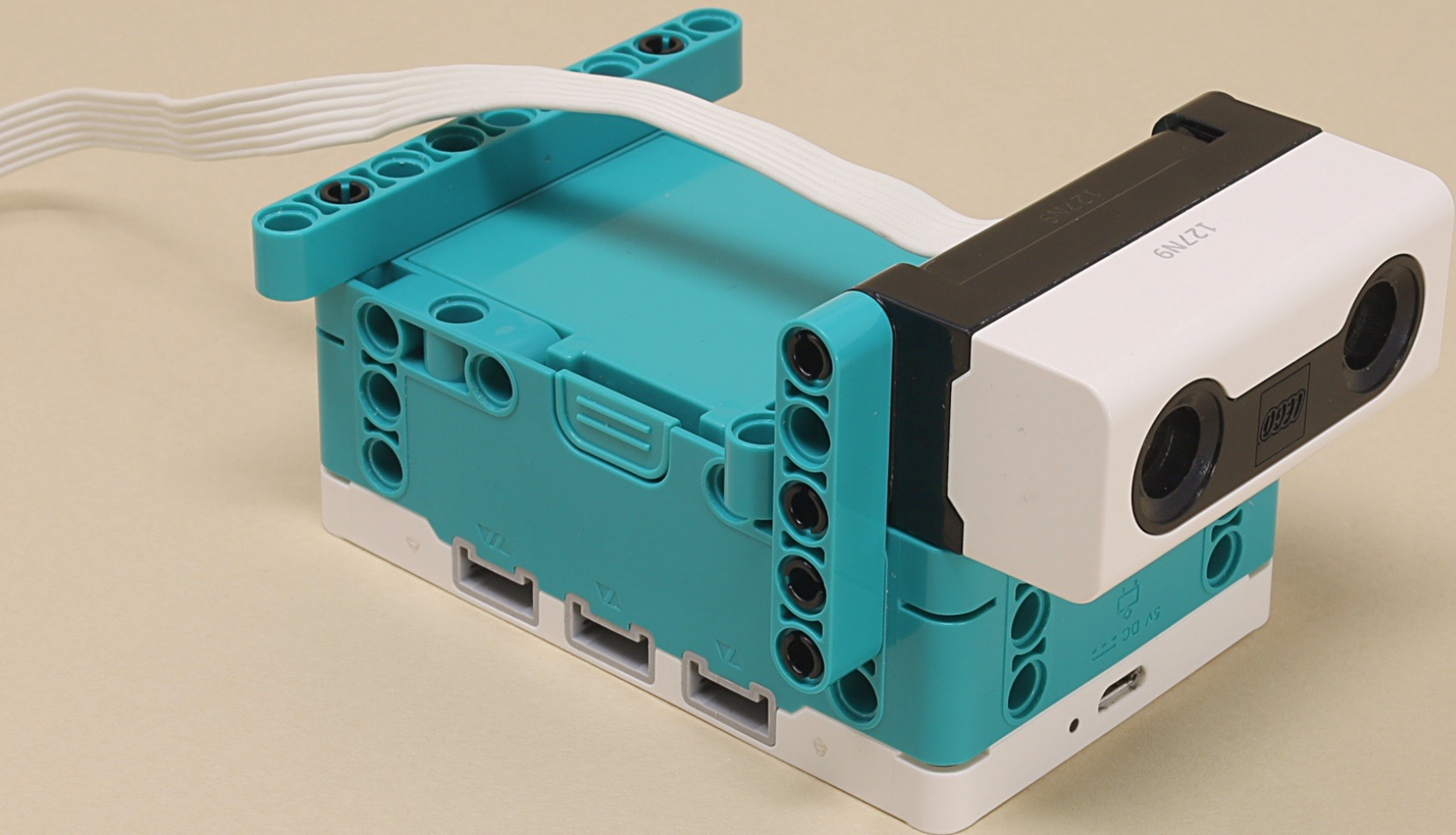




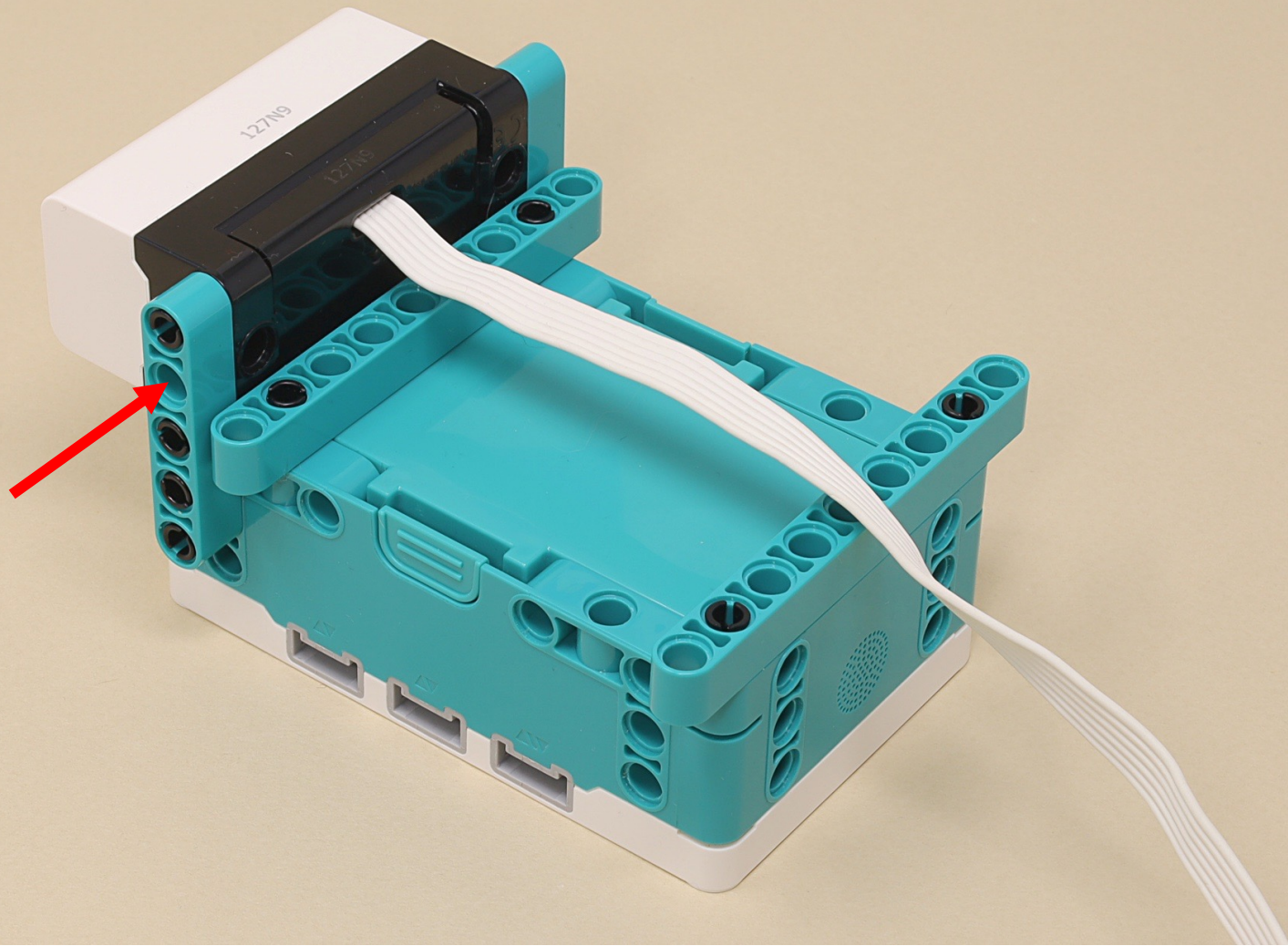




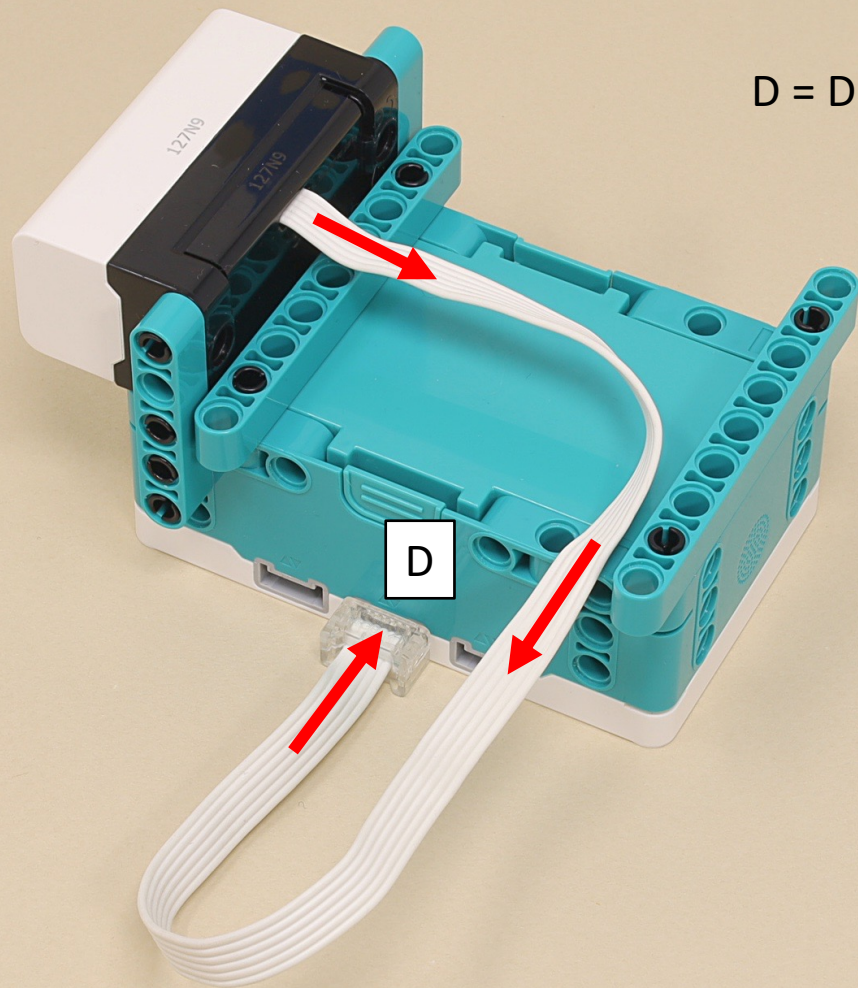








D = Distance Sensor







13



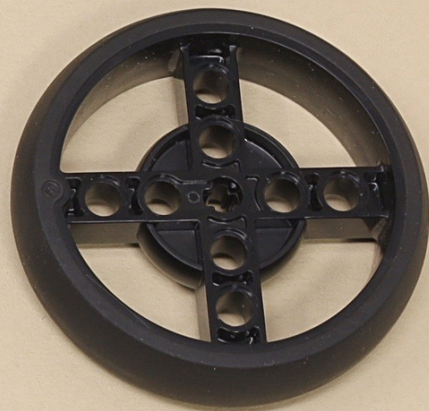
13



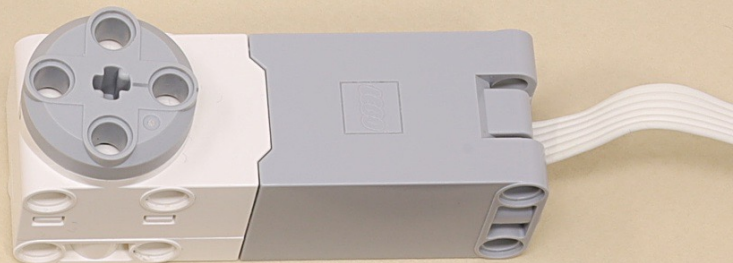
5

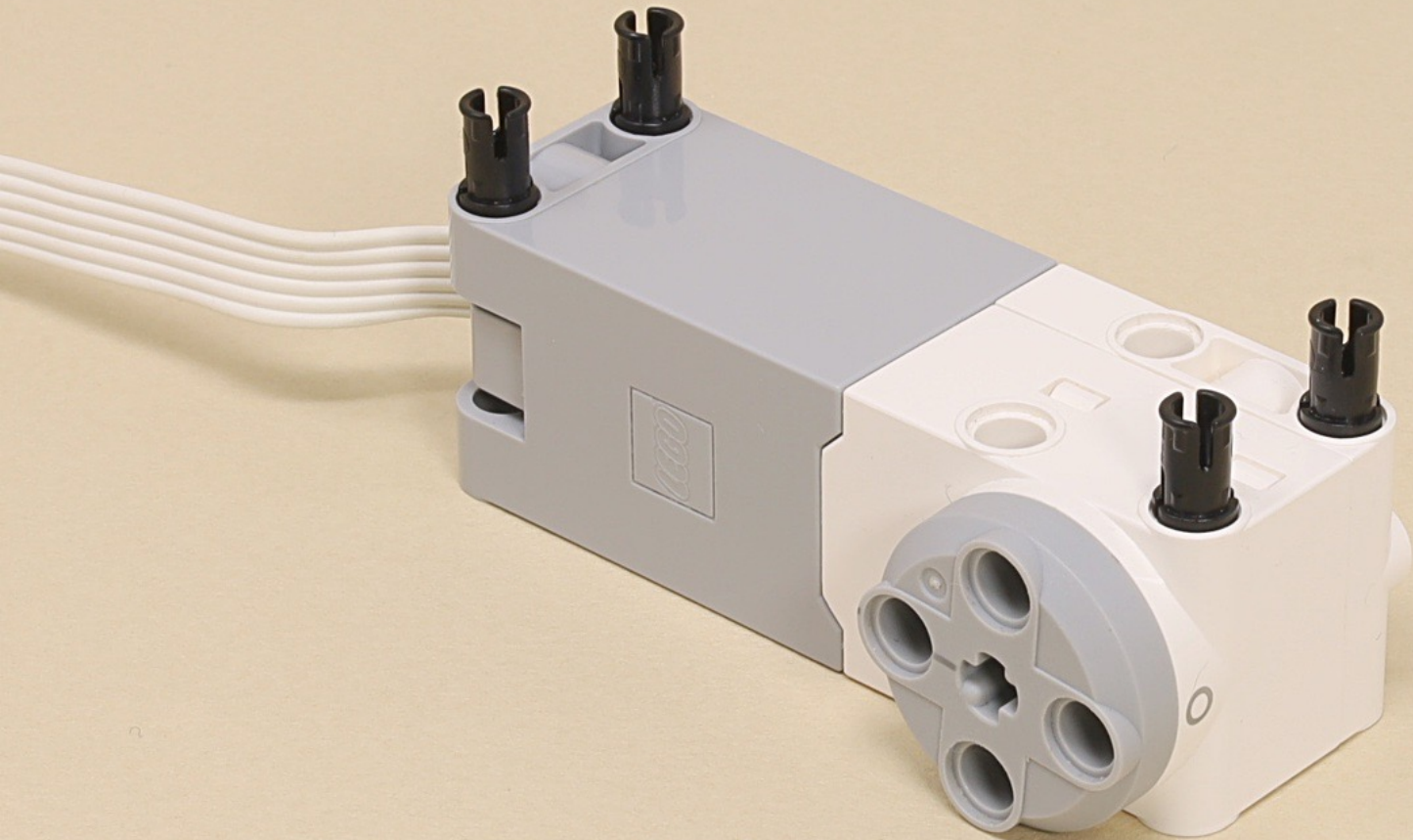


4

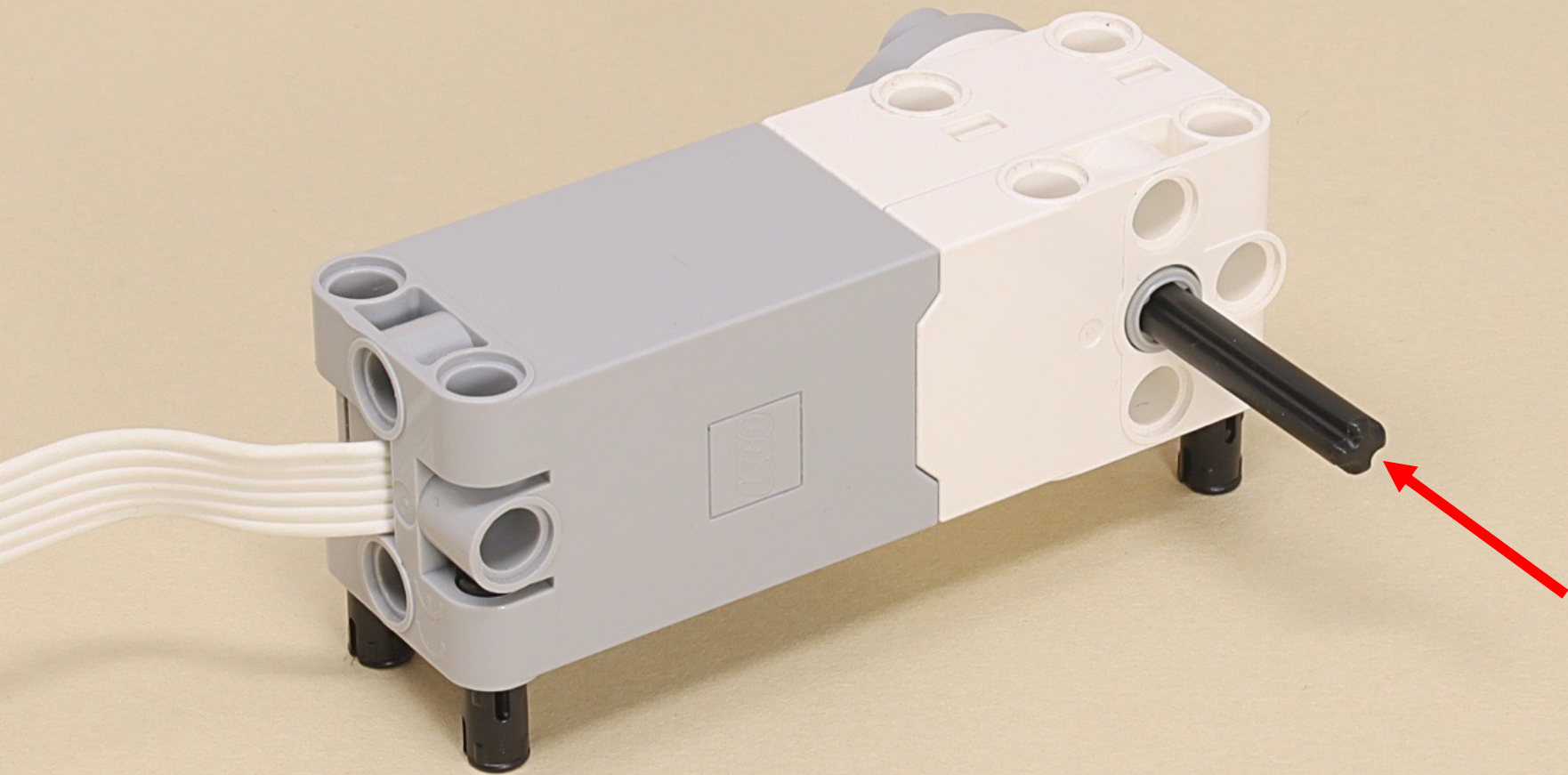


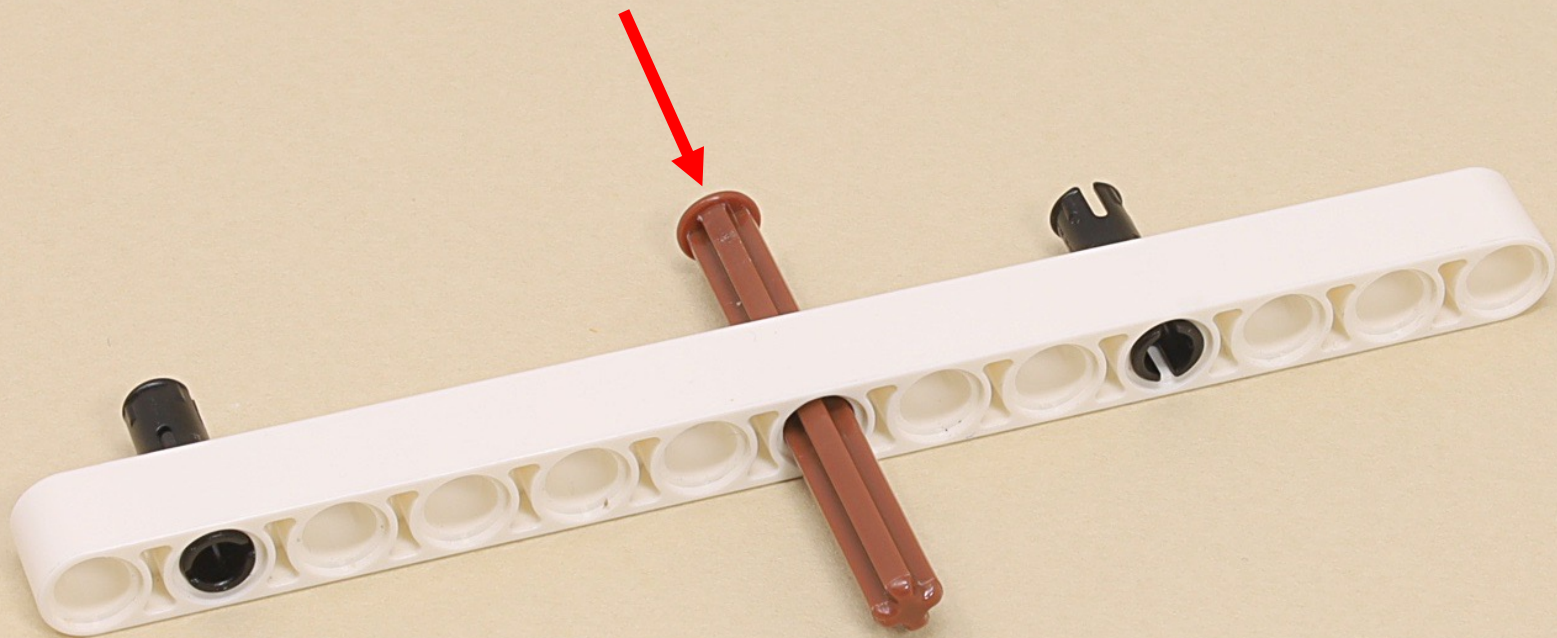
(9 x)



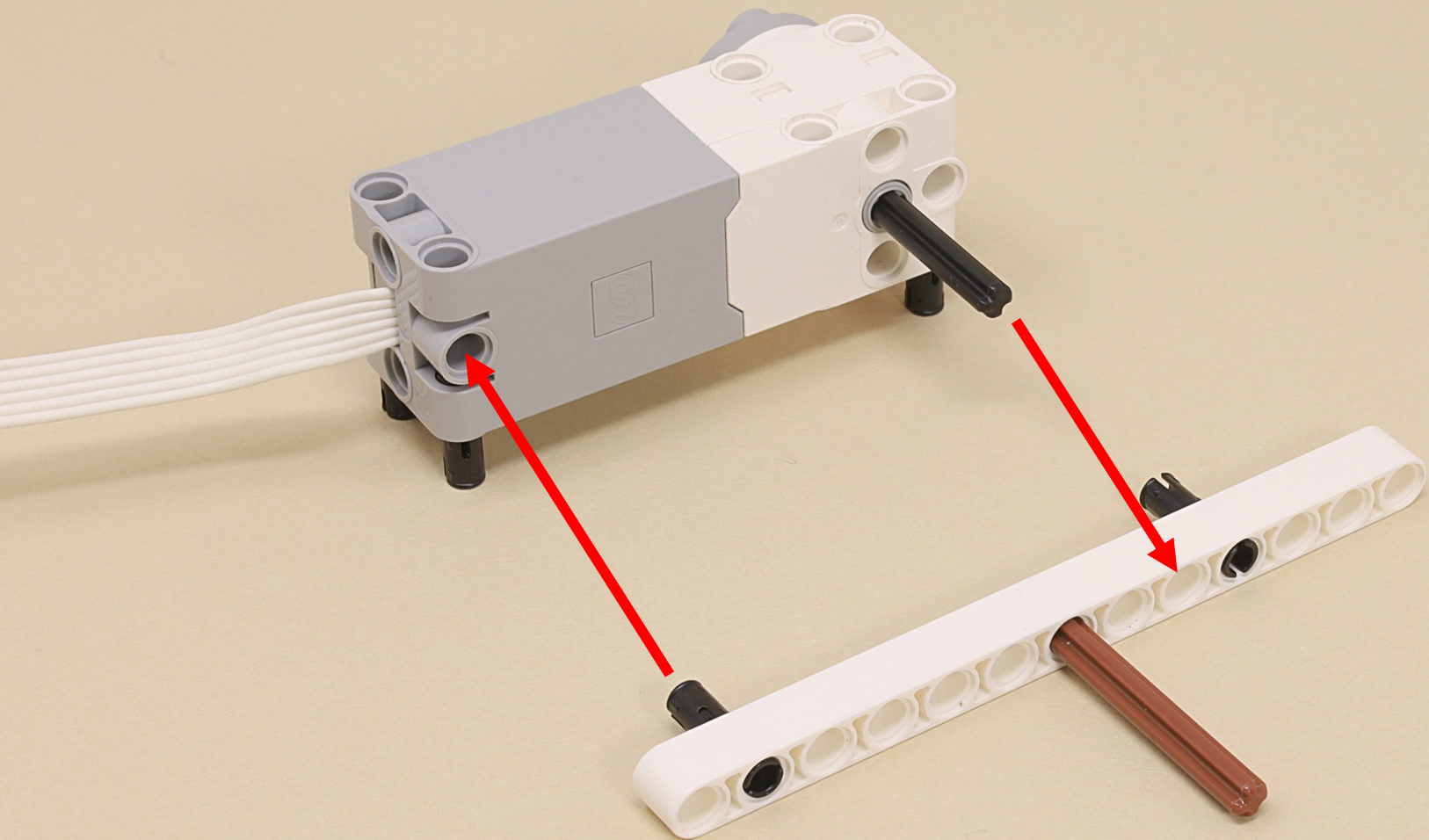


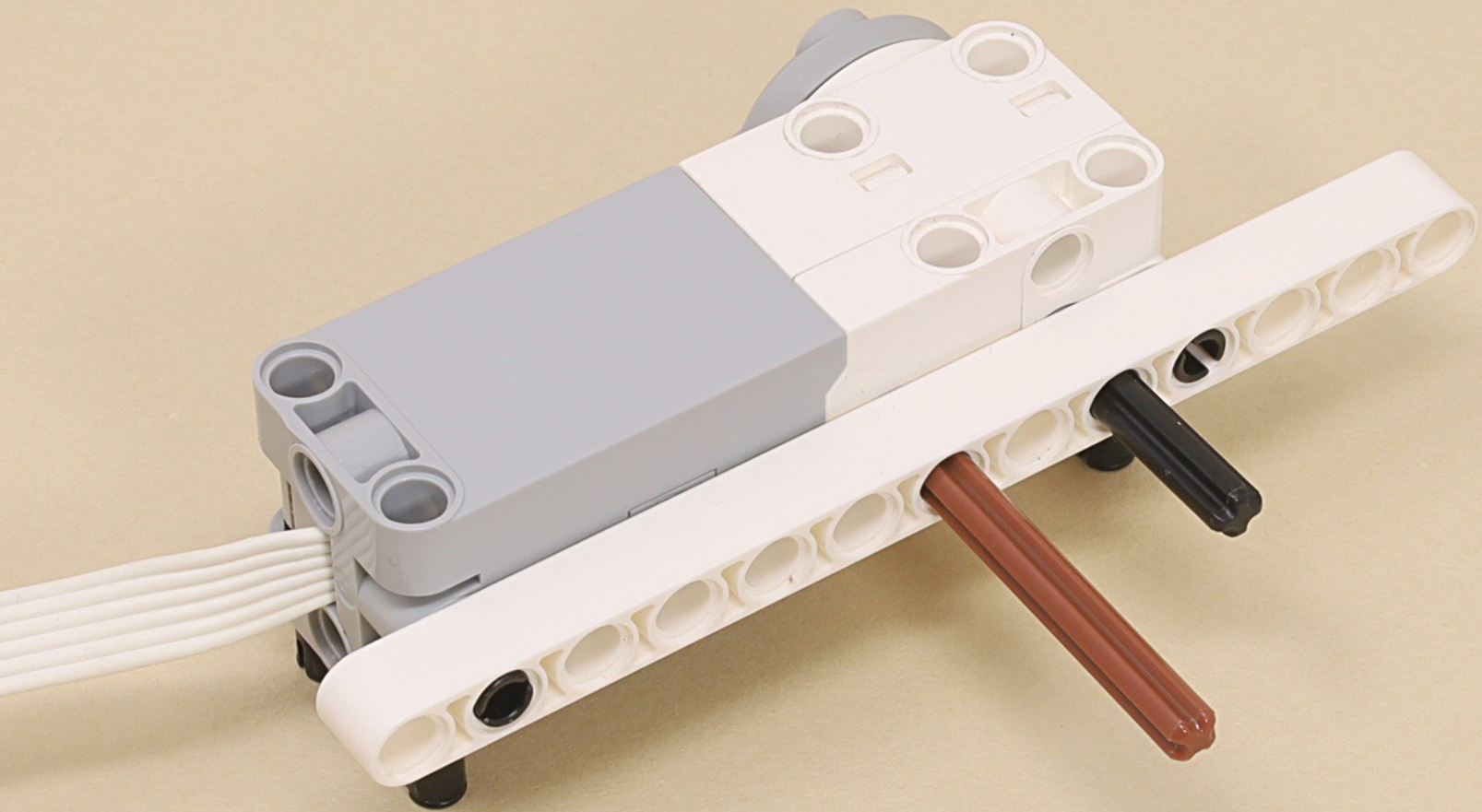




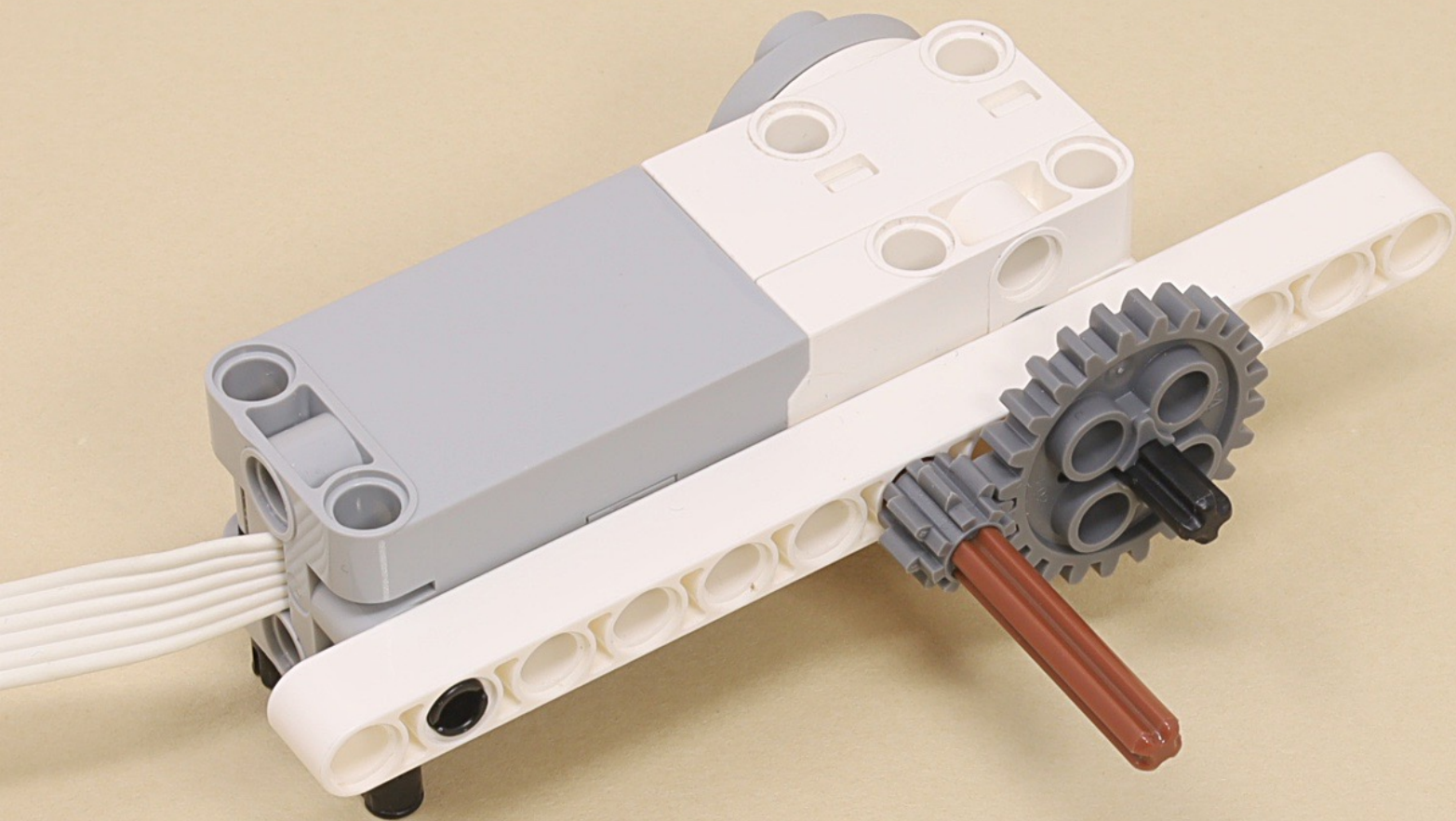


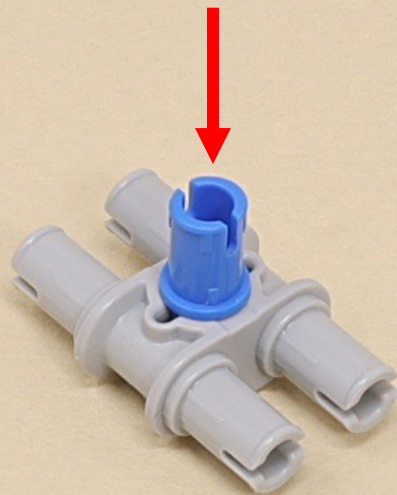
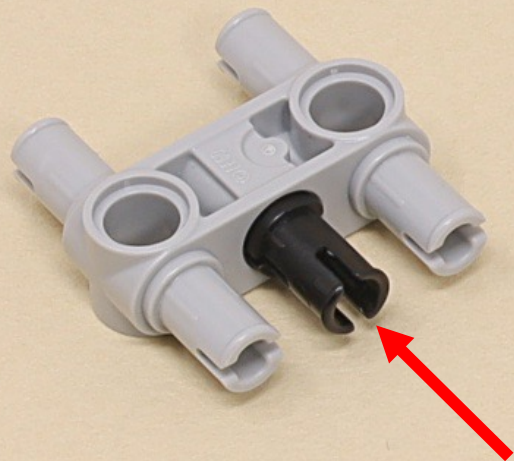




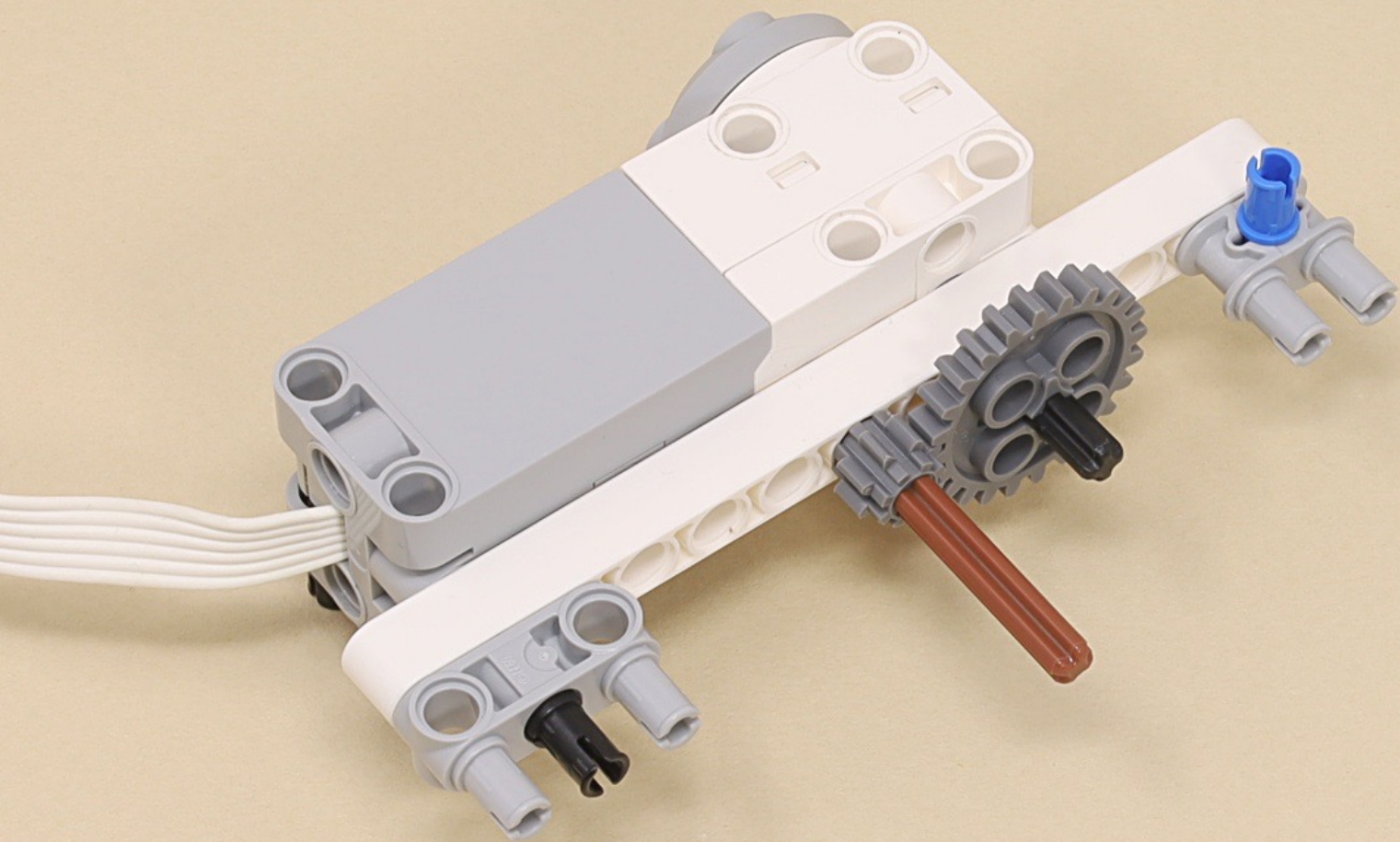


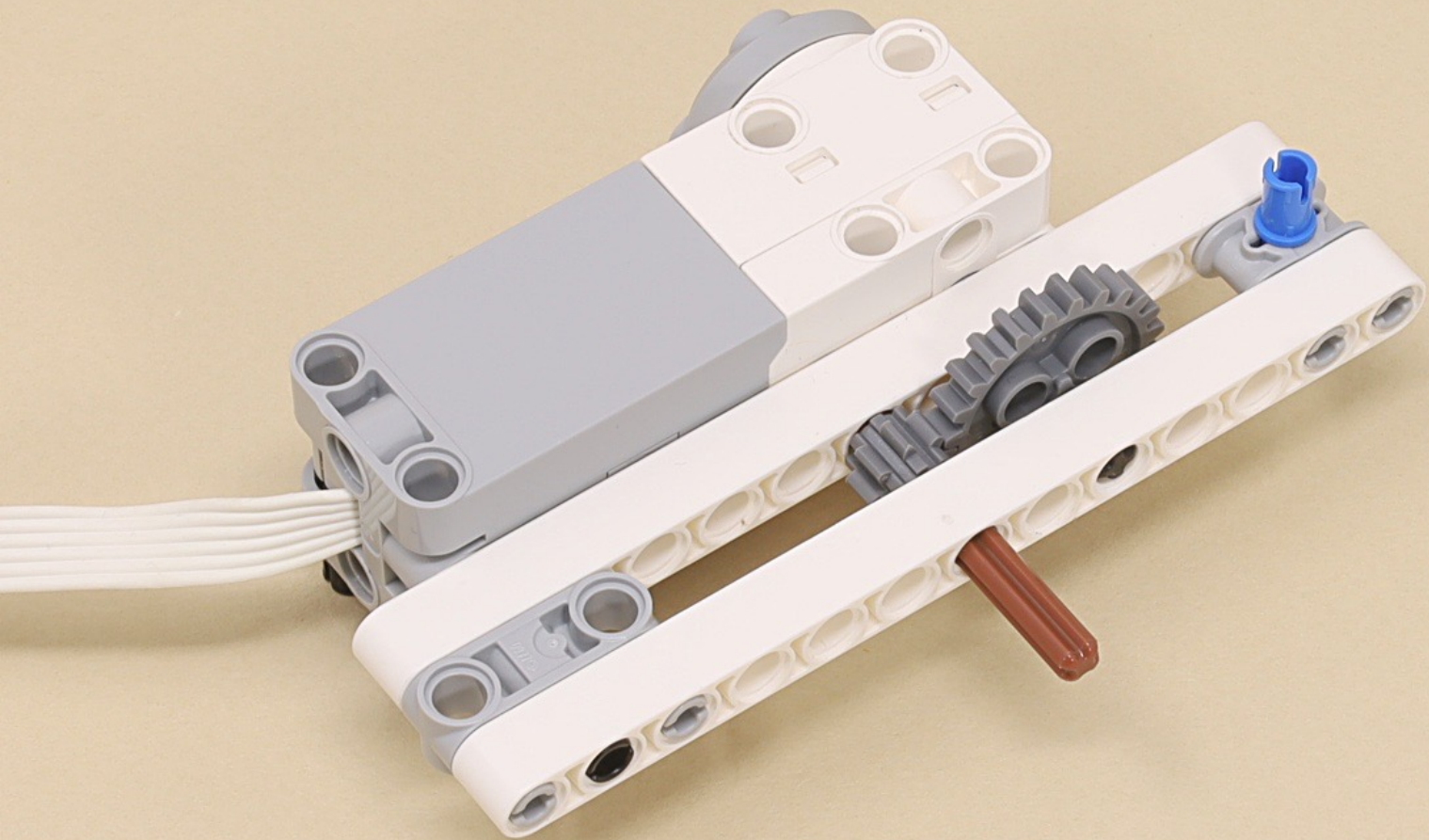










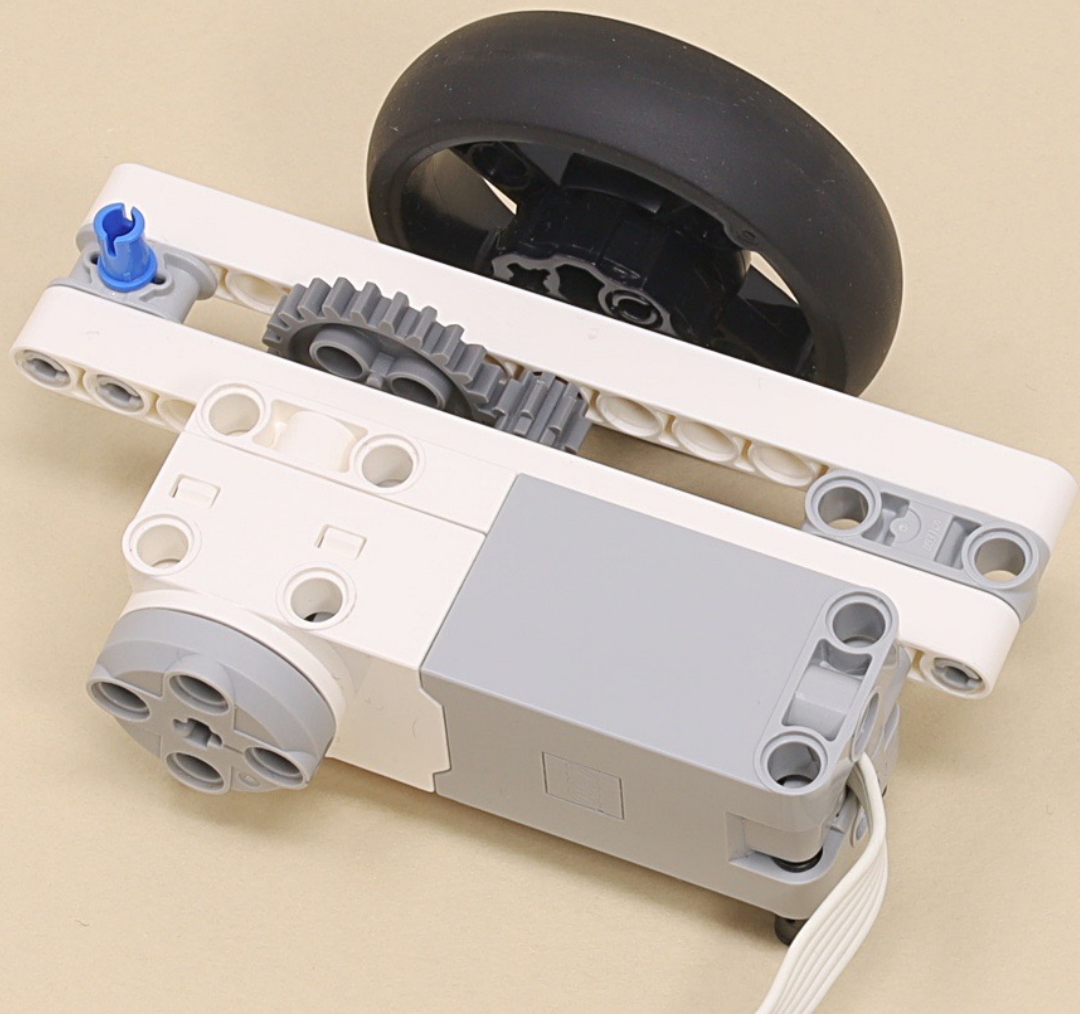


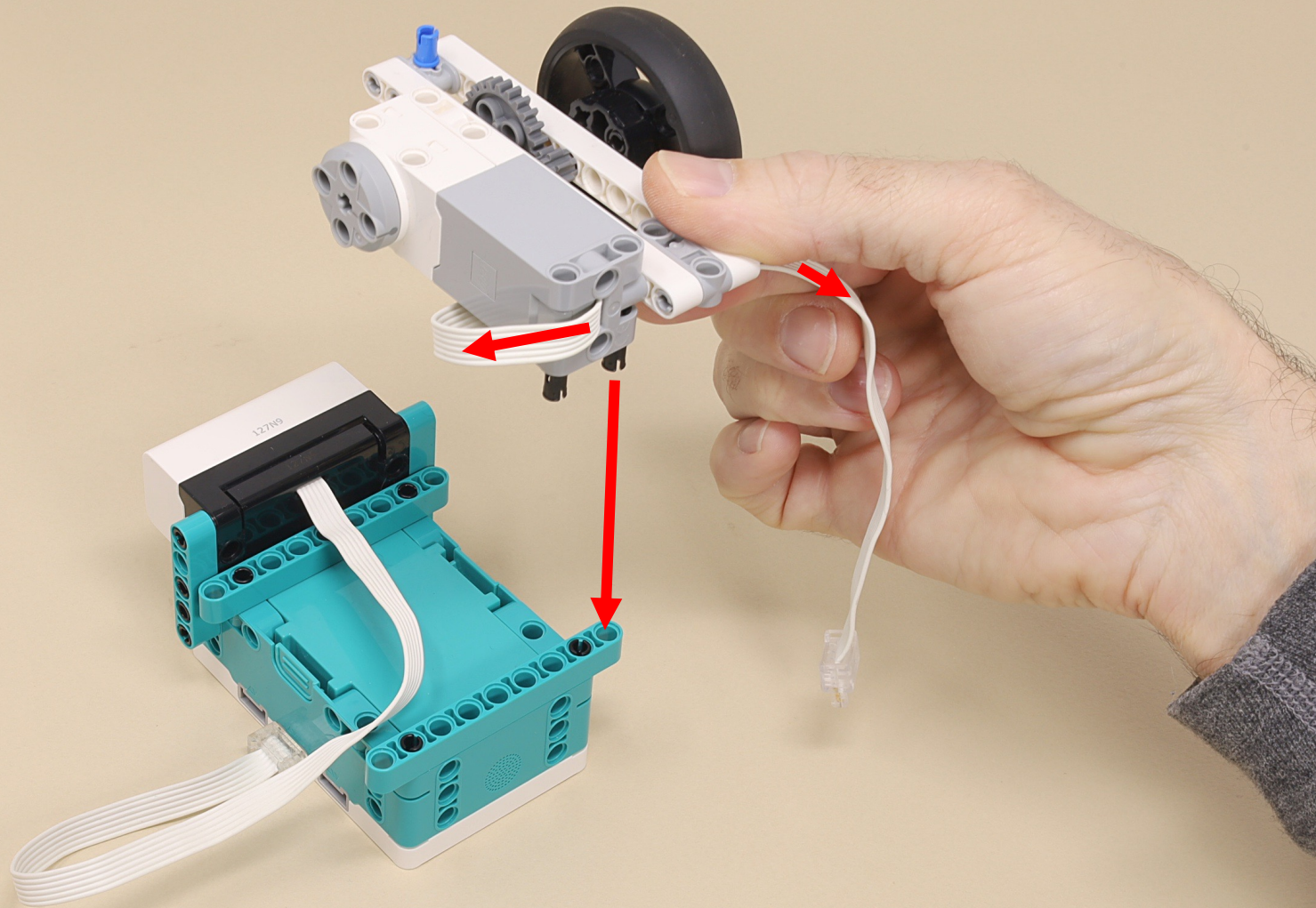




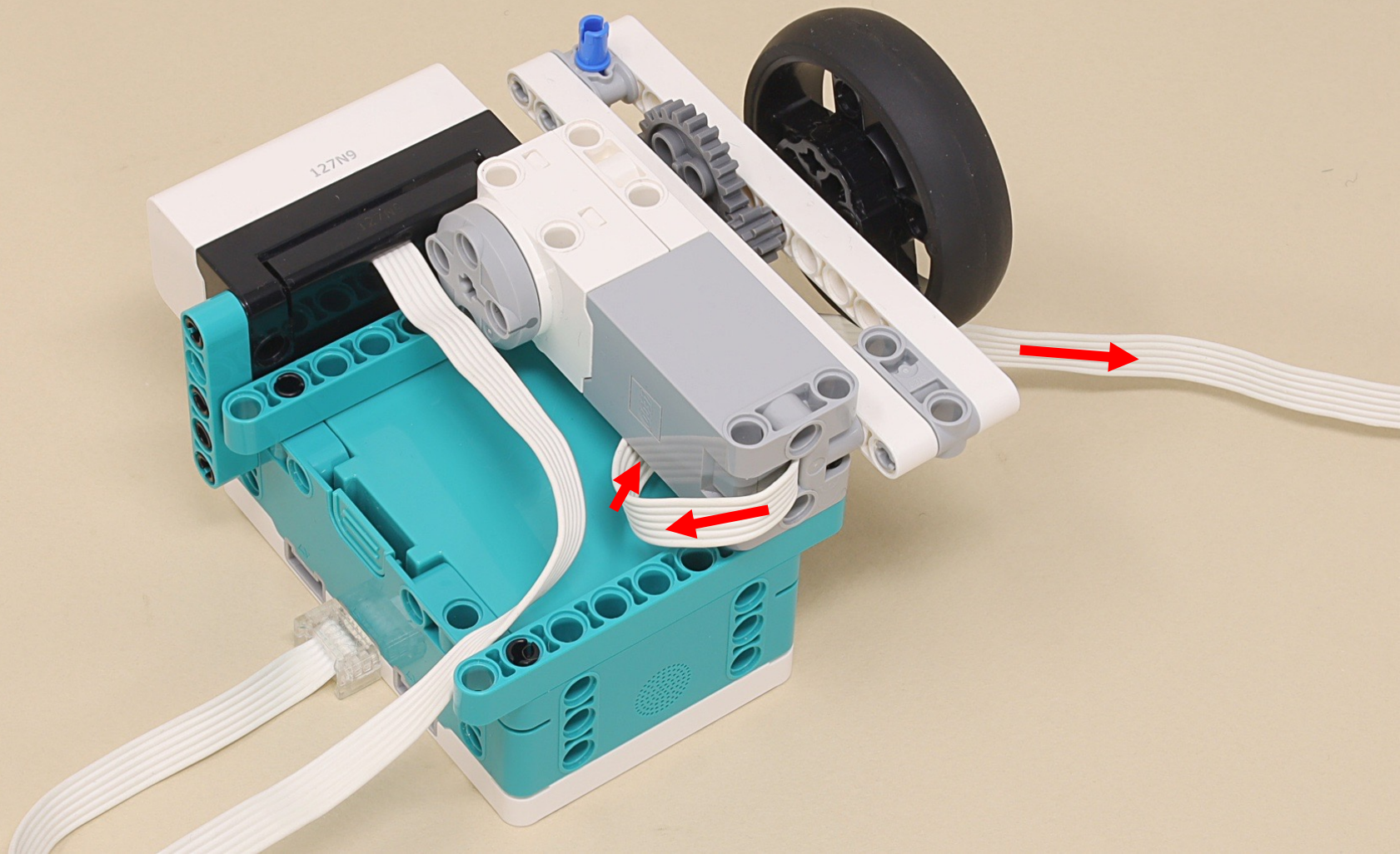
















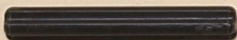
13



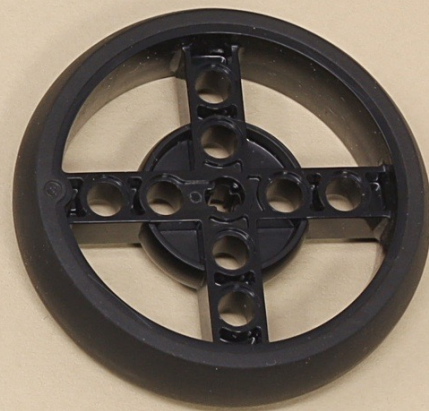
13



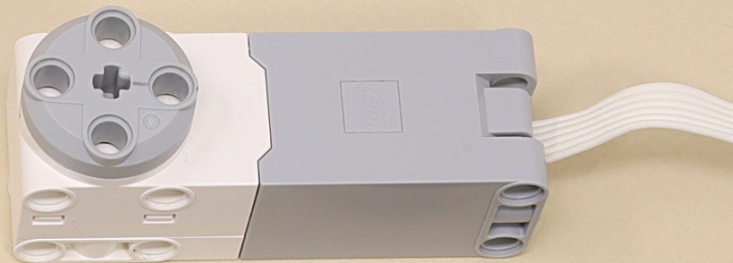
5



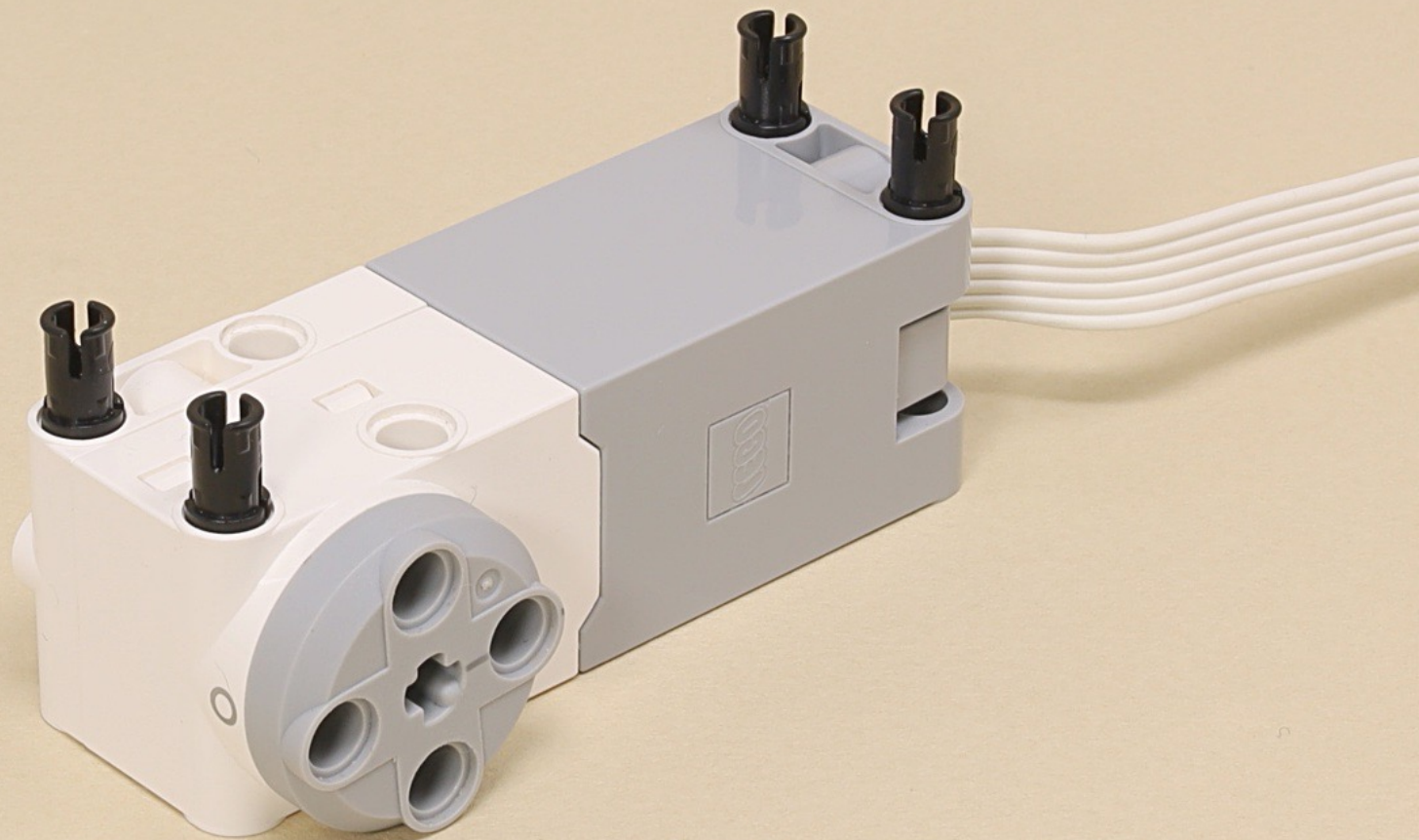
4

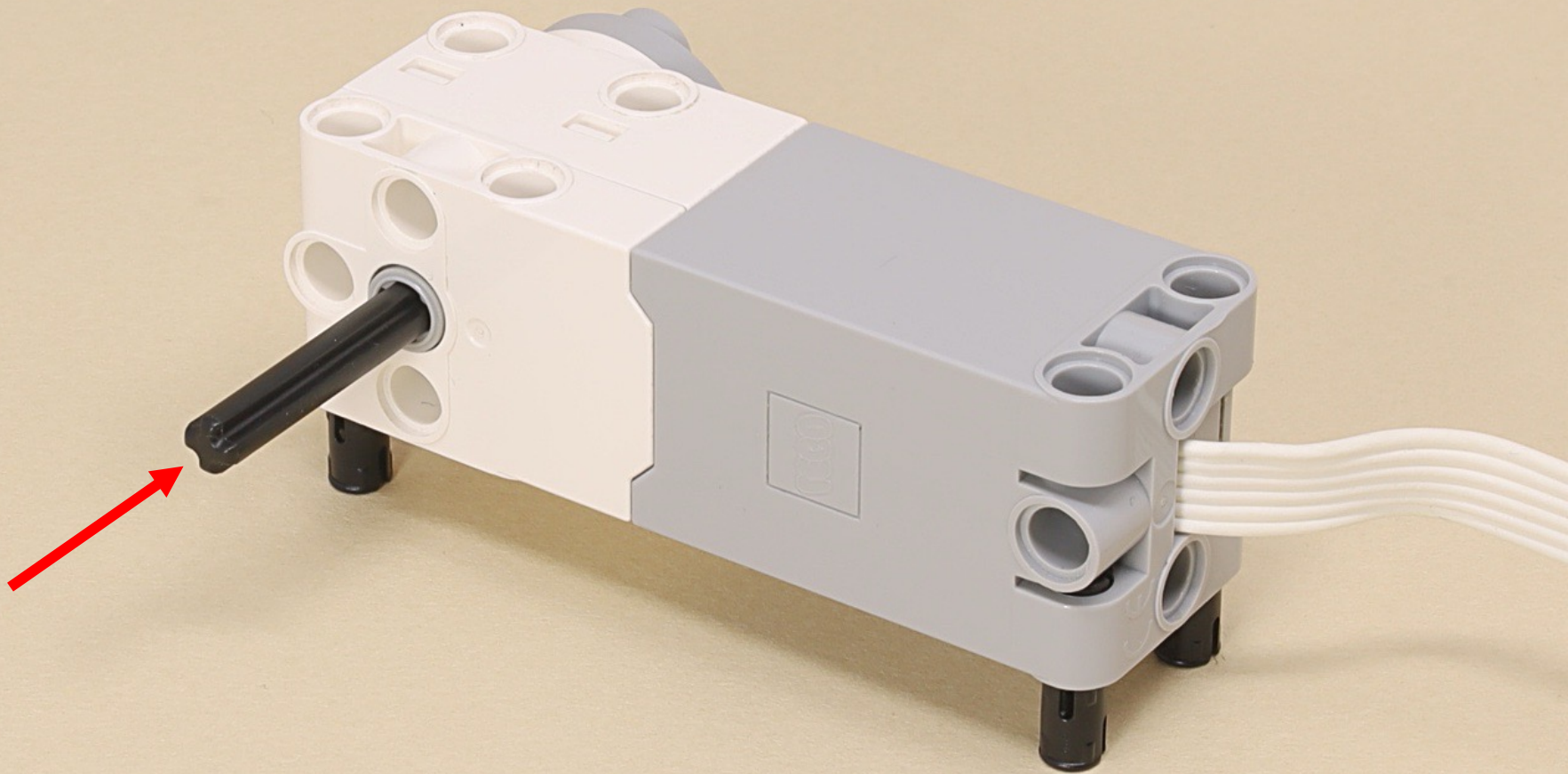


(9 x)

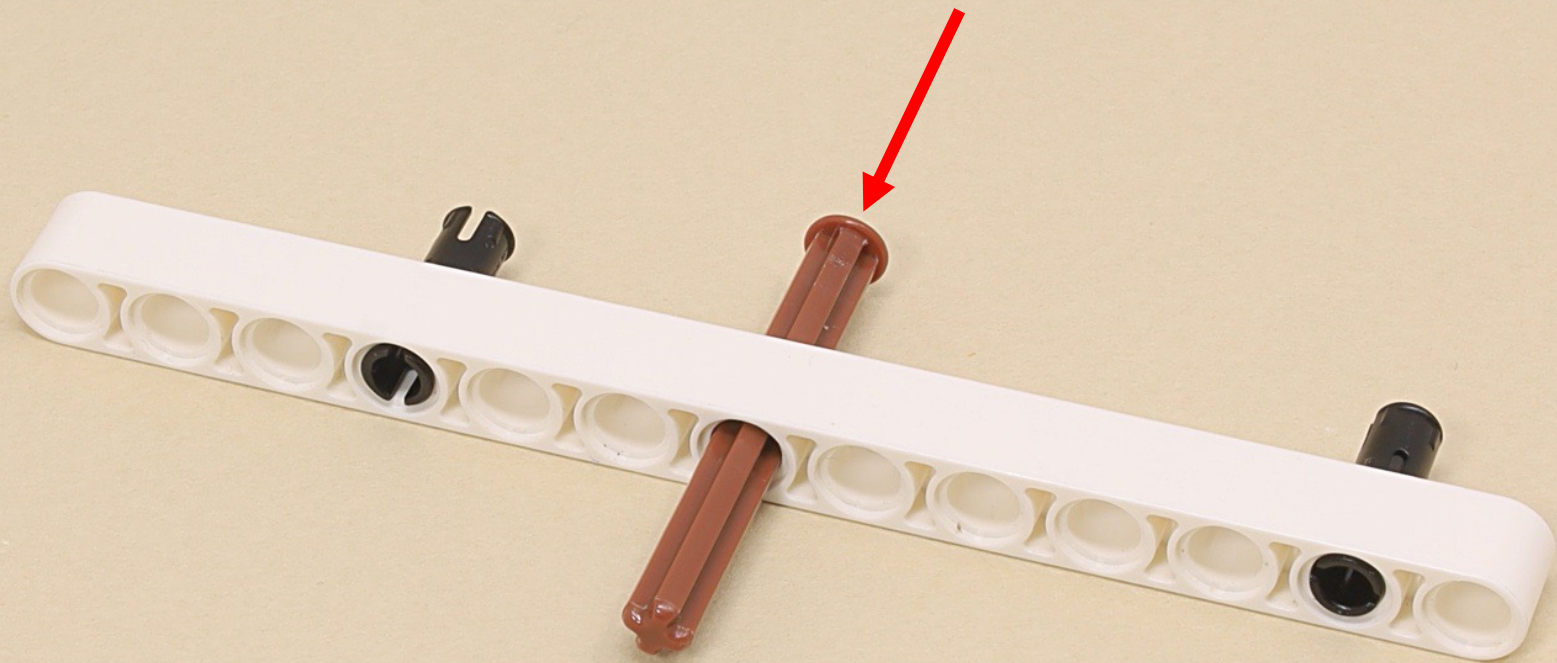


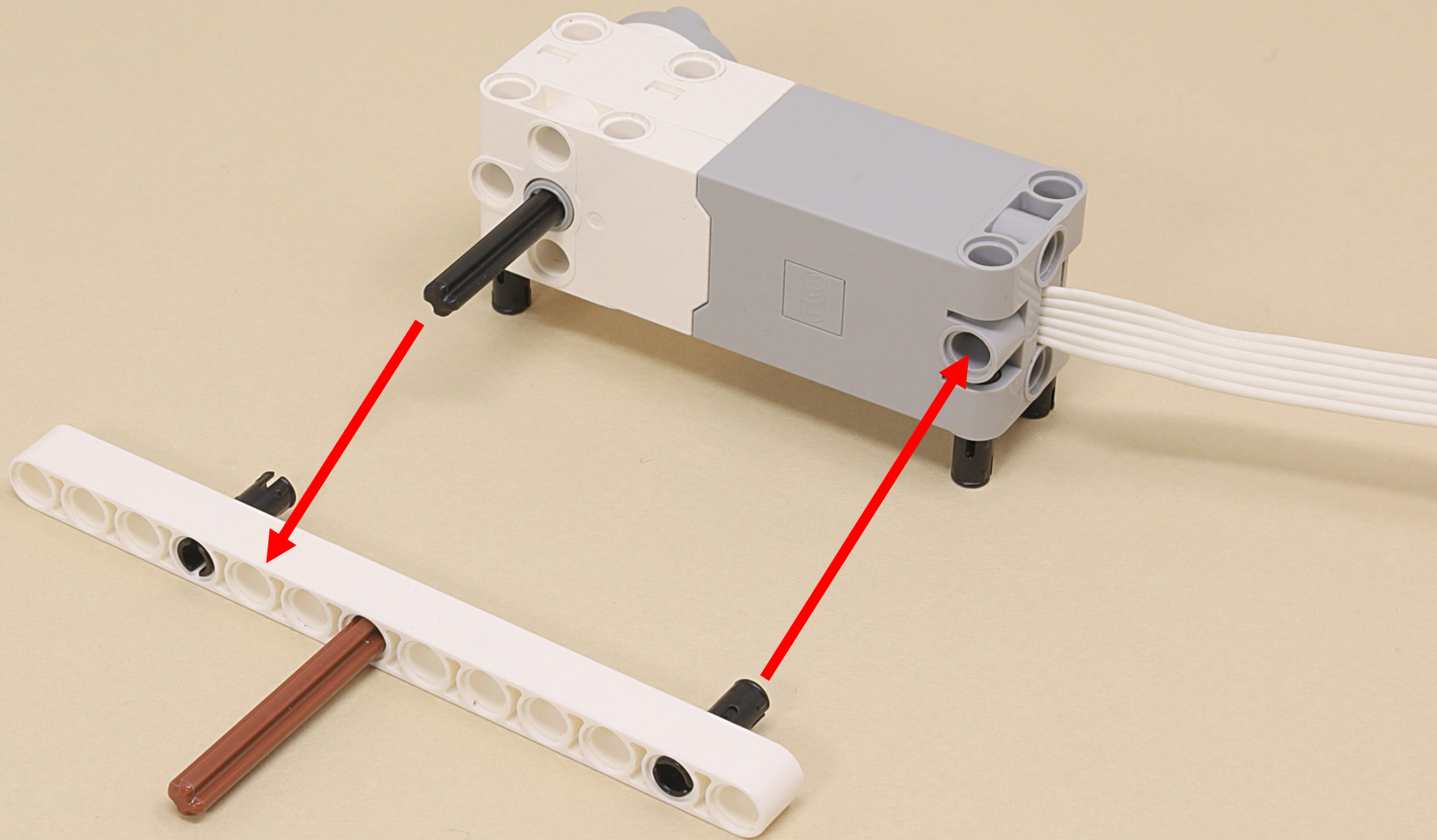




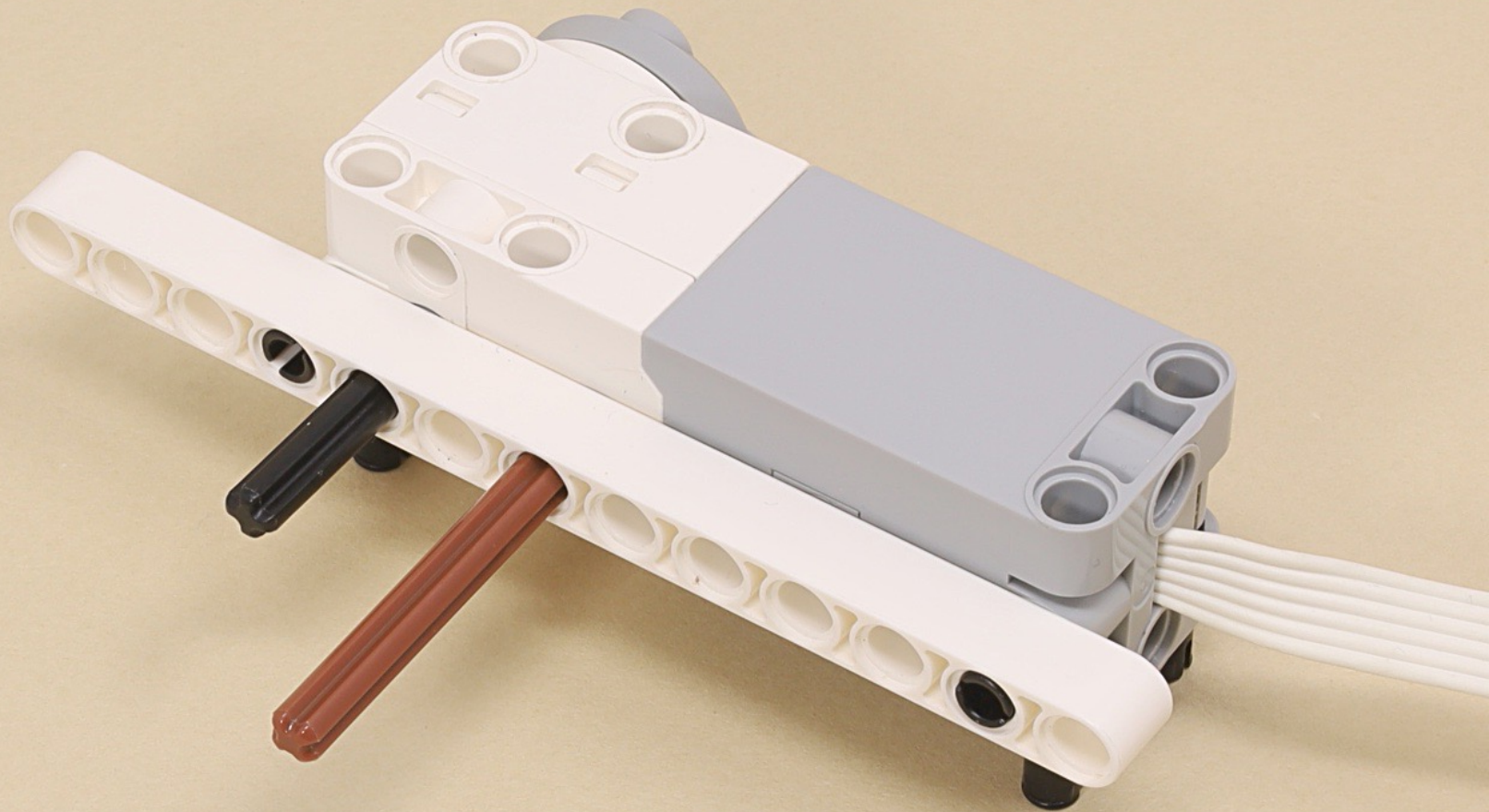


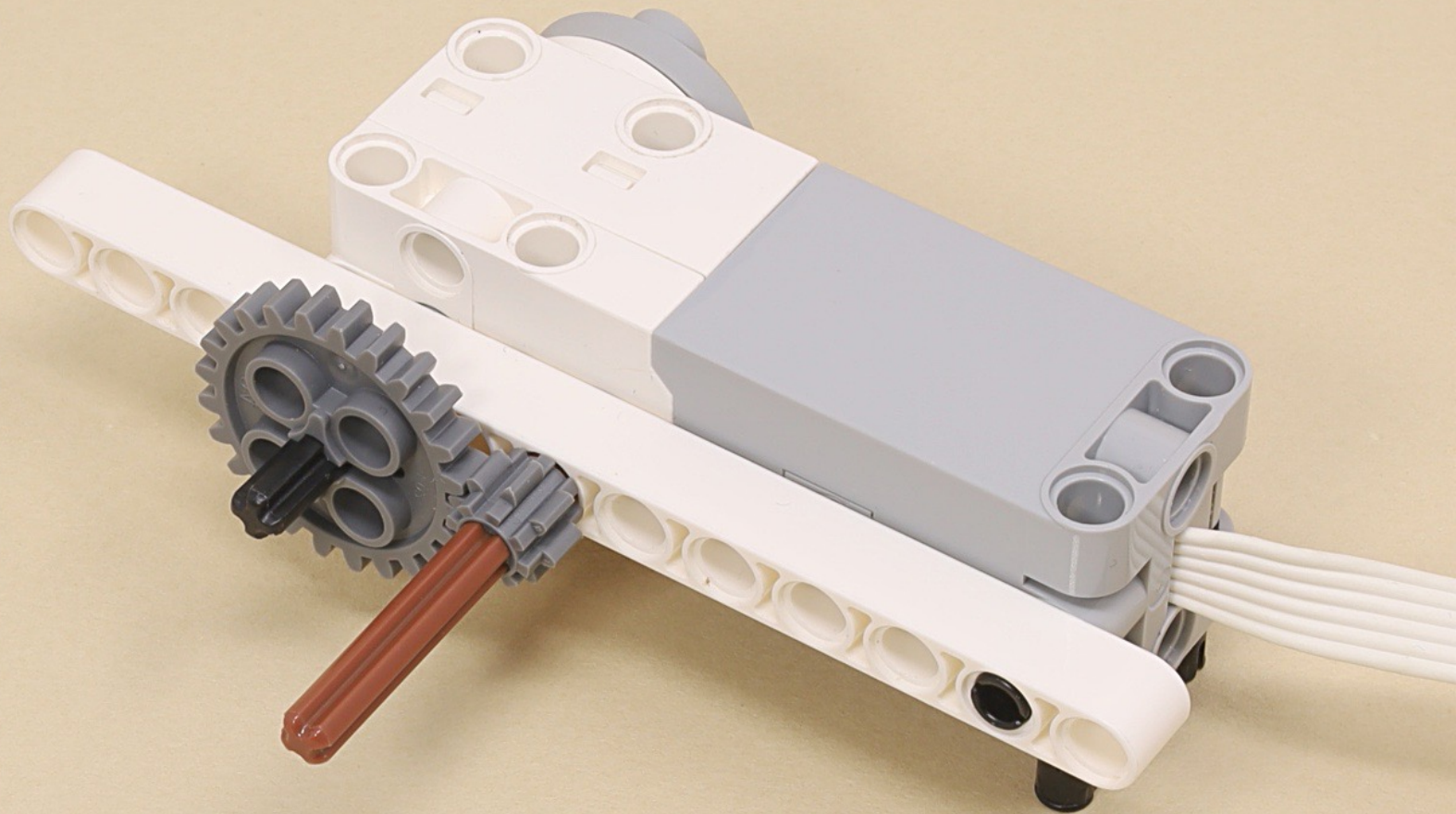




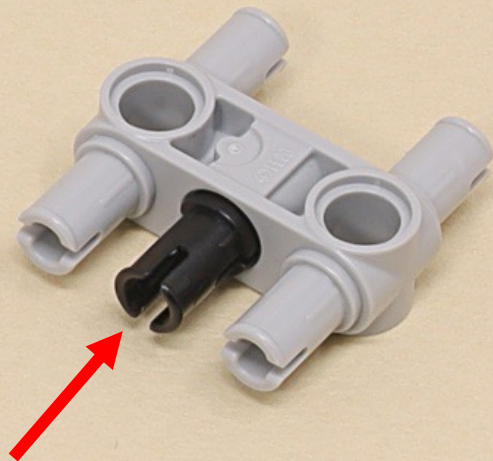
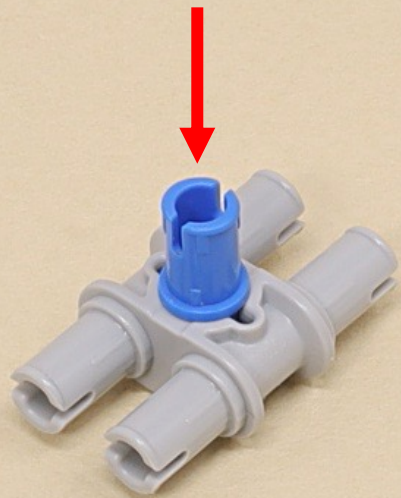


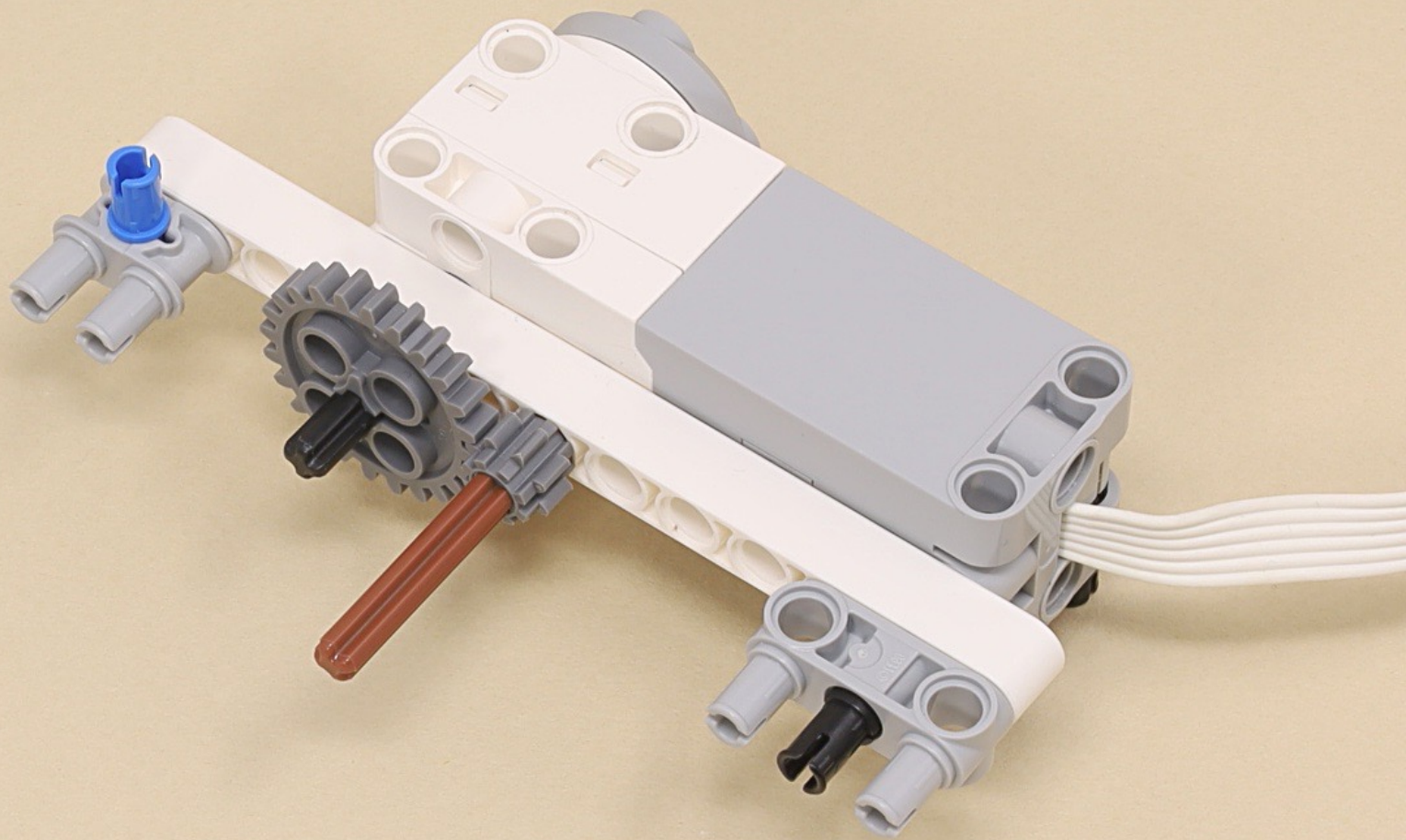












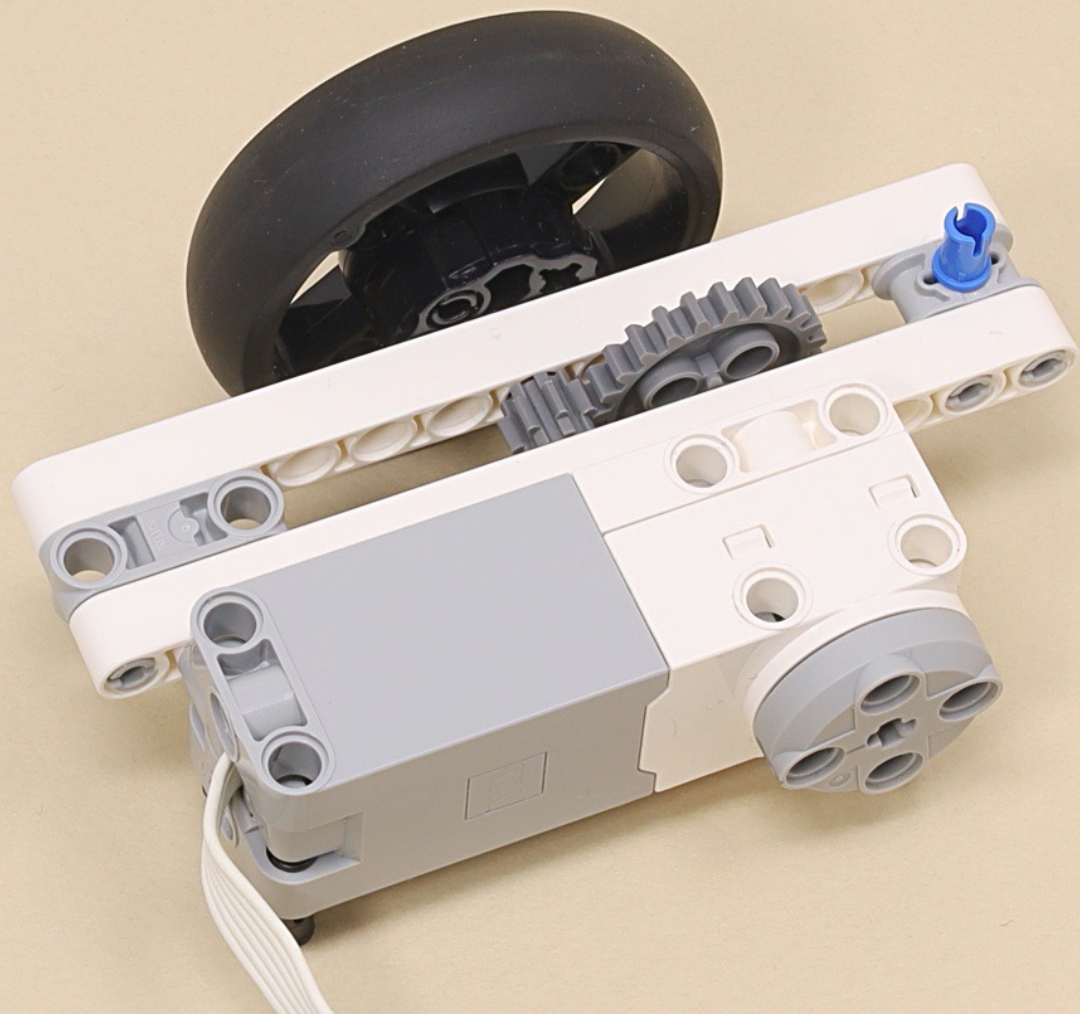




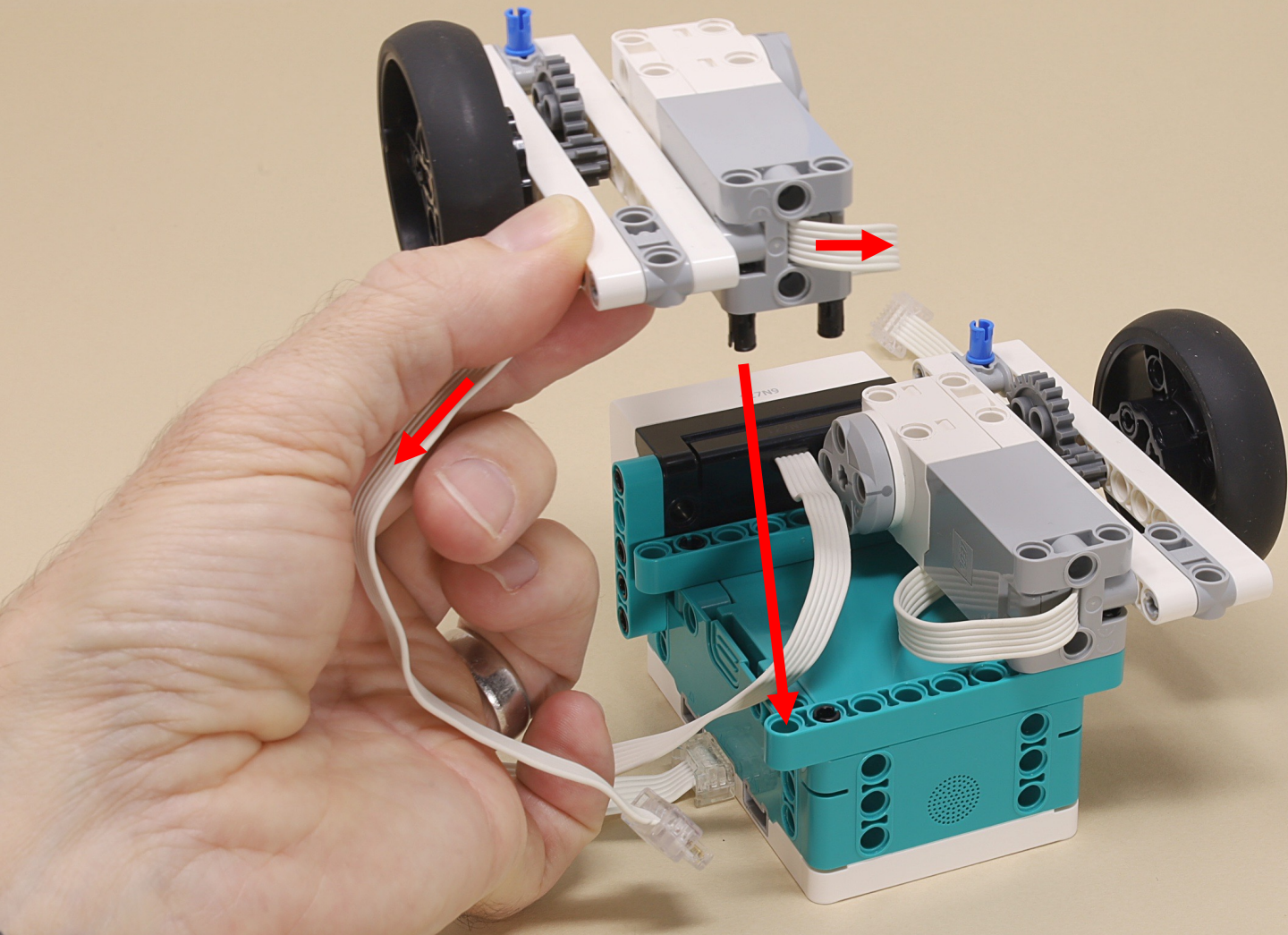


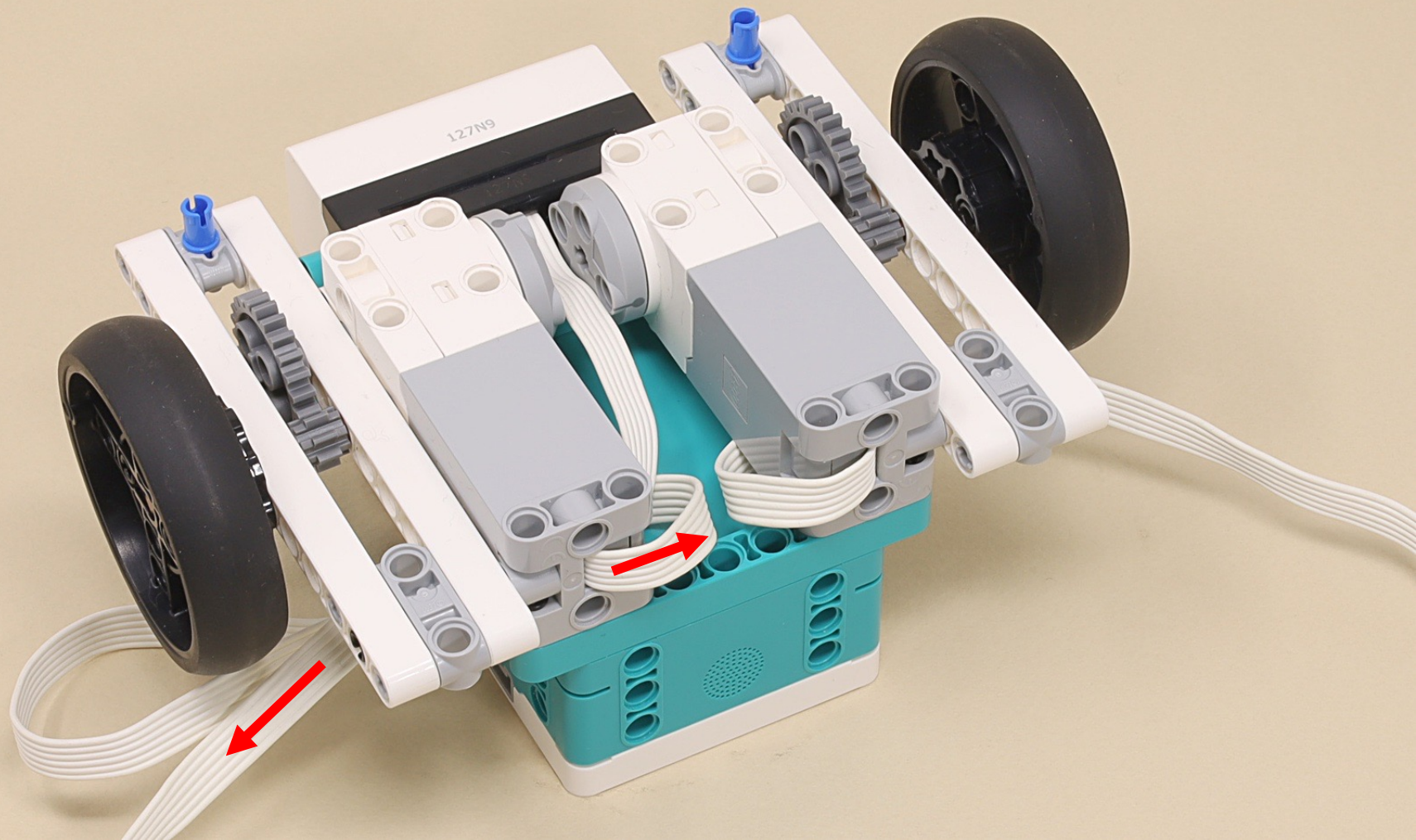








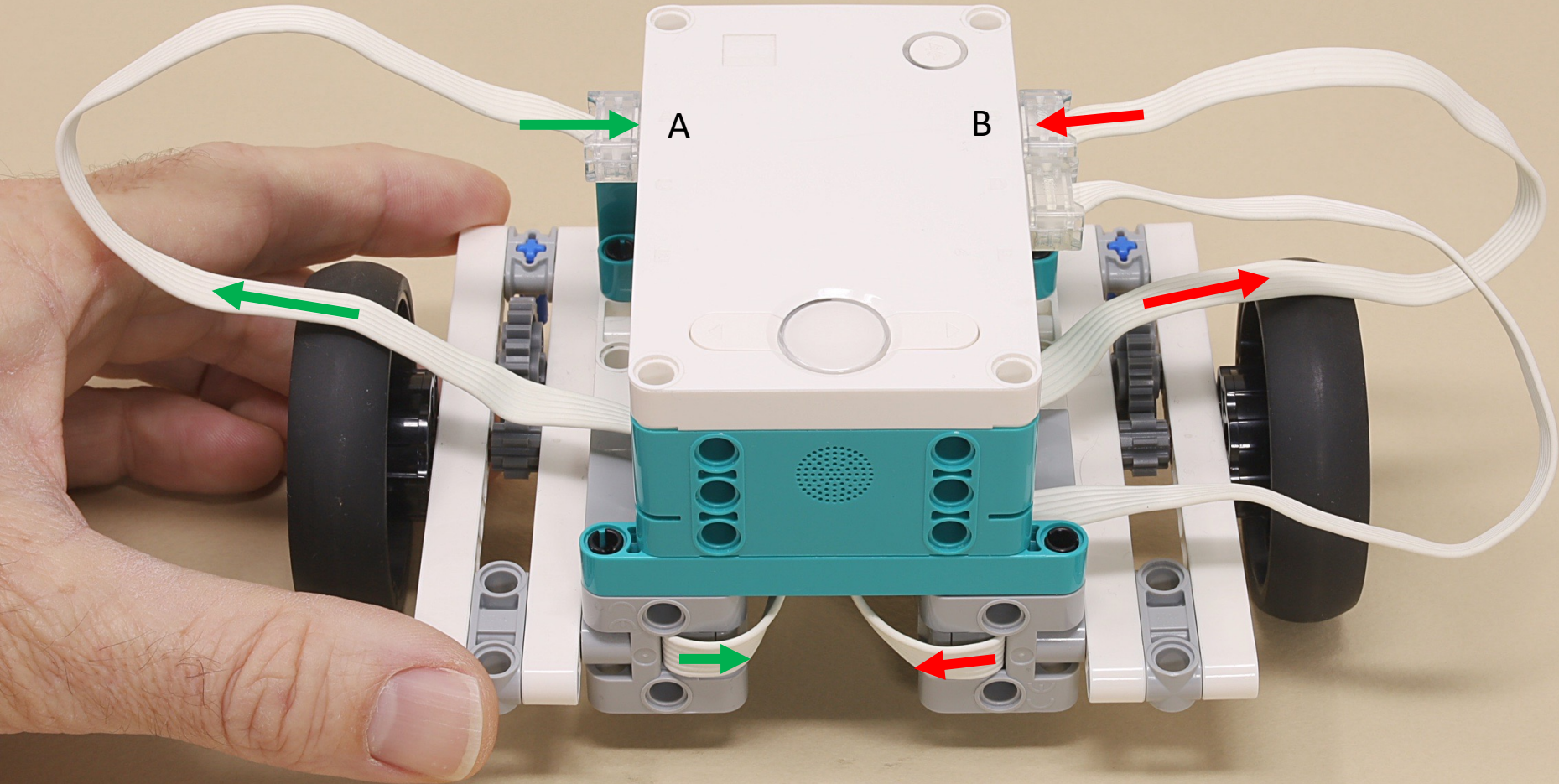




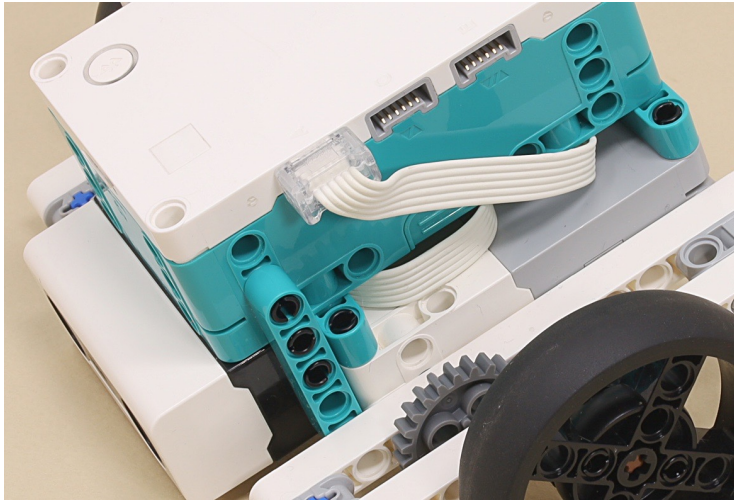
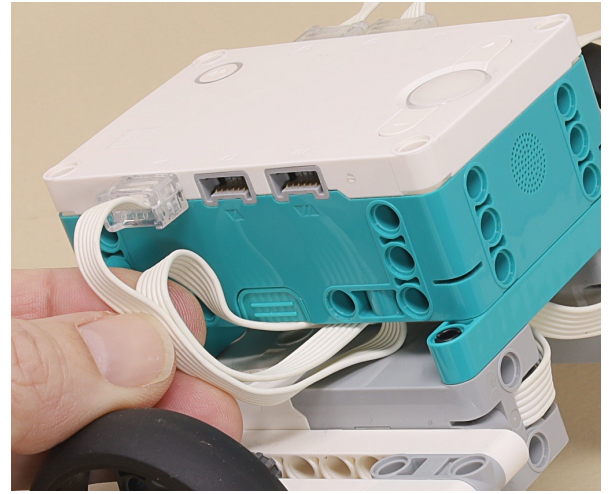
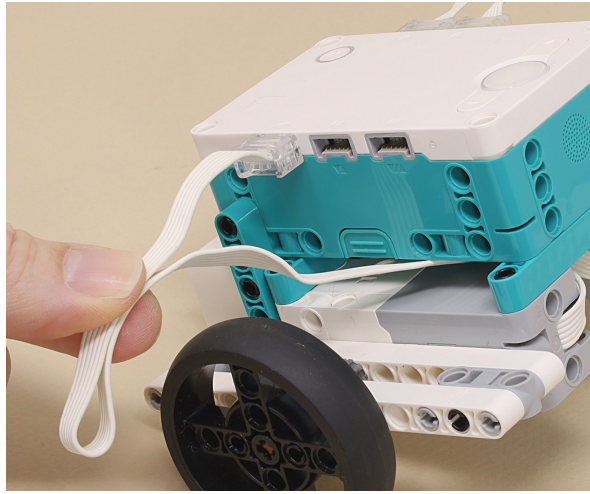


A = Left Motor

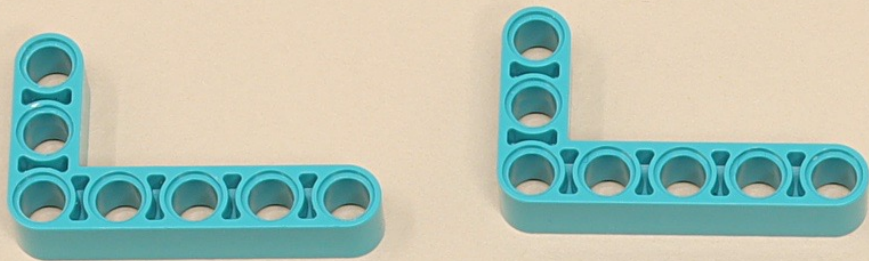
B = Right Motor



You can fold and stuff the extra wire lengths under the hub.







9

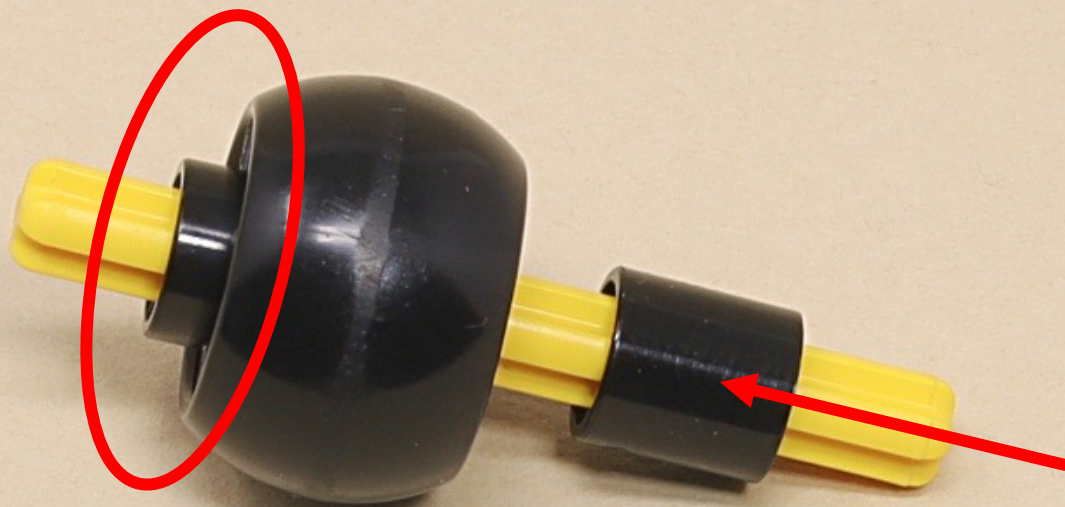


5

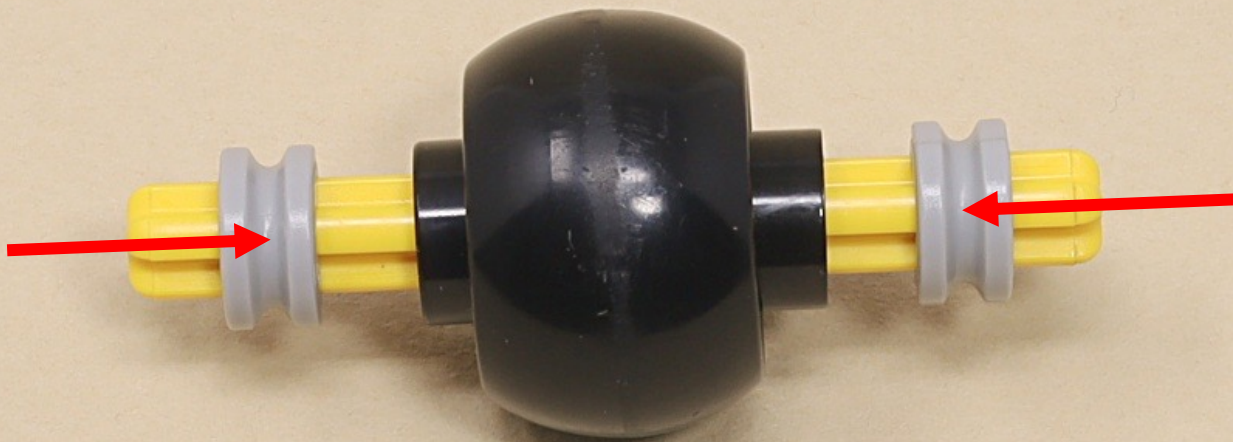


(6 x)



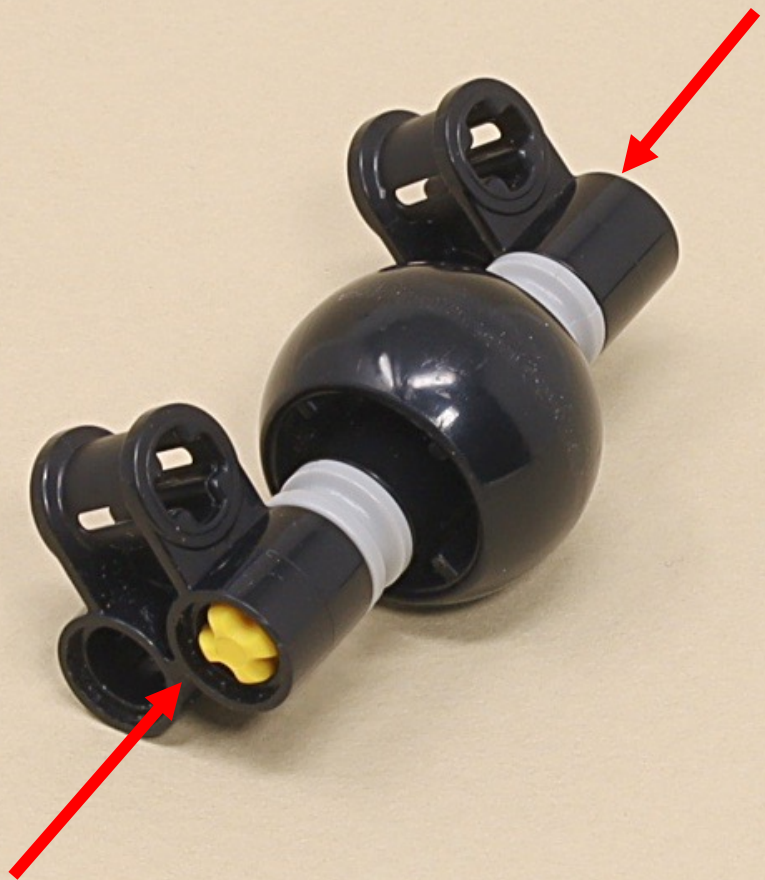


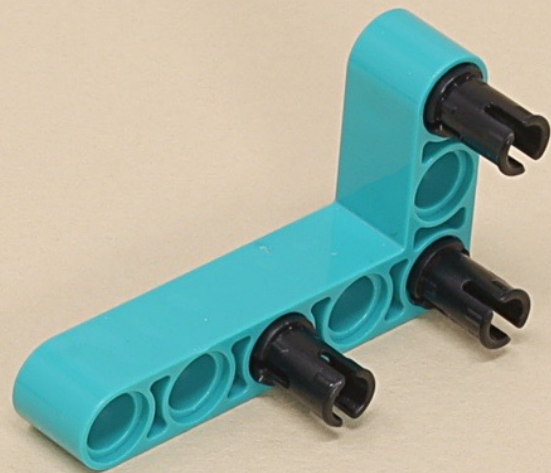
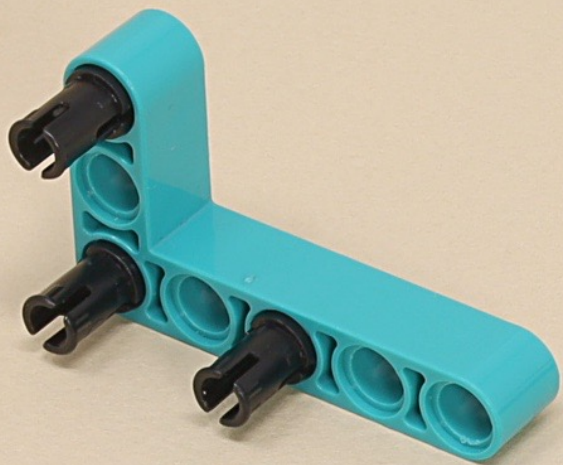




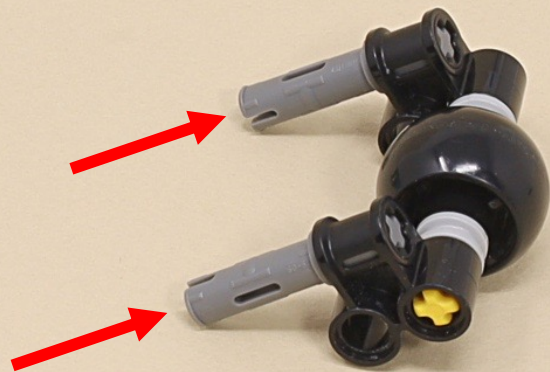
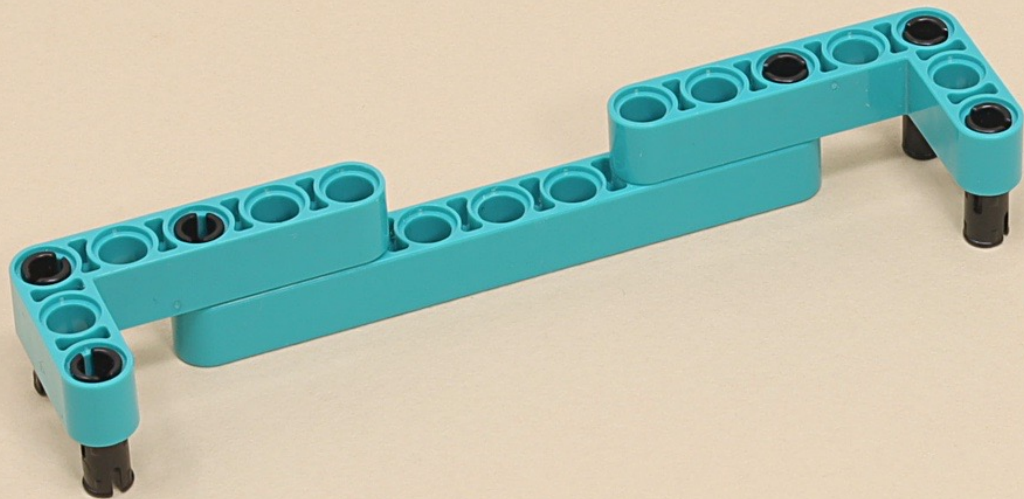


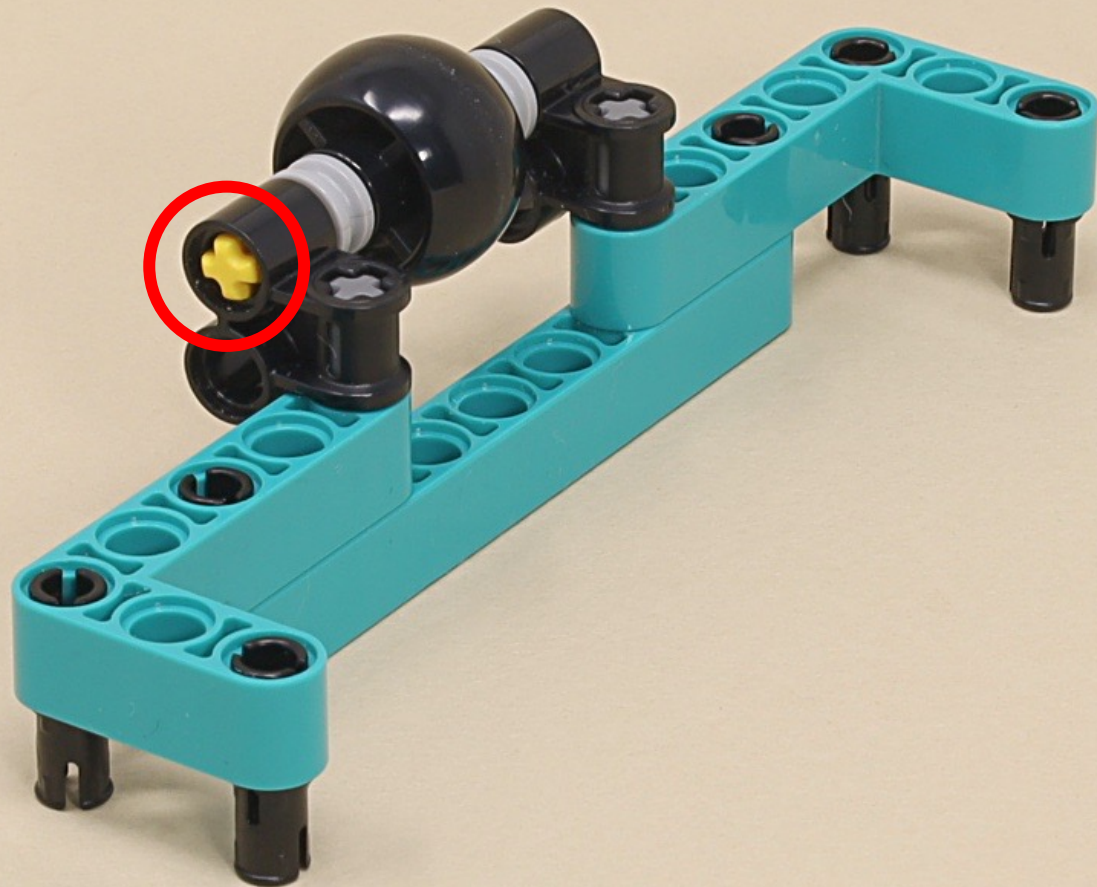




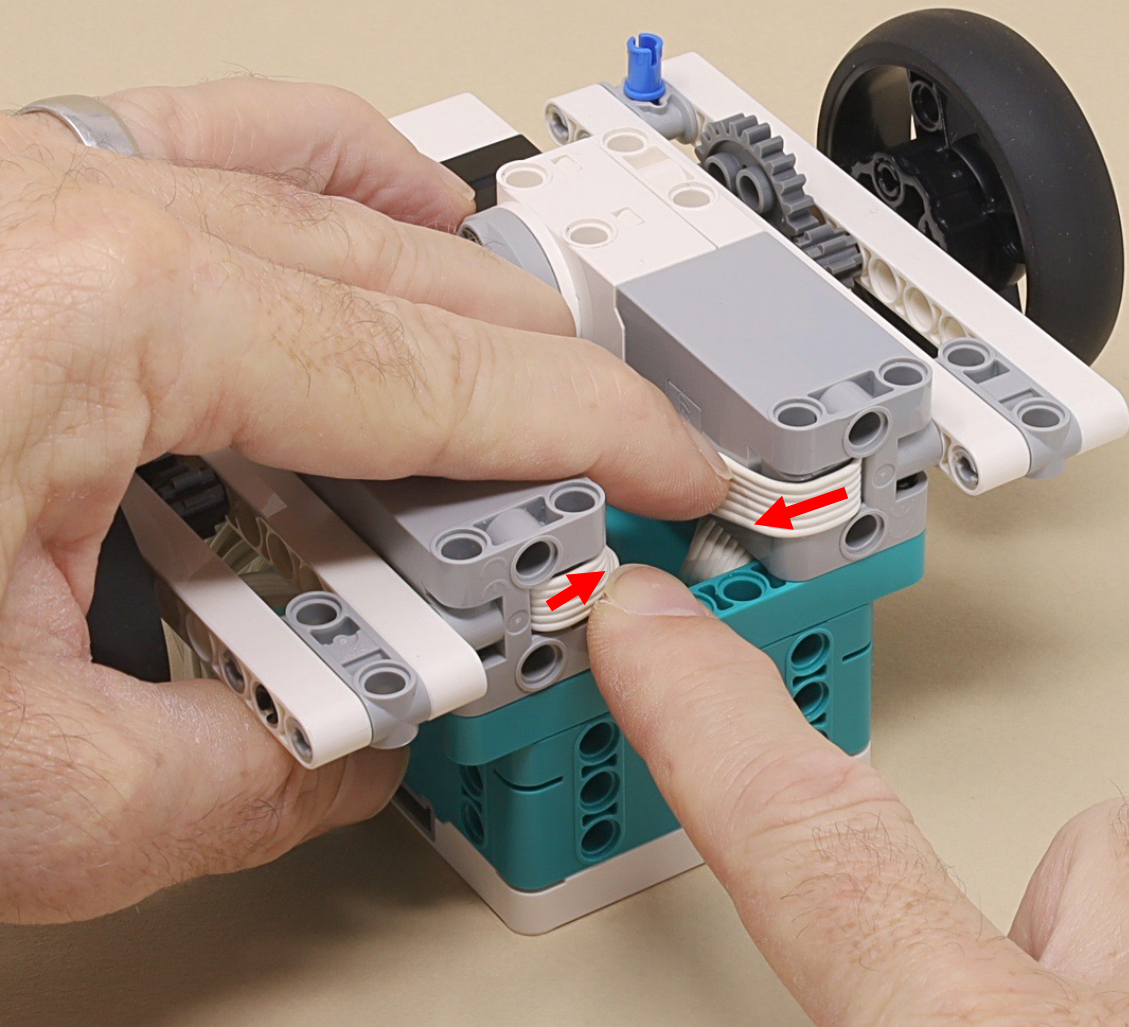




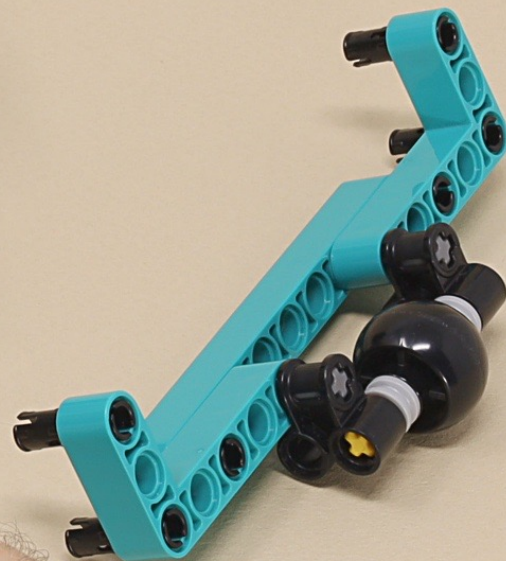


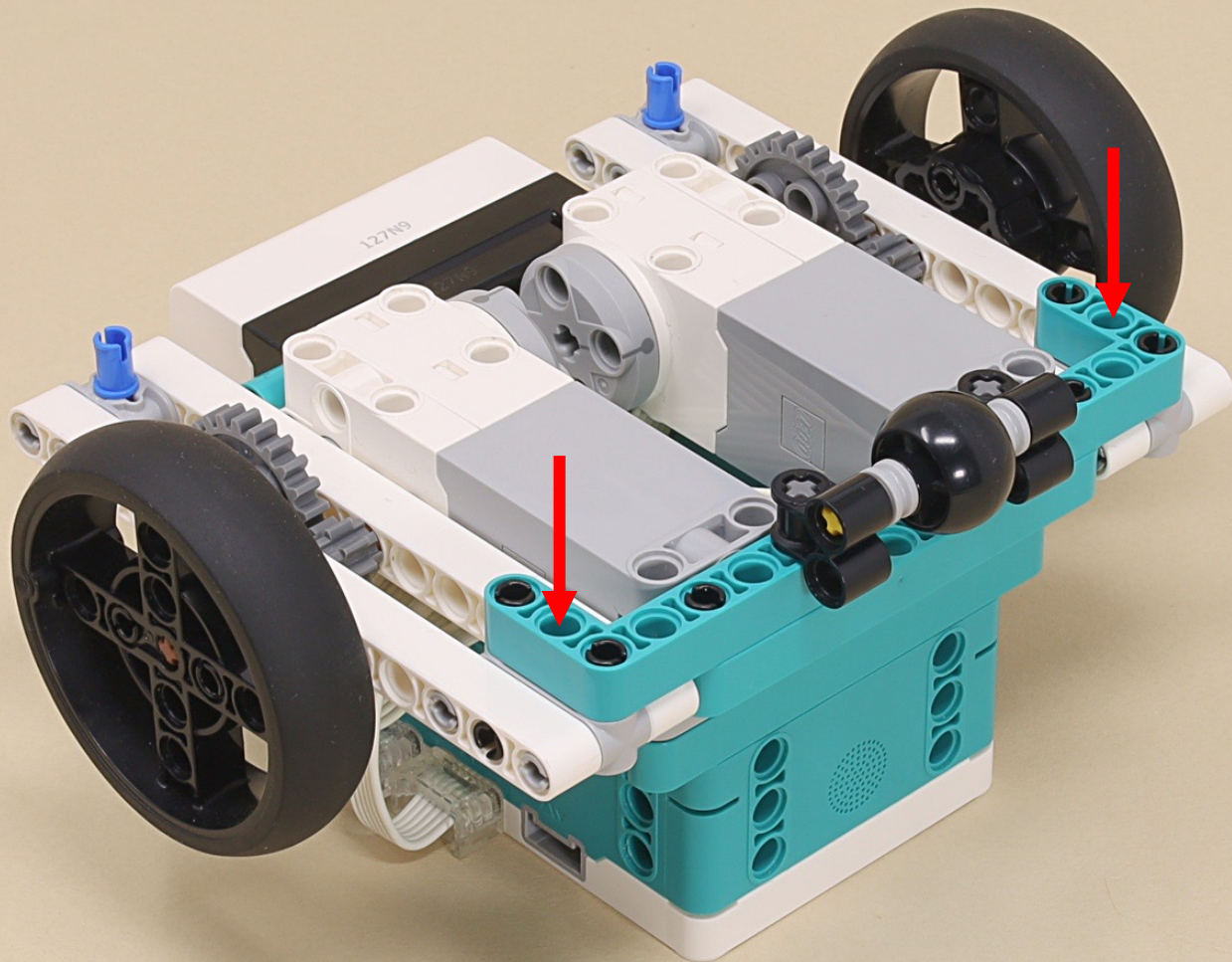






Push both motor wires  
all the way up against  
the motors.









13



4



3



3

