

# Mini Skid Steer

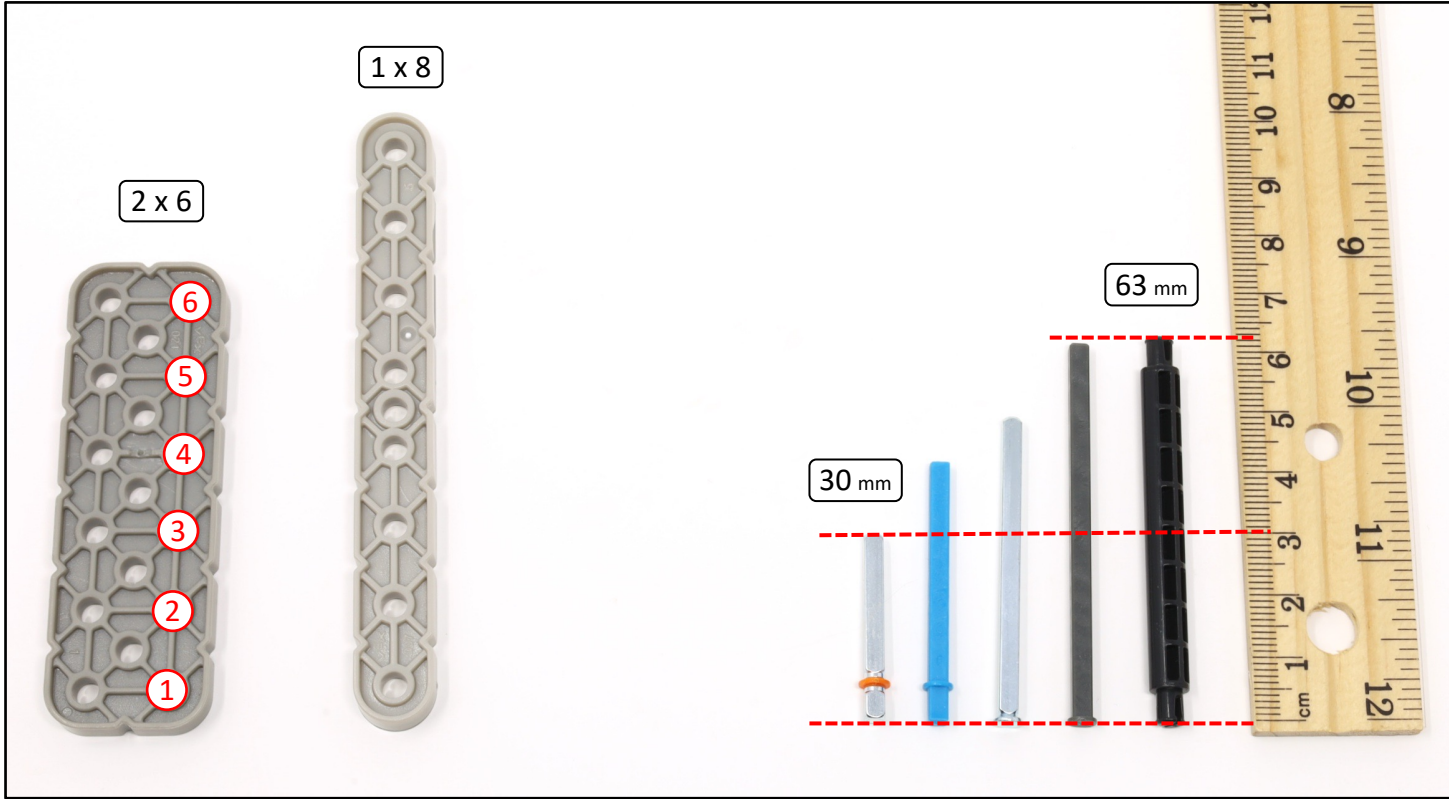


**IQ** 2<sup>nd</sup> gen

Scroll for  
building  
instructions

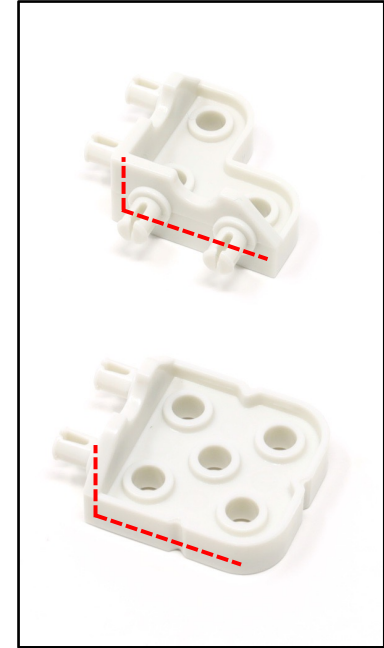


# Parts Sizing Guide



Count holes on beams

Use a metric ruler for axles and standoffs



Watch orientation  
of connectors



2 x 8



2 x 8



42 mm



38 mm

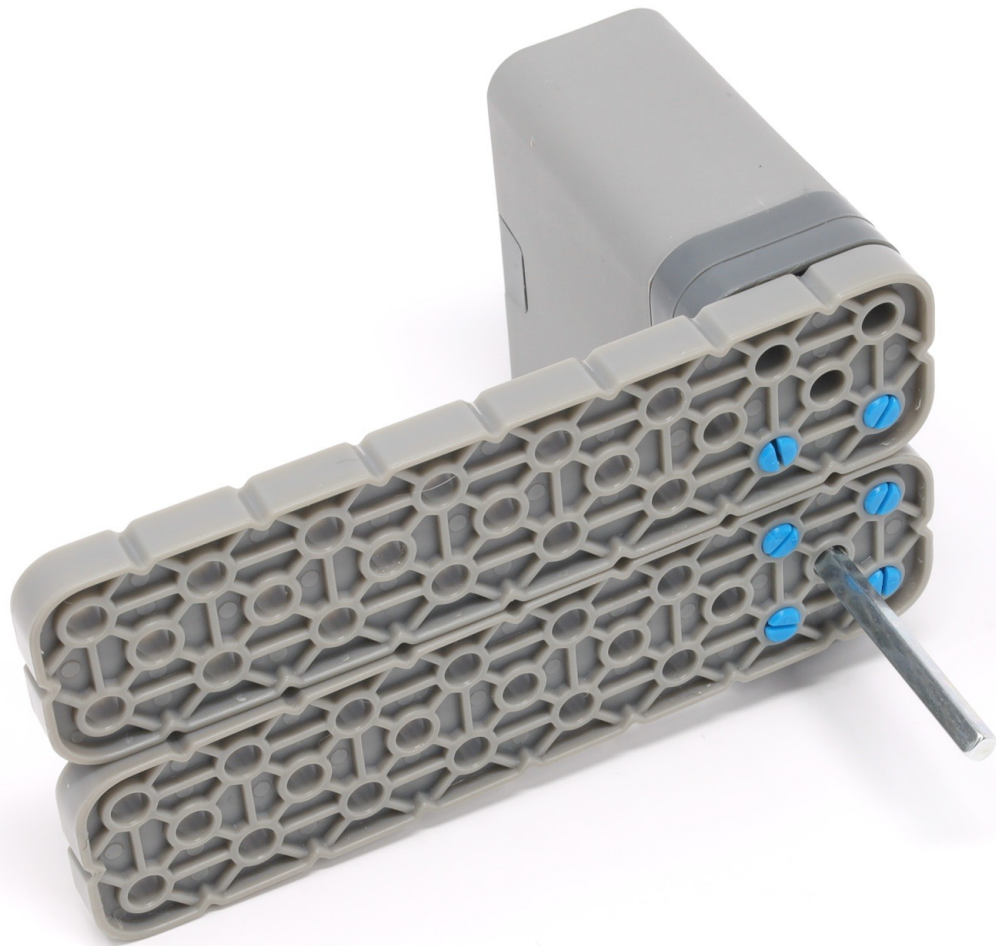


(6 x)

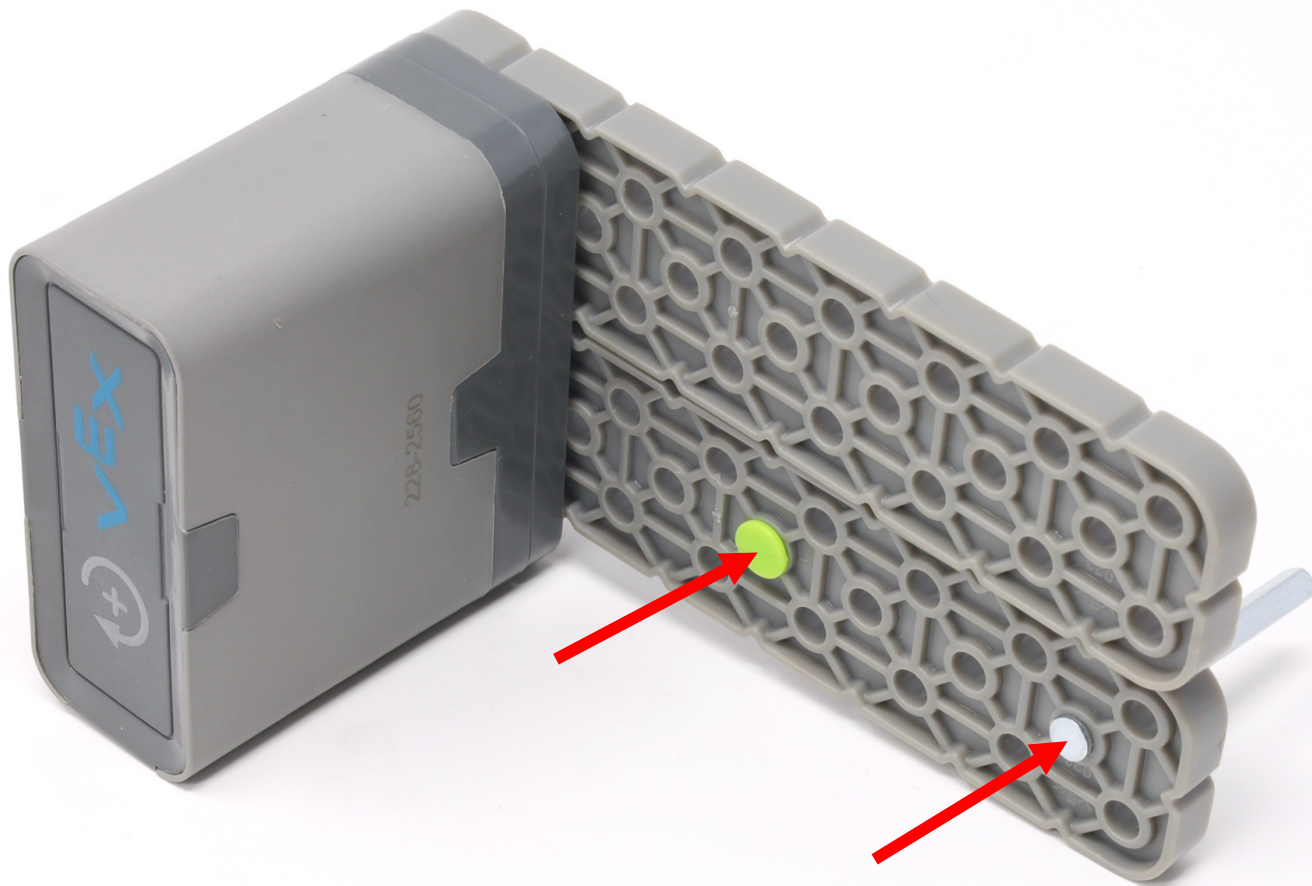


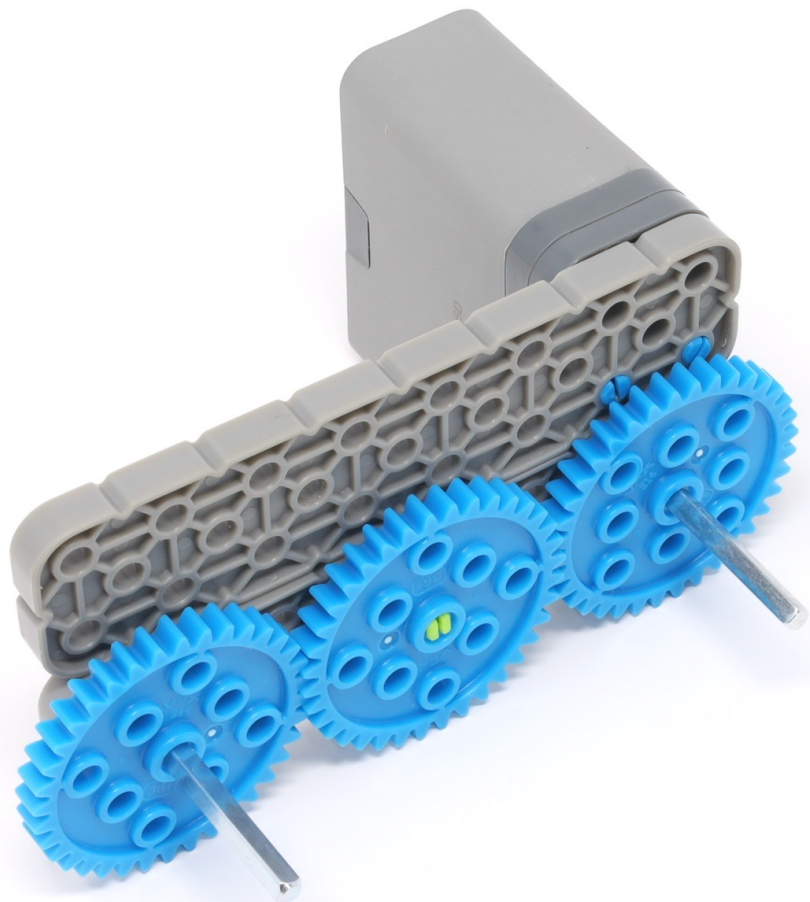










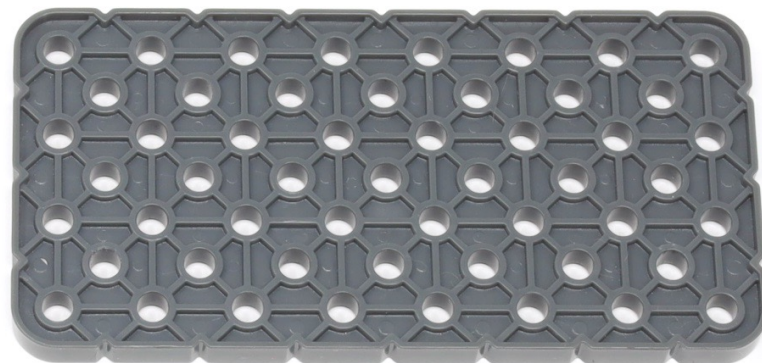




2 x 4



2 x 4



4 x 8

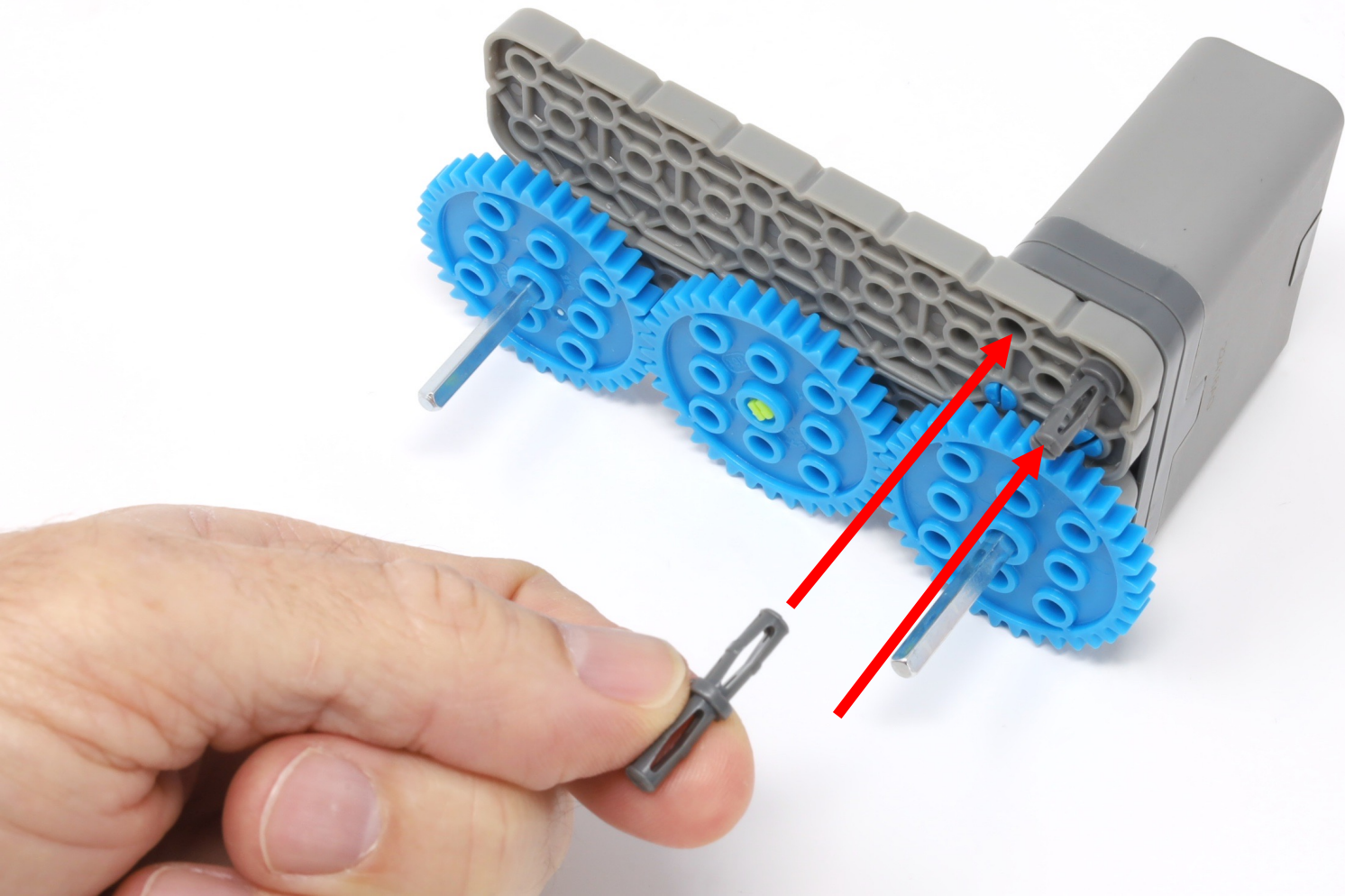


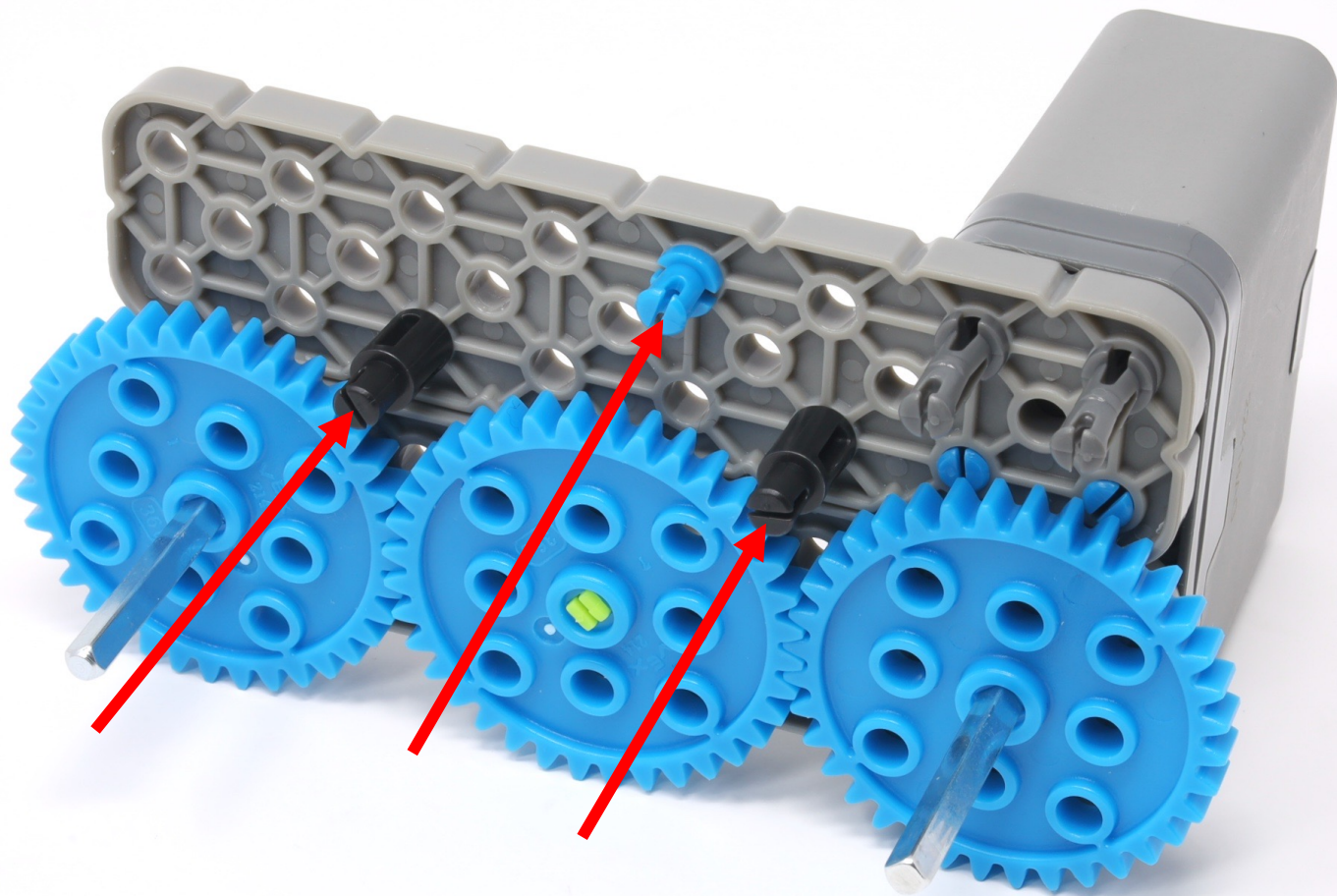
18 mm

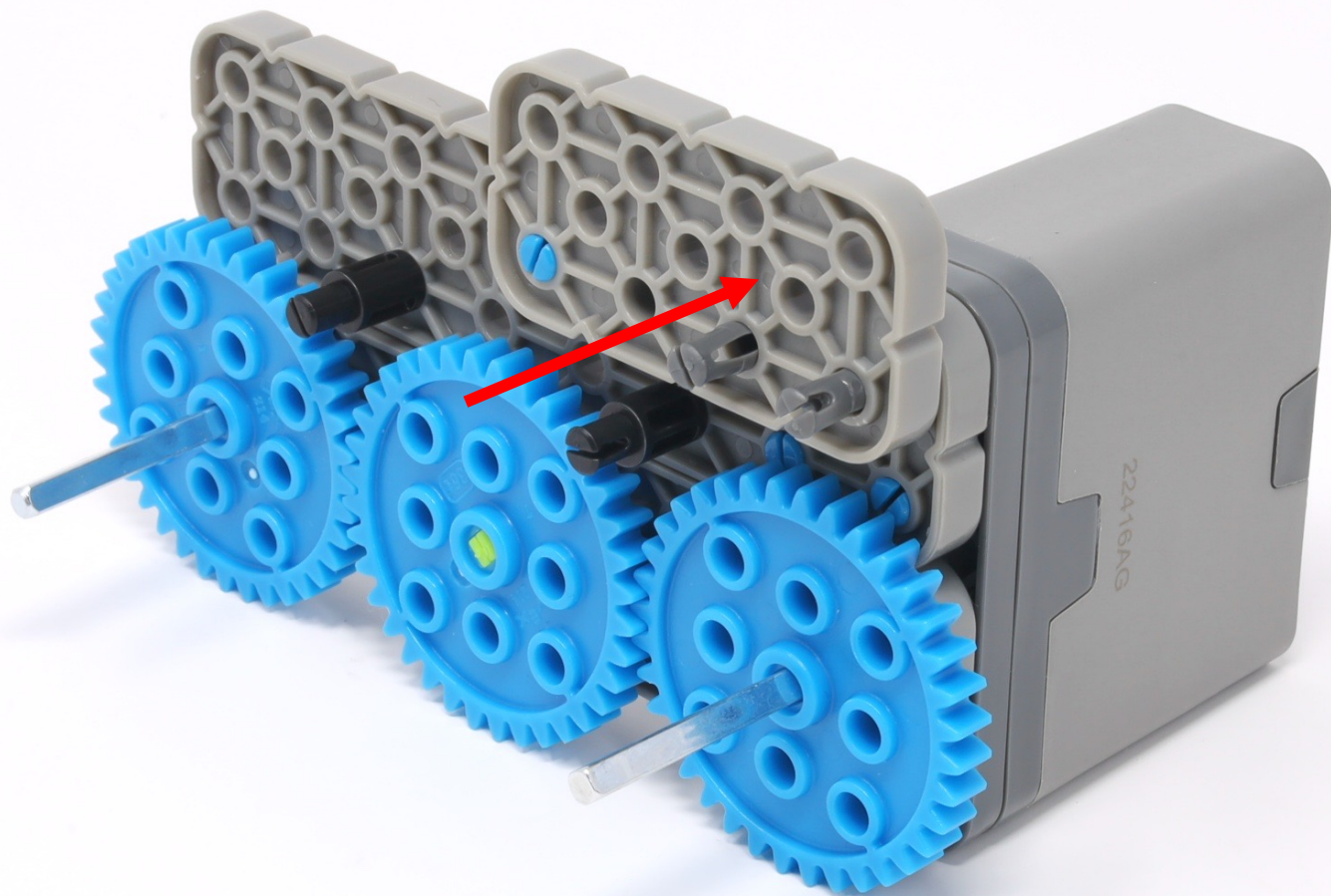


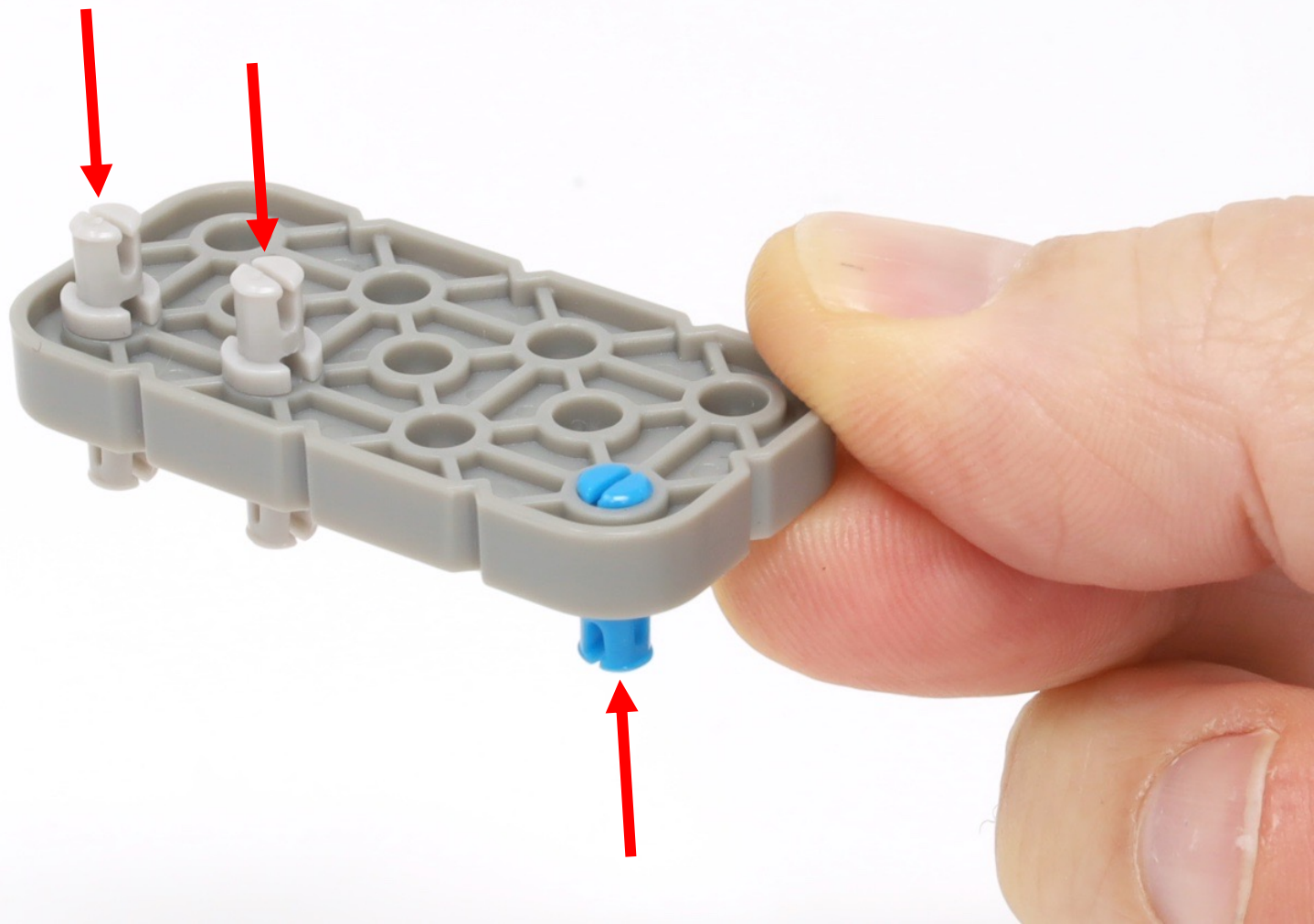
18 mm

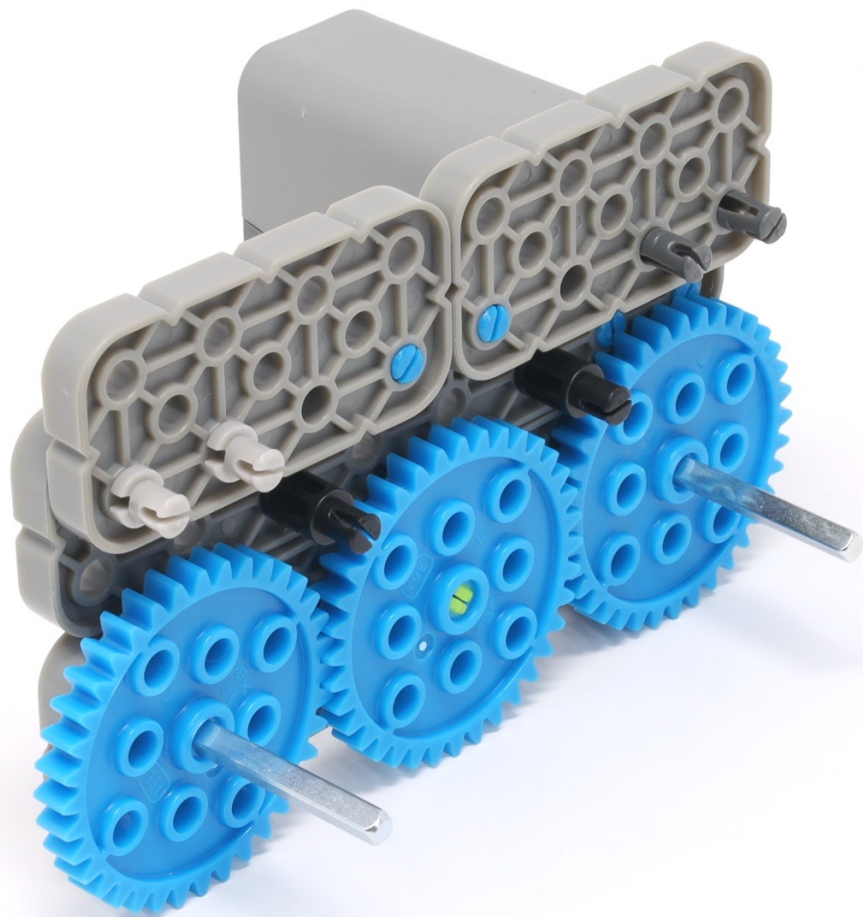


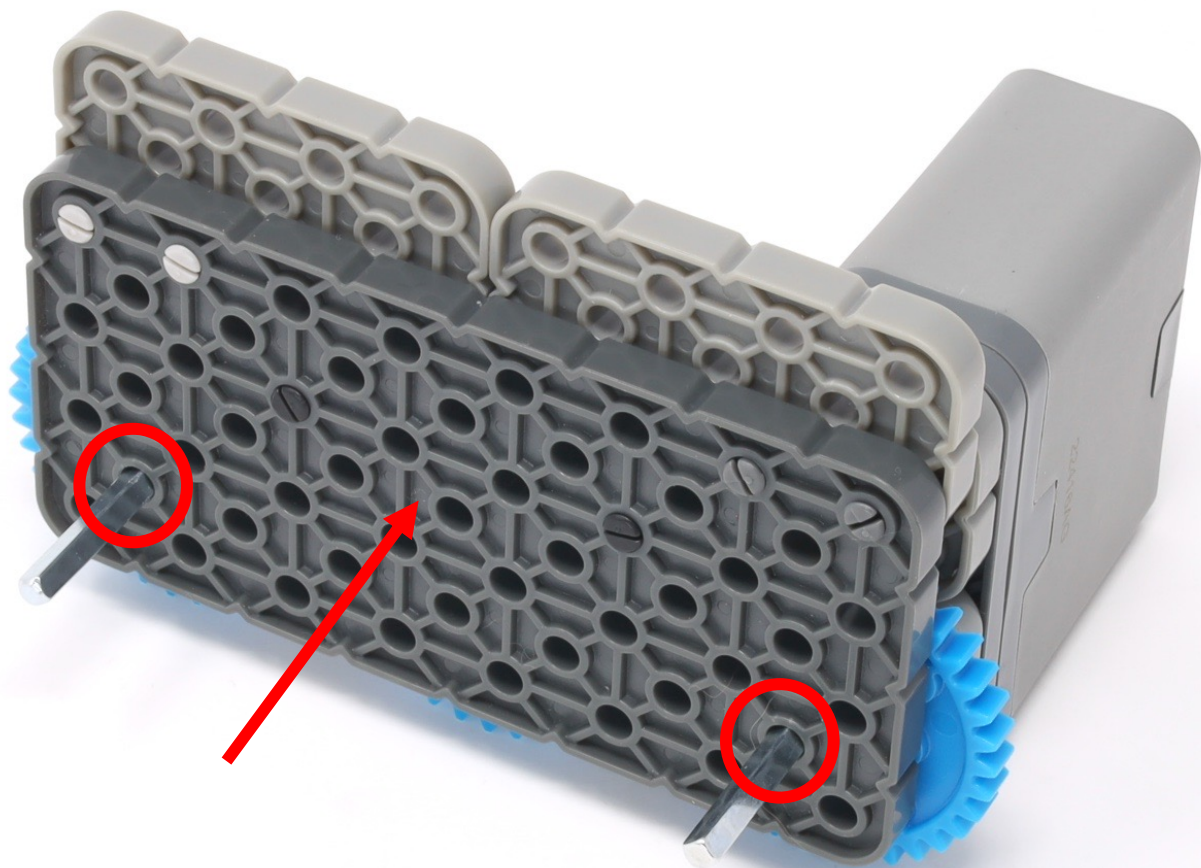












(2 x)

Make another identical copy (not a mirror image)





63 mm



63 mm



63 mm



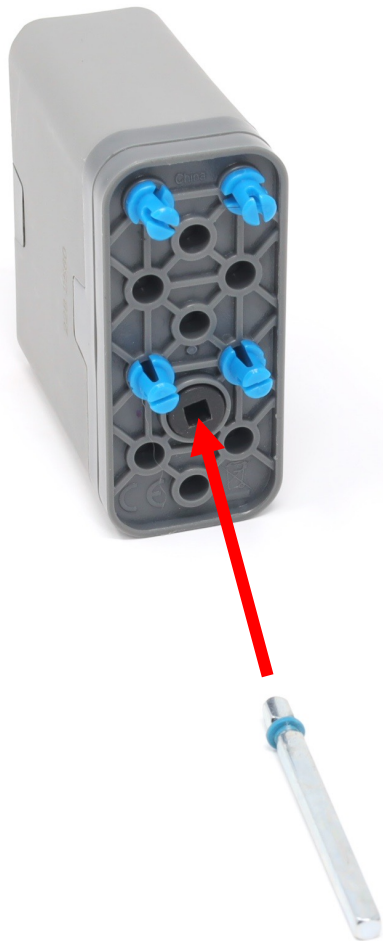
63 mm

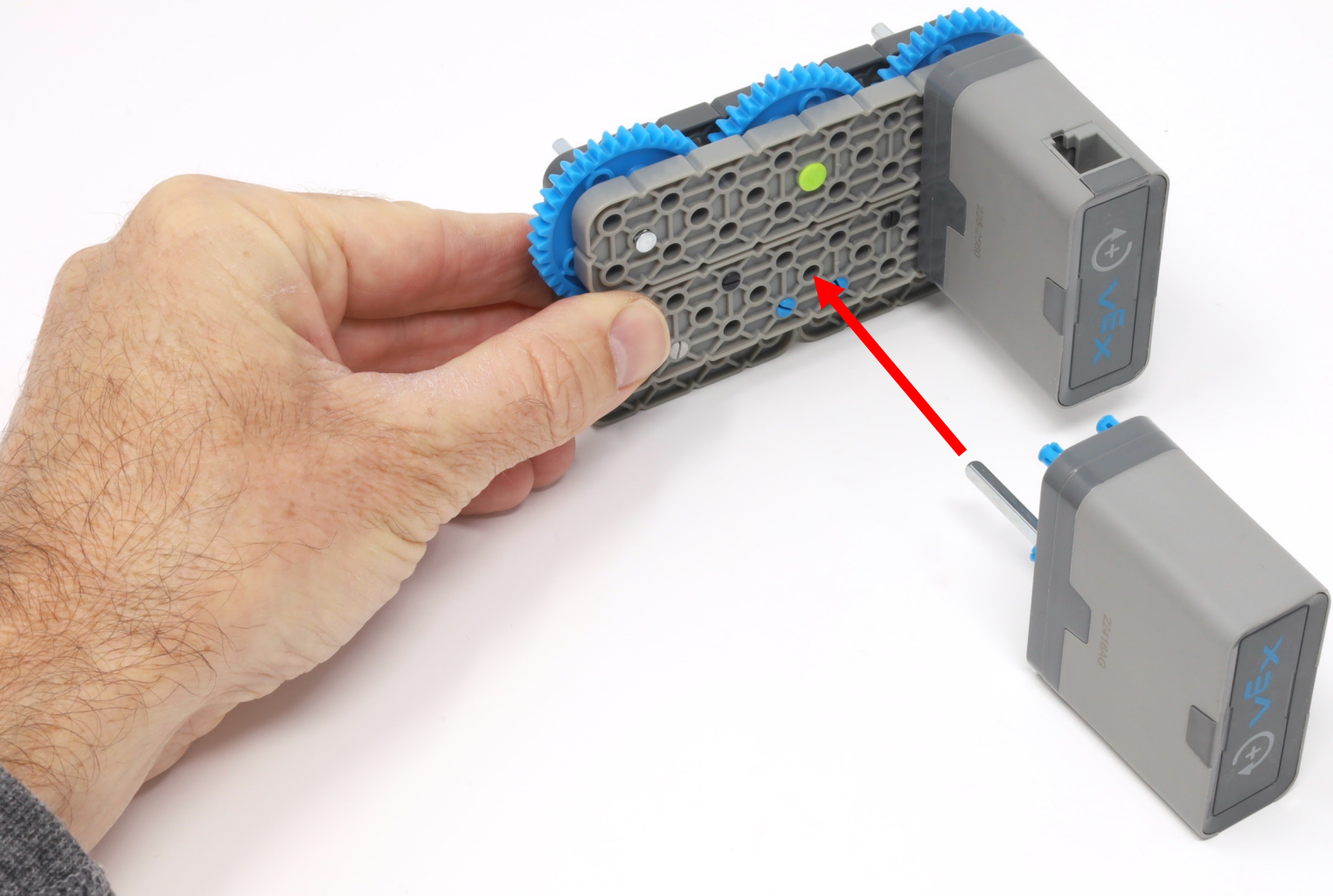


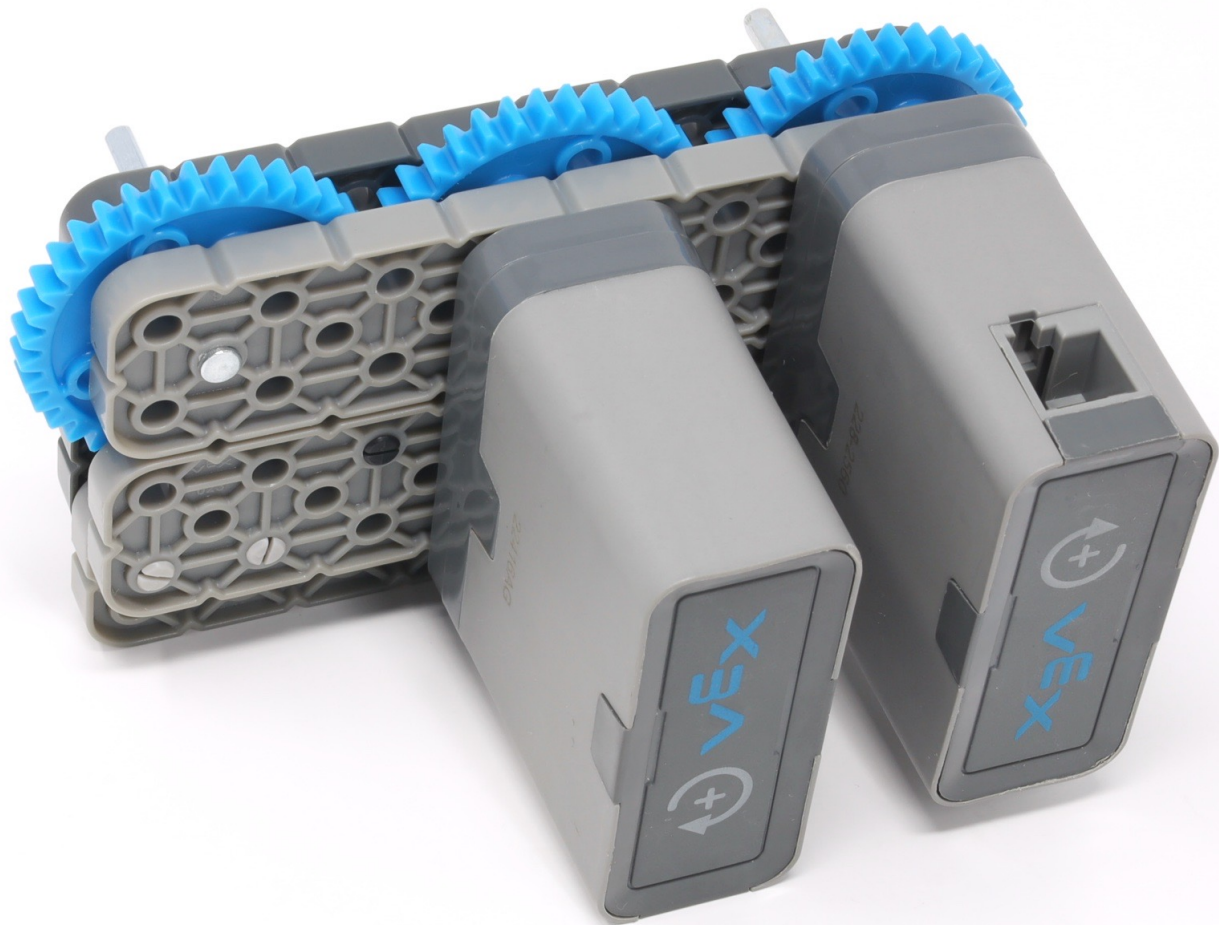
42 mm

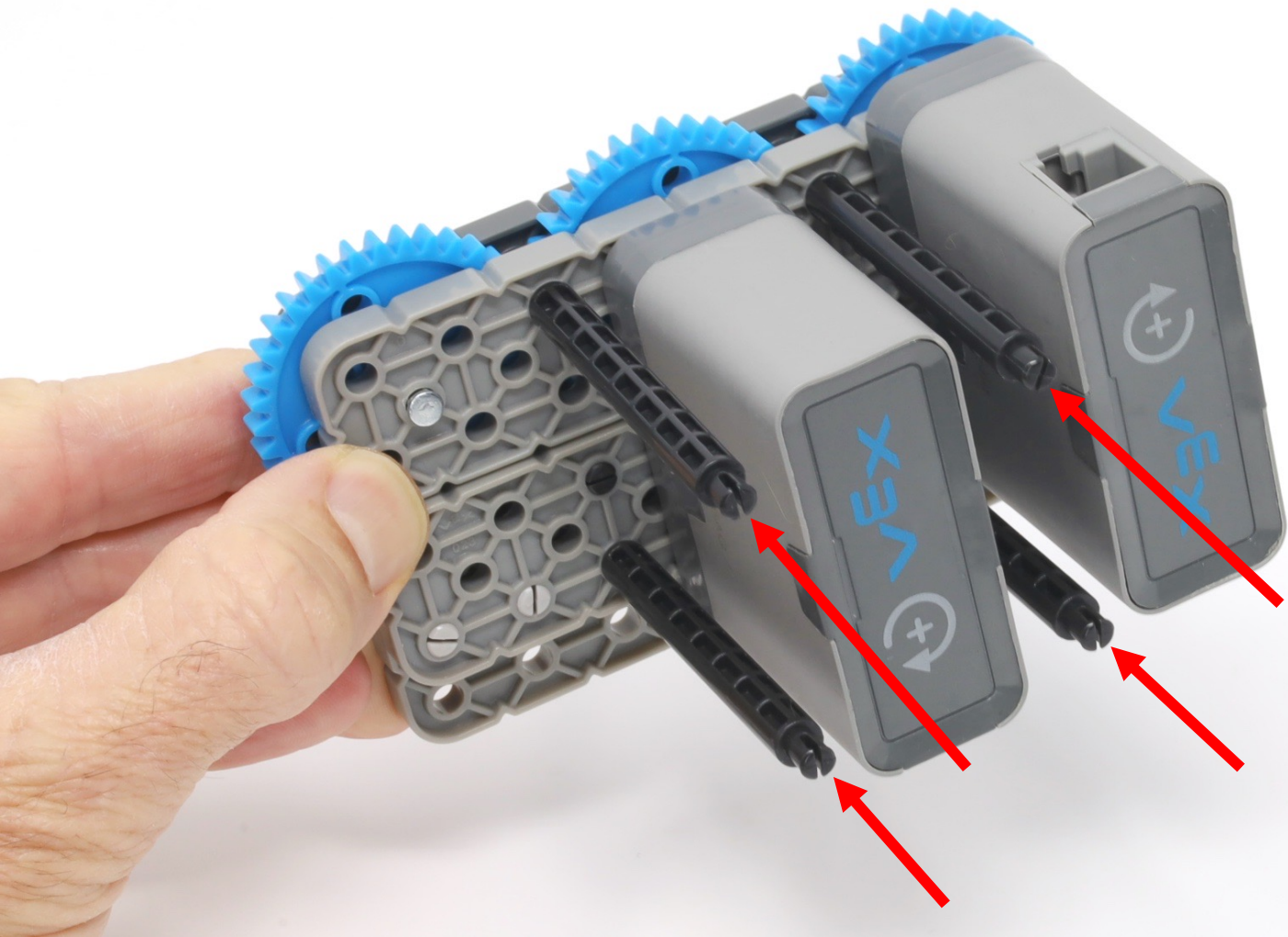






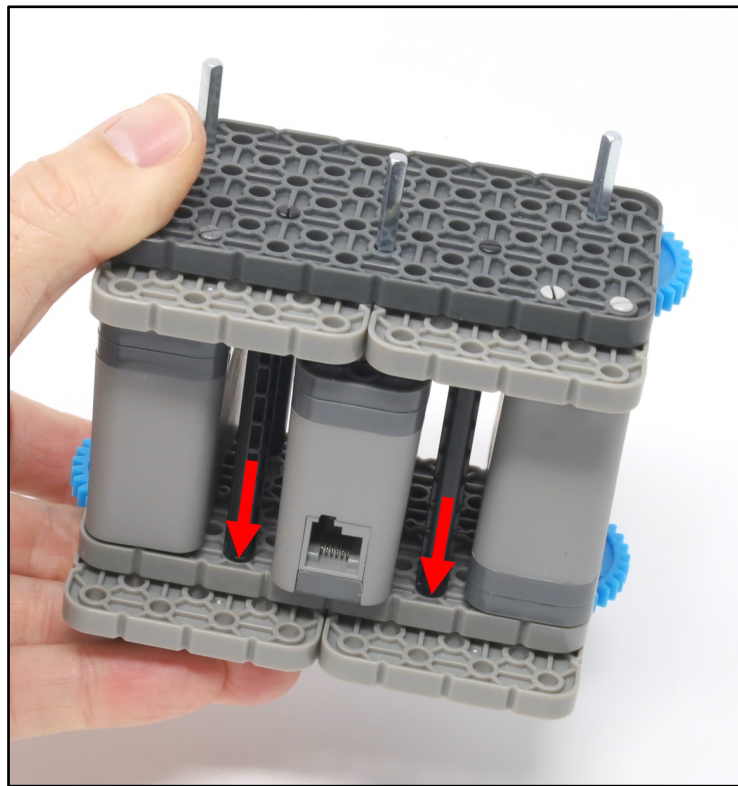
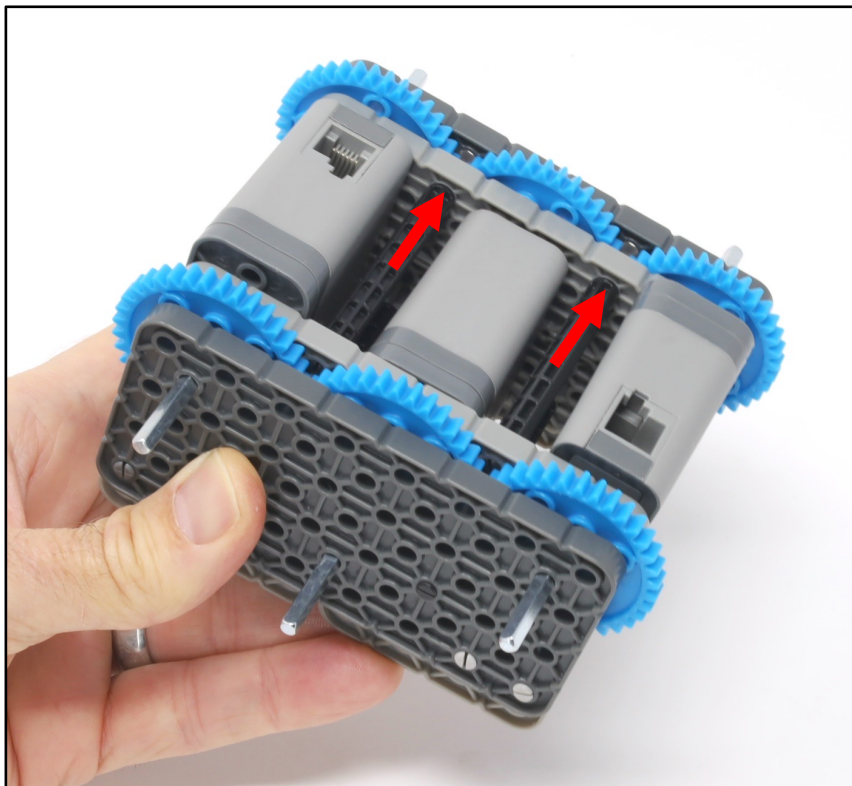








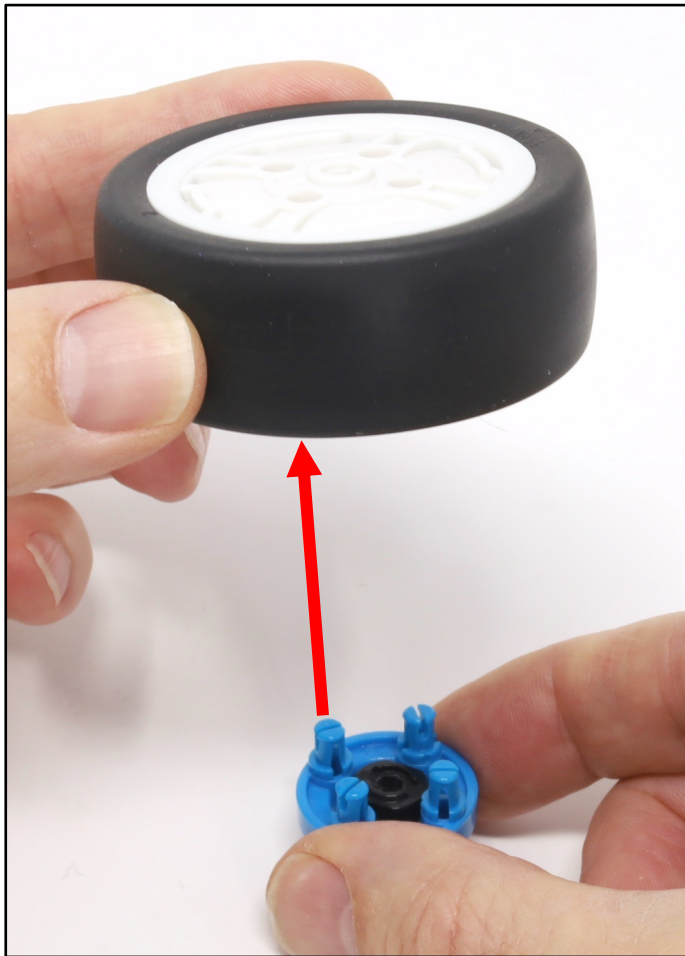
Make sure that all four standoffs connect





(8 x)

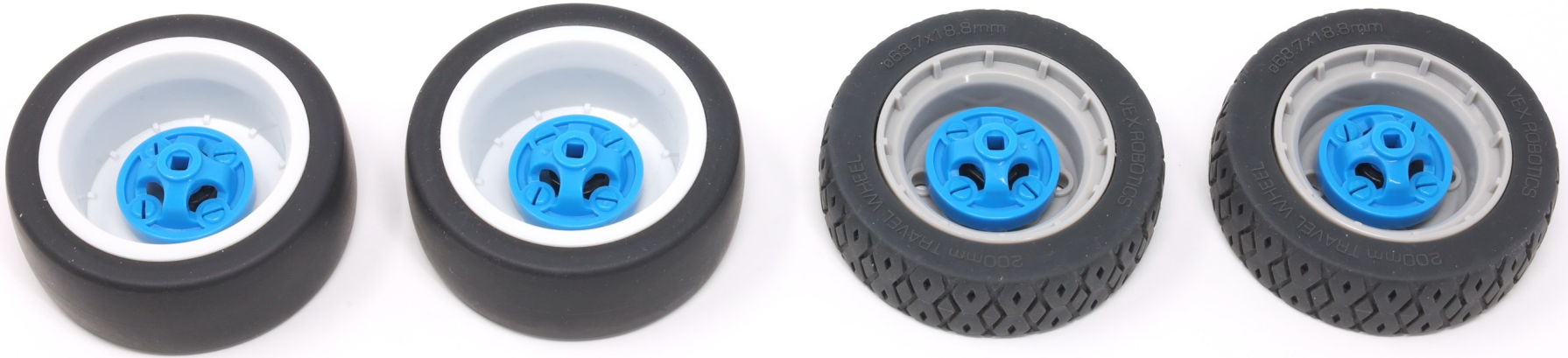




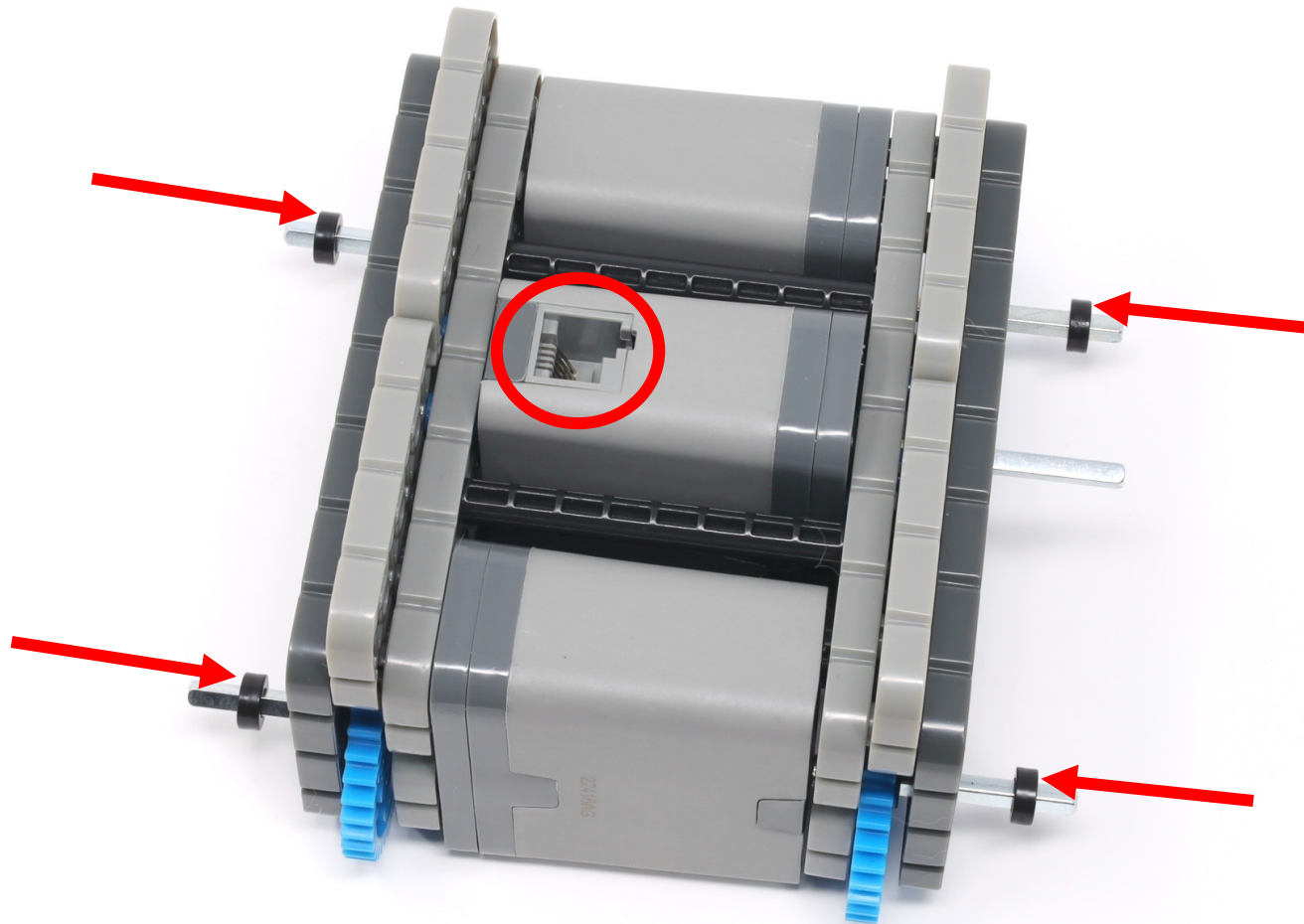
(2 x)

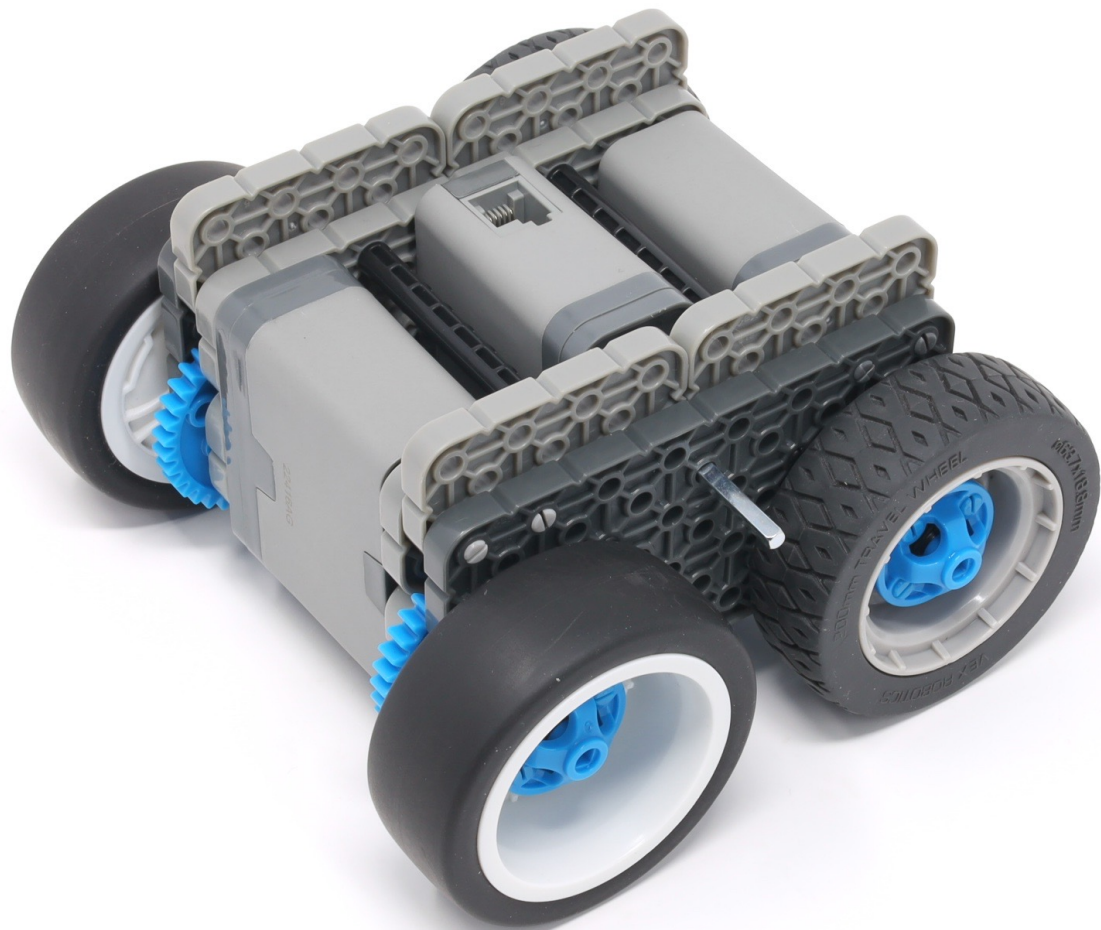


Repeat for both treaded rubber tires



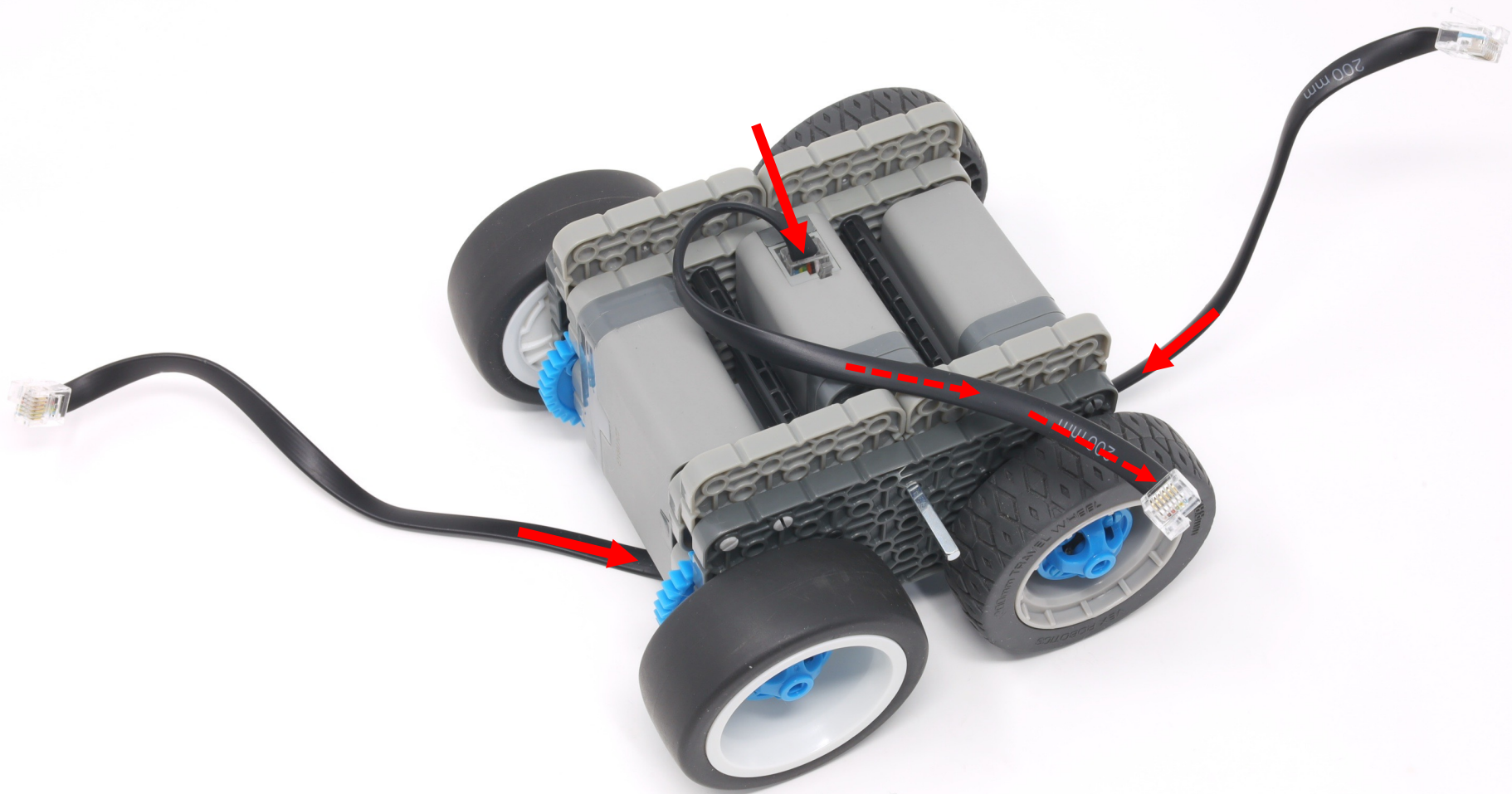


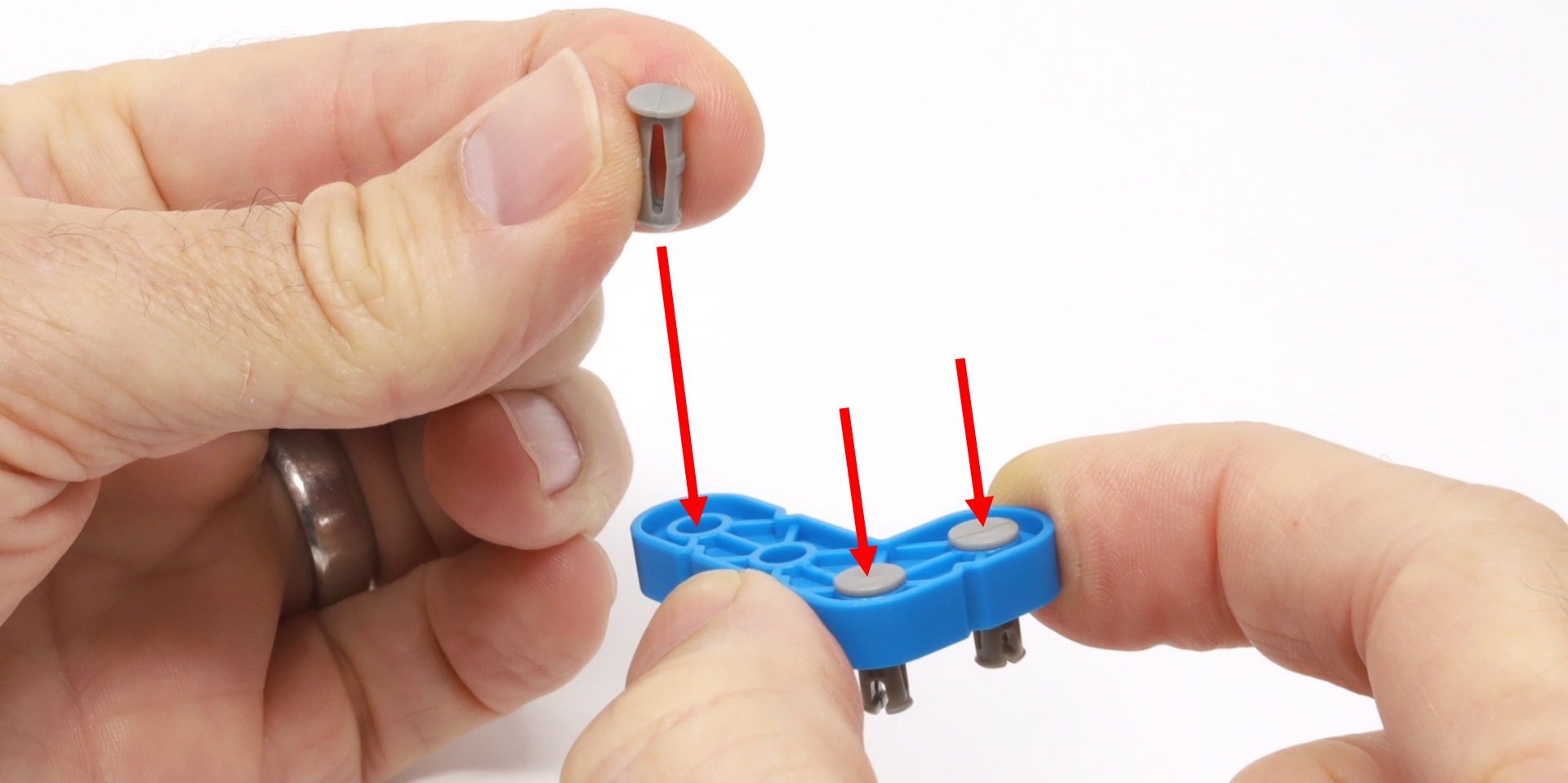




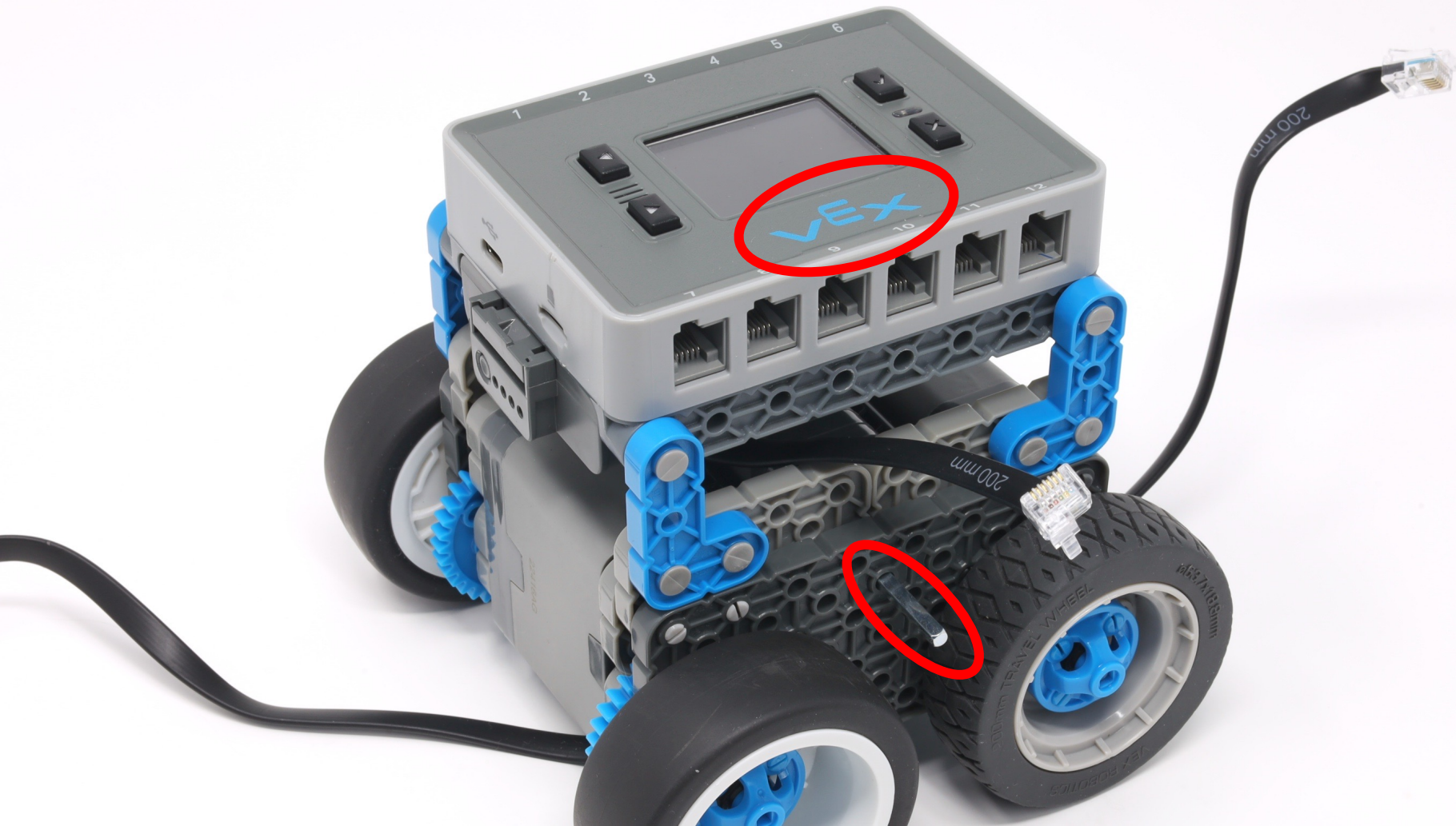


(12 x)

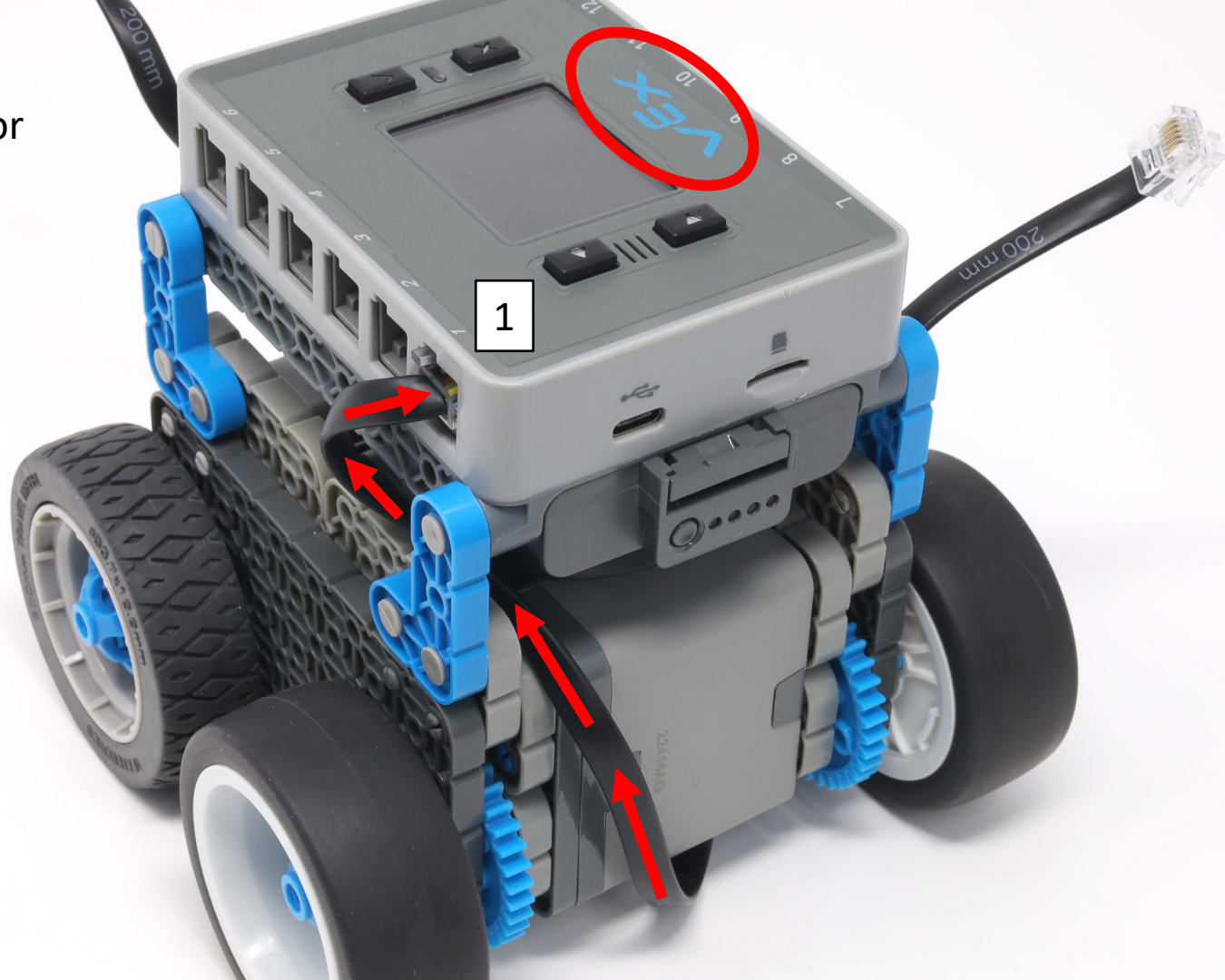




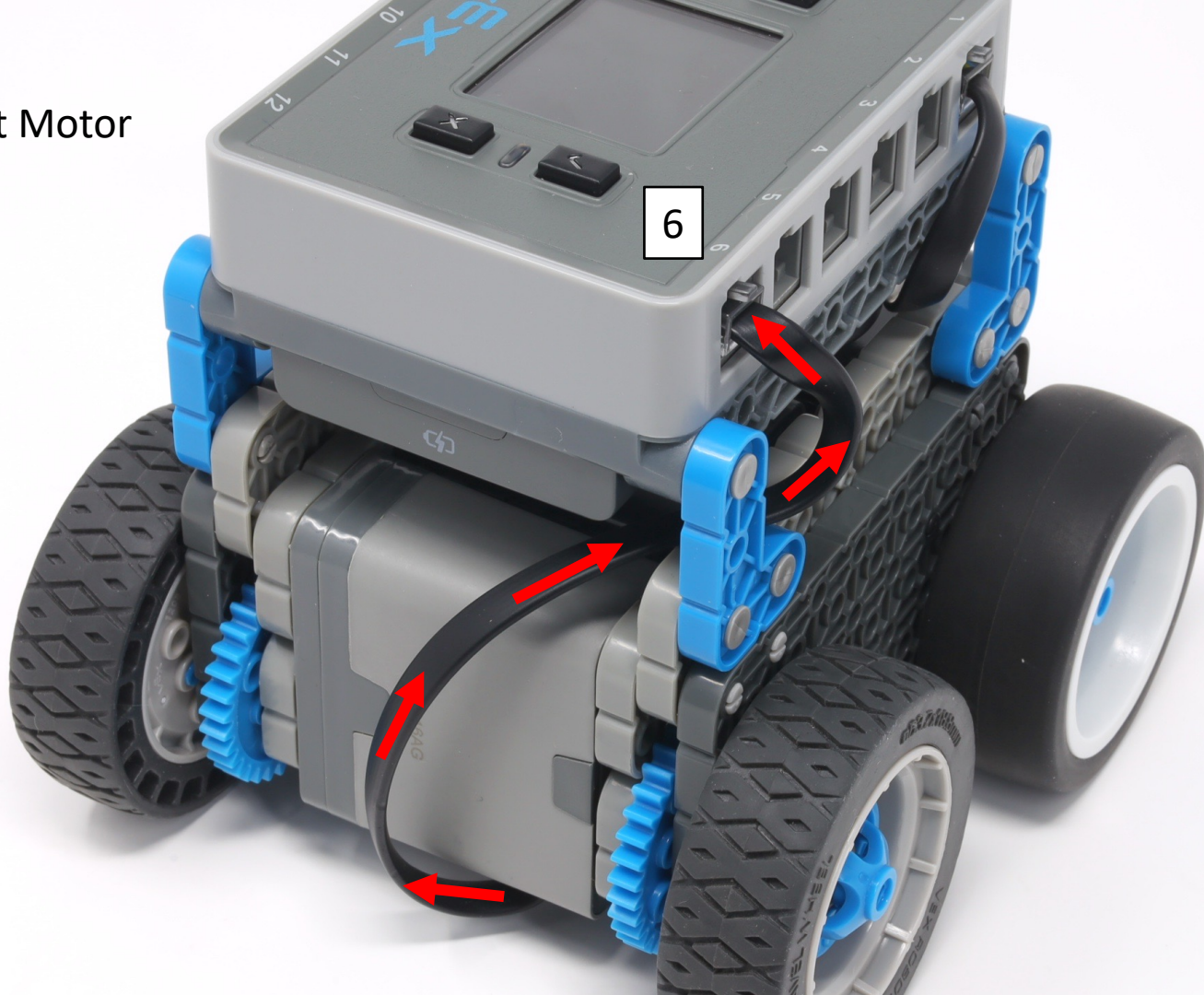




1 = Rear Motor

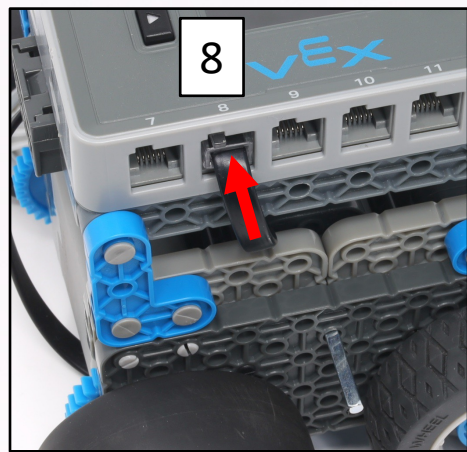


6 = Front Motor

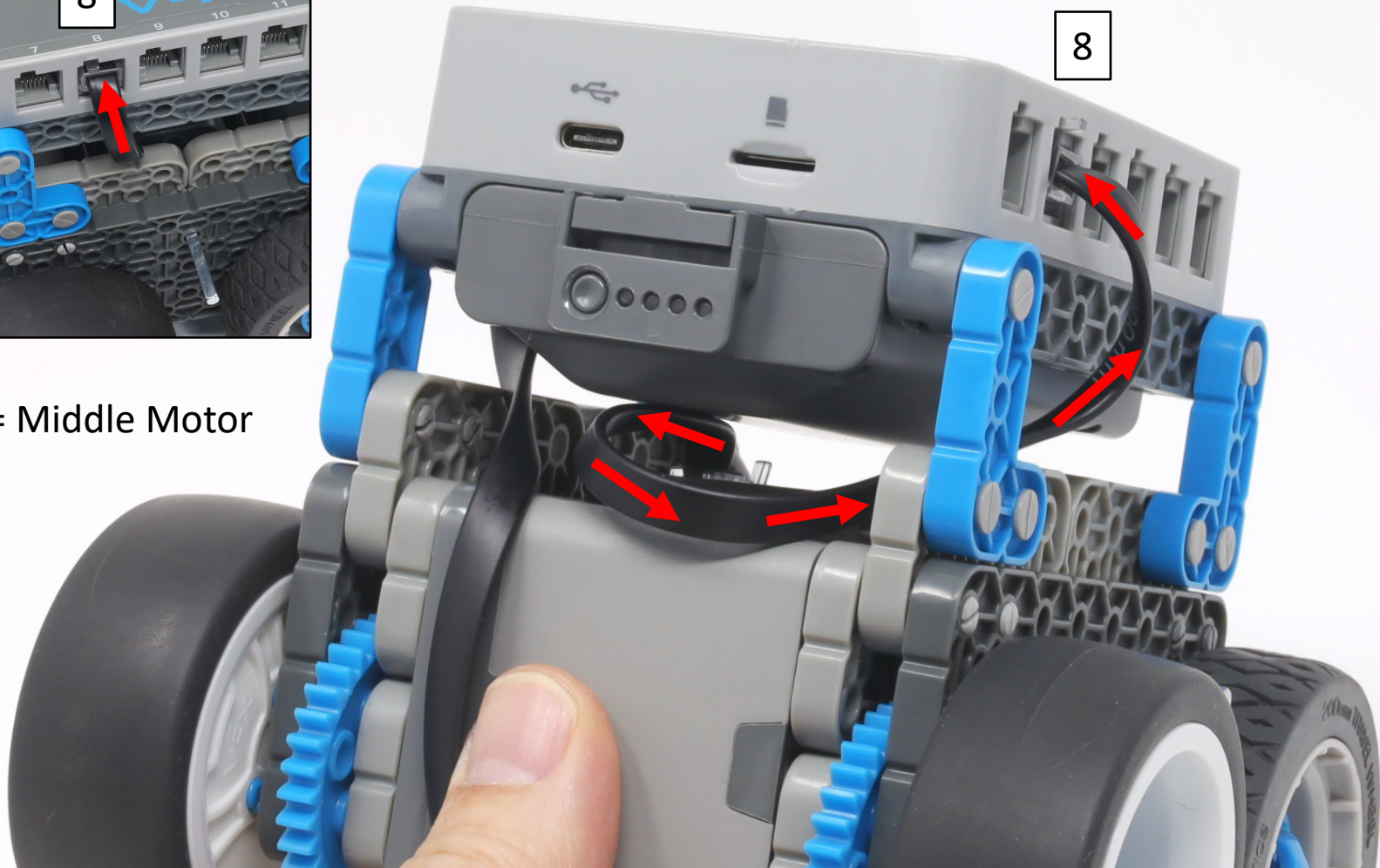








8 = Middle Motor



The USB port is on the back of the robot.

