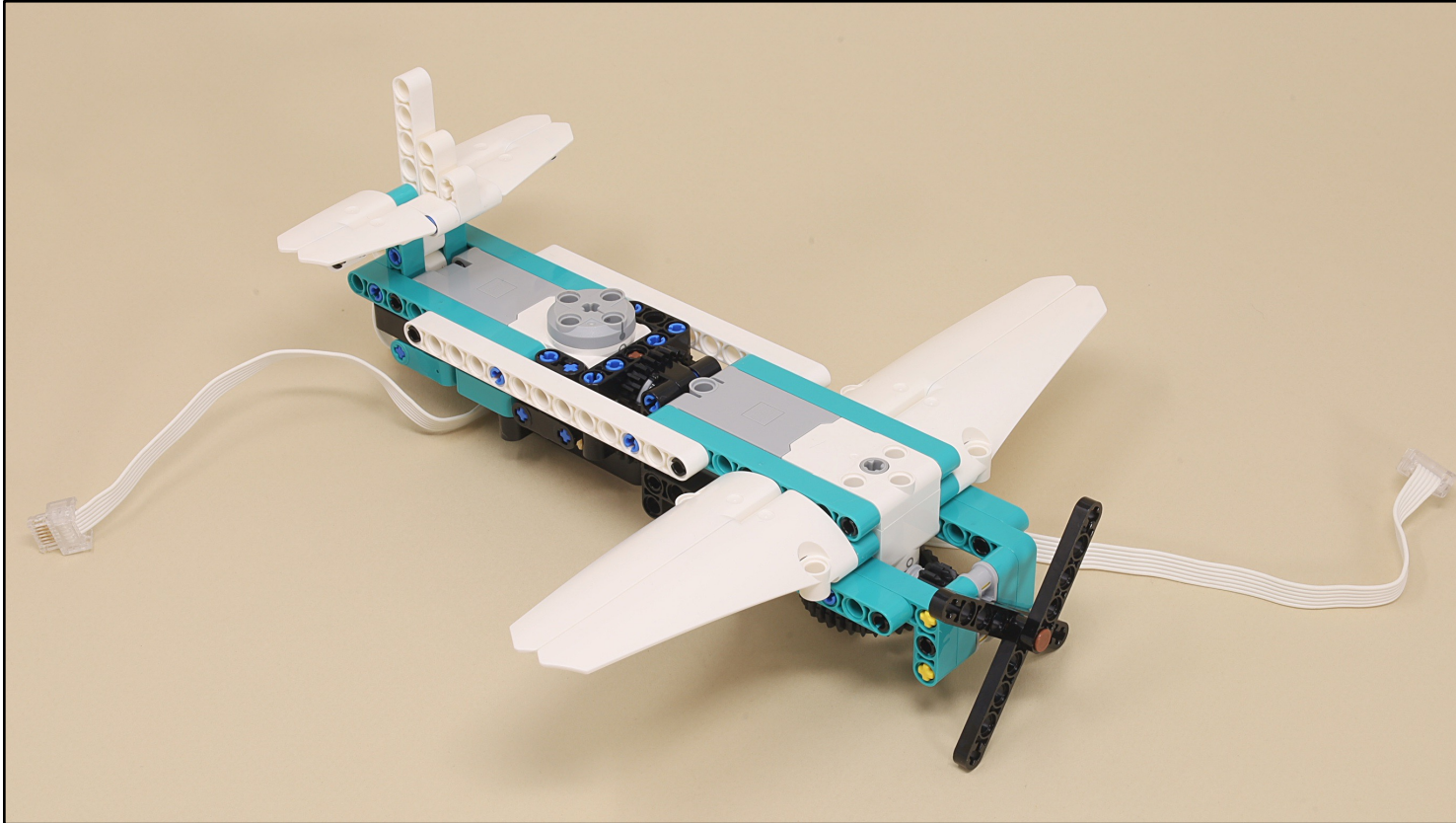
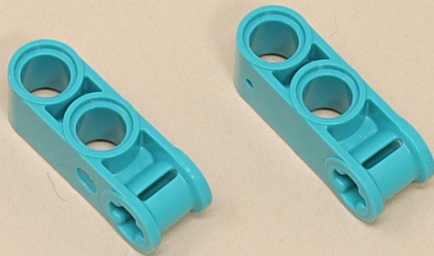


# Airplane for Flight Simulator



Scroll for  
building  
instructions

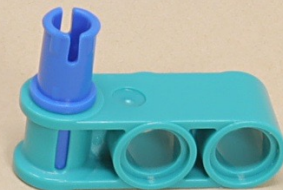
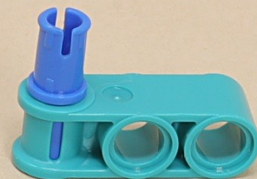
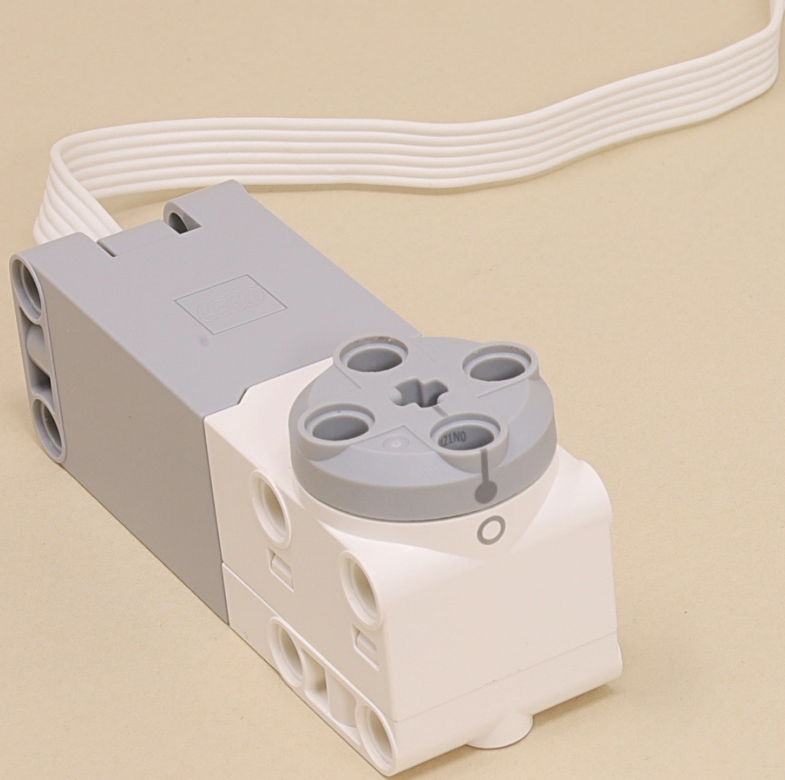


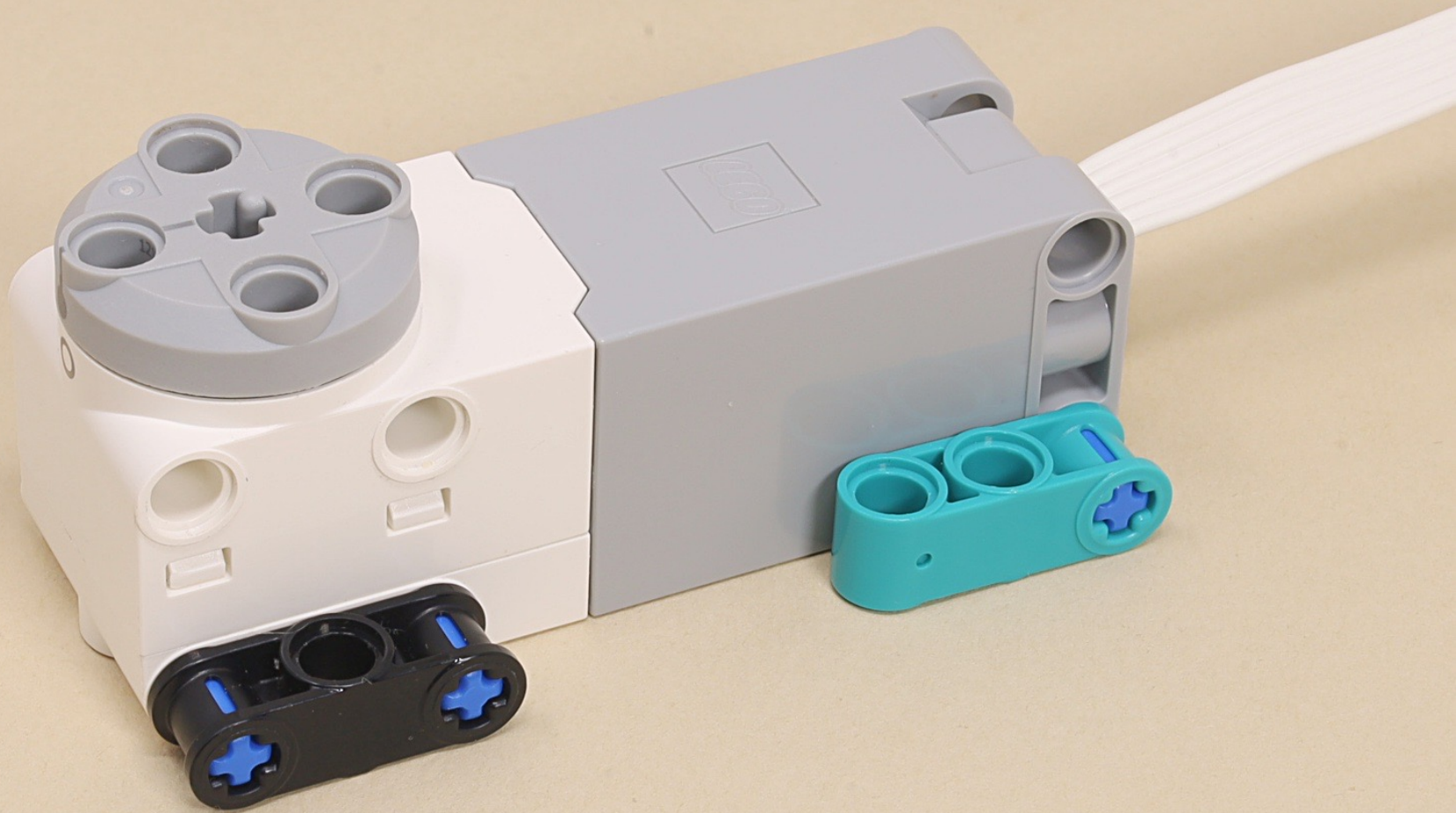


**(6 x)**















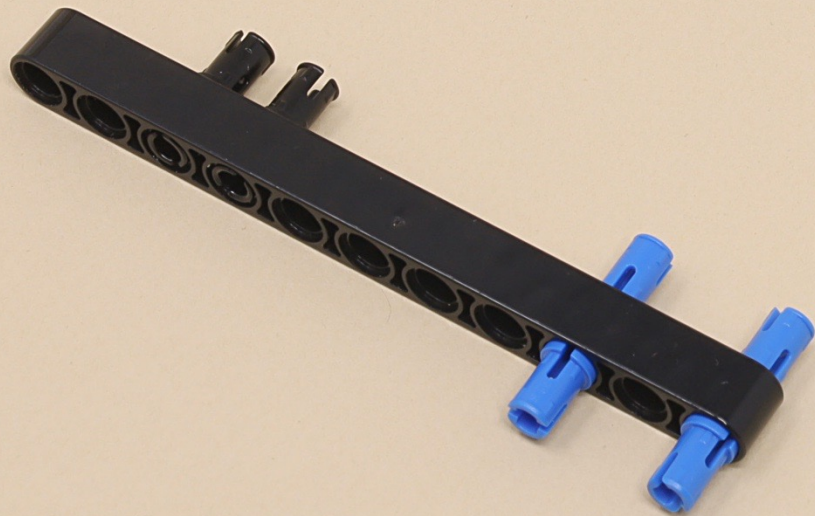
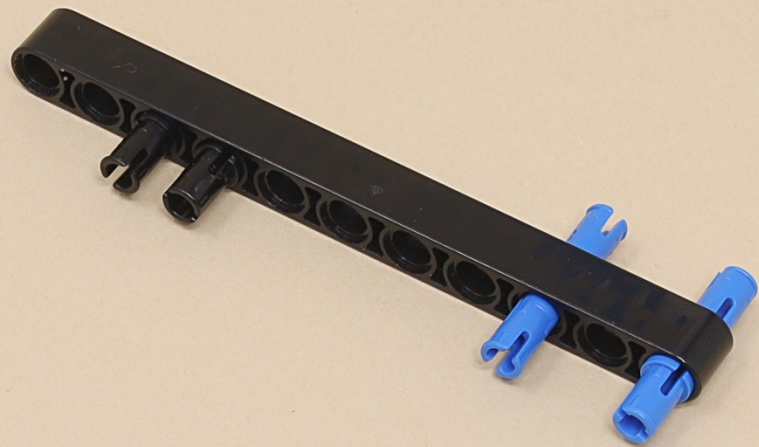
11

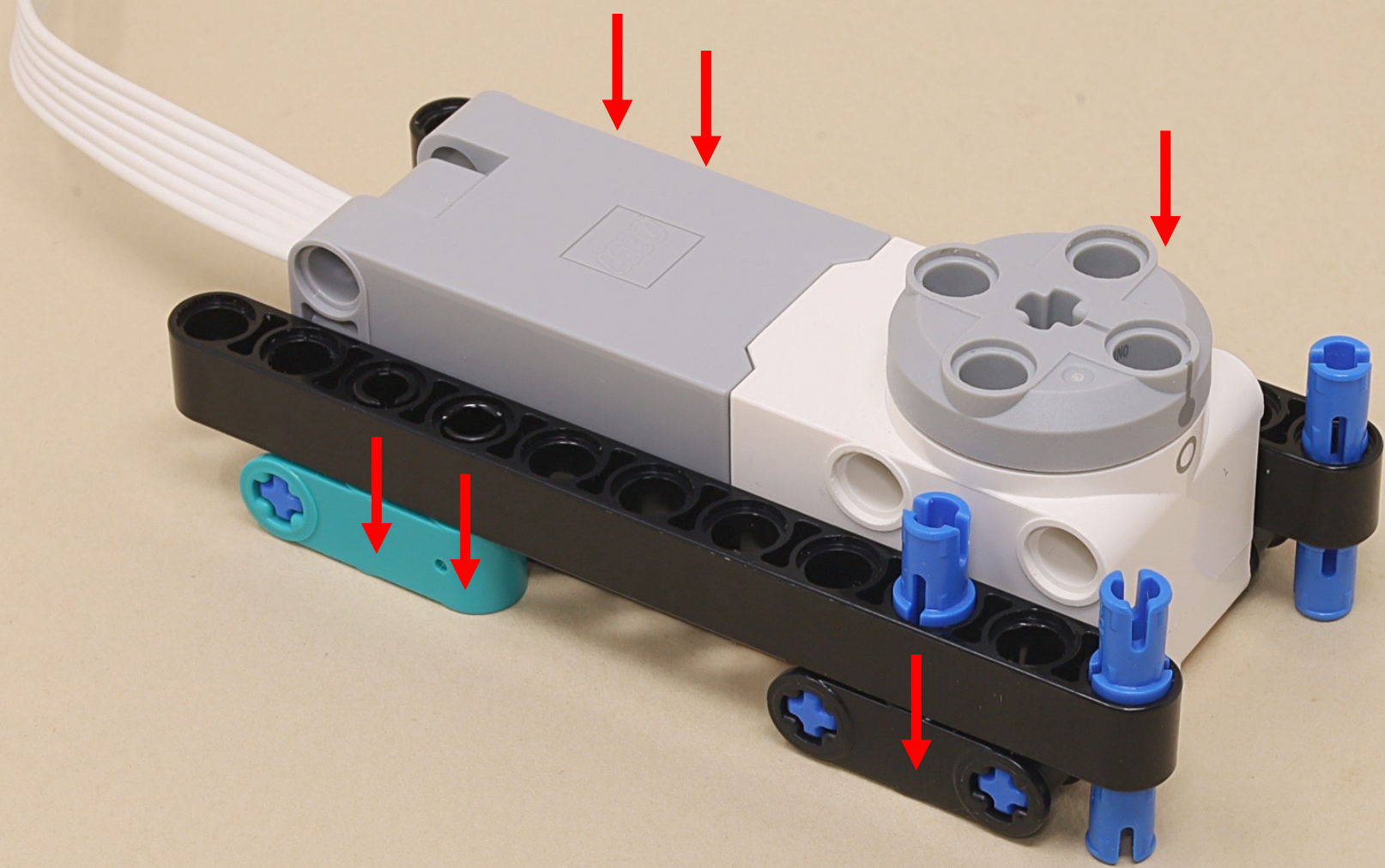


11

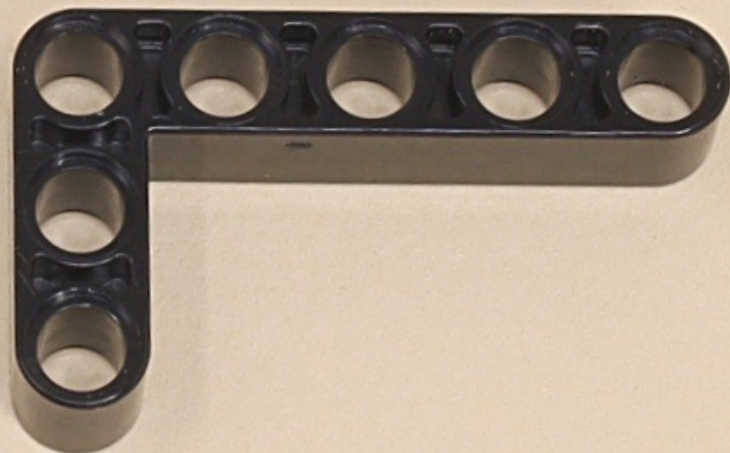






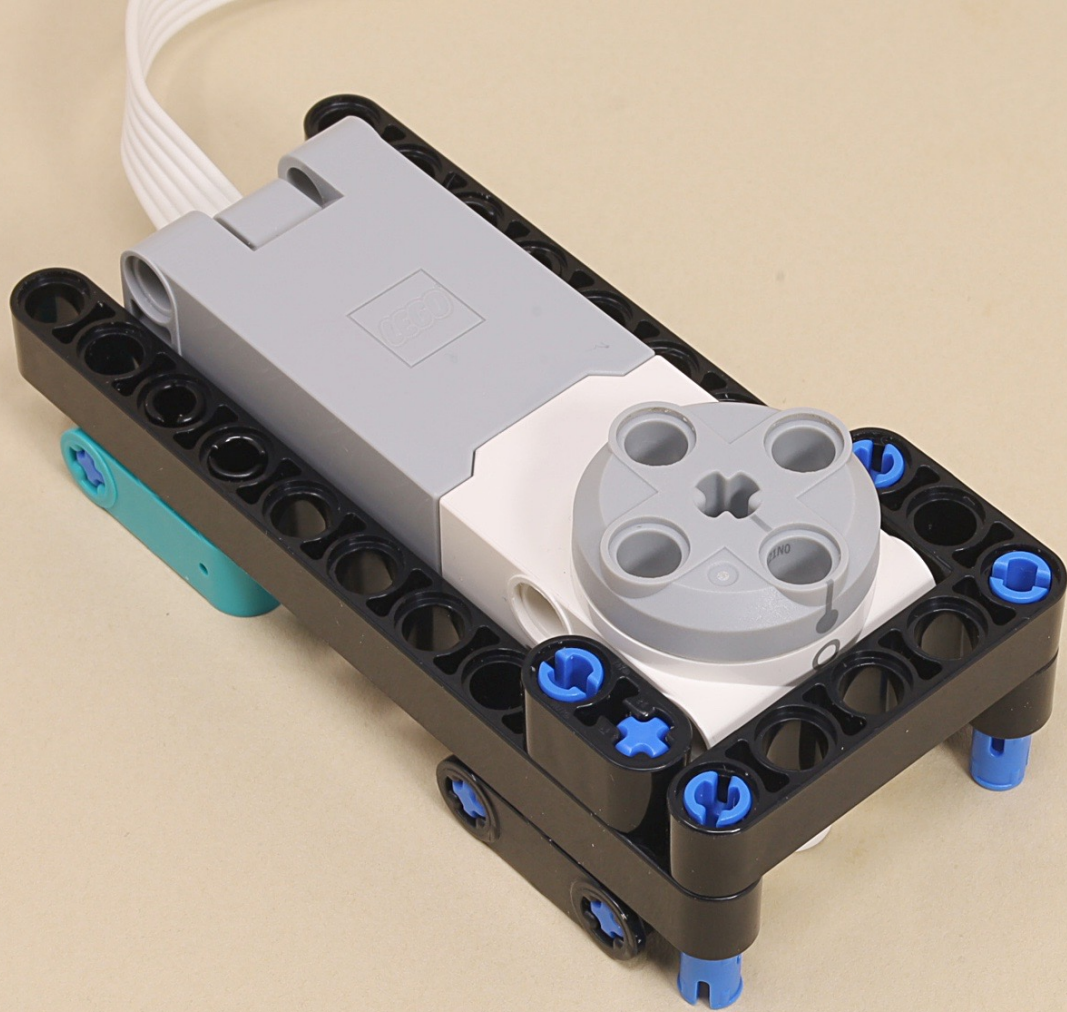












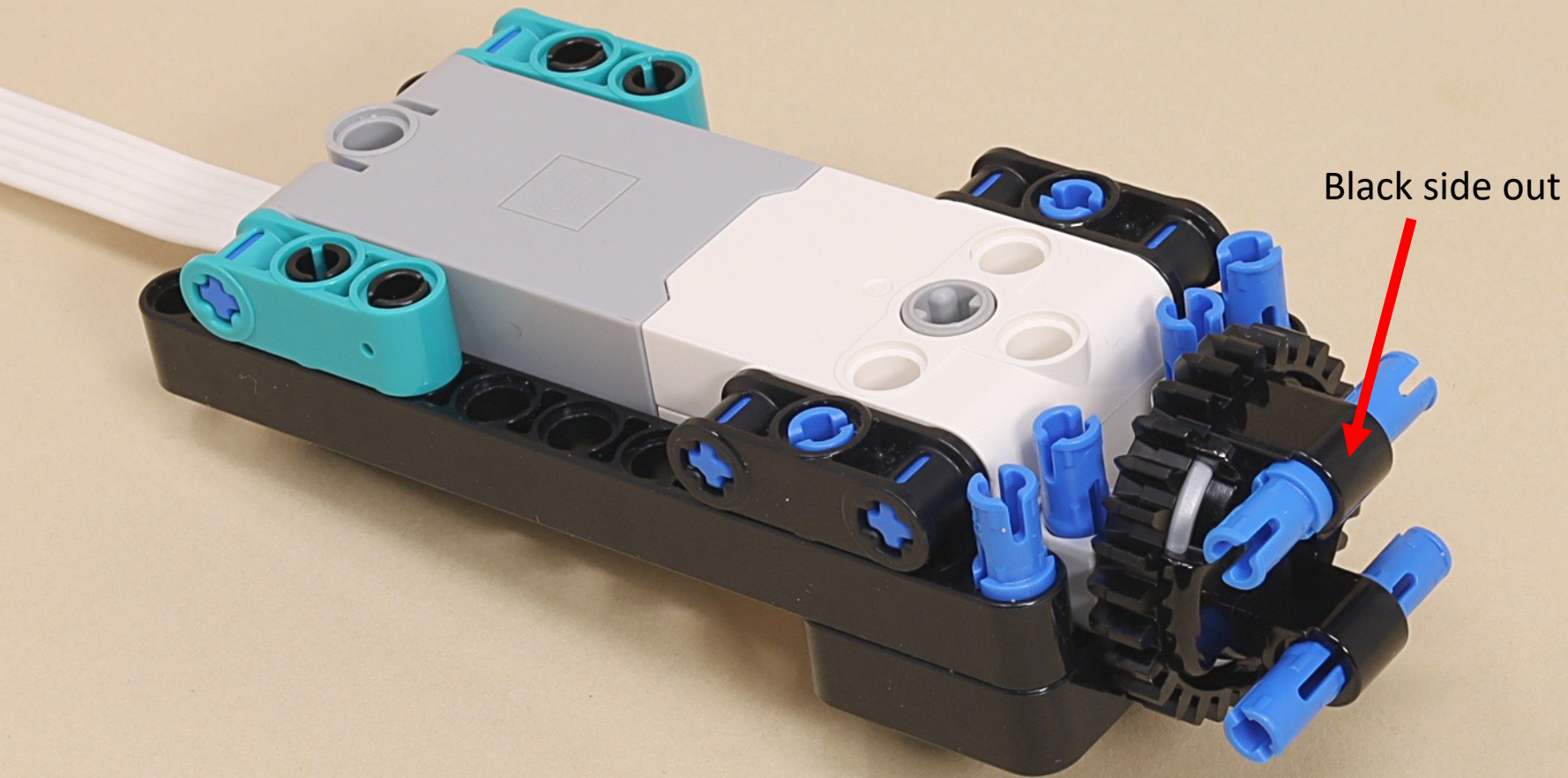




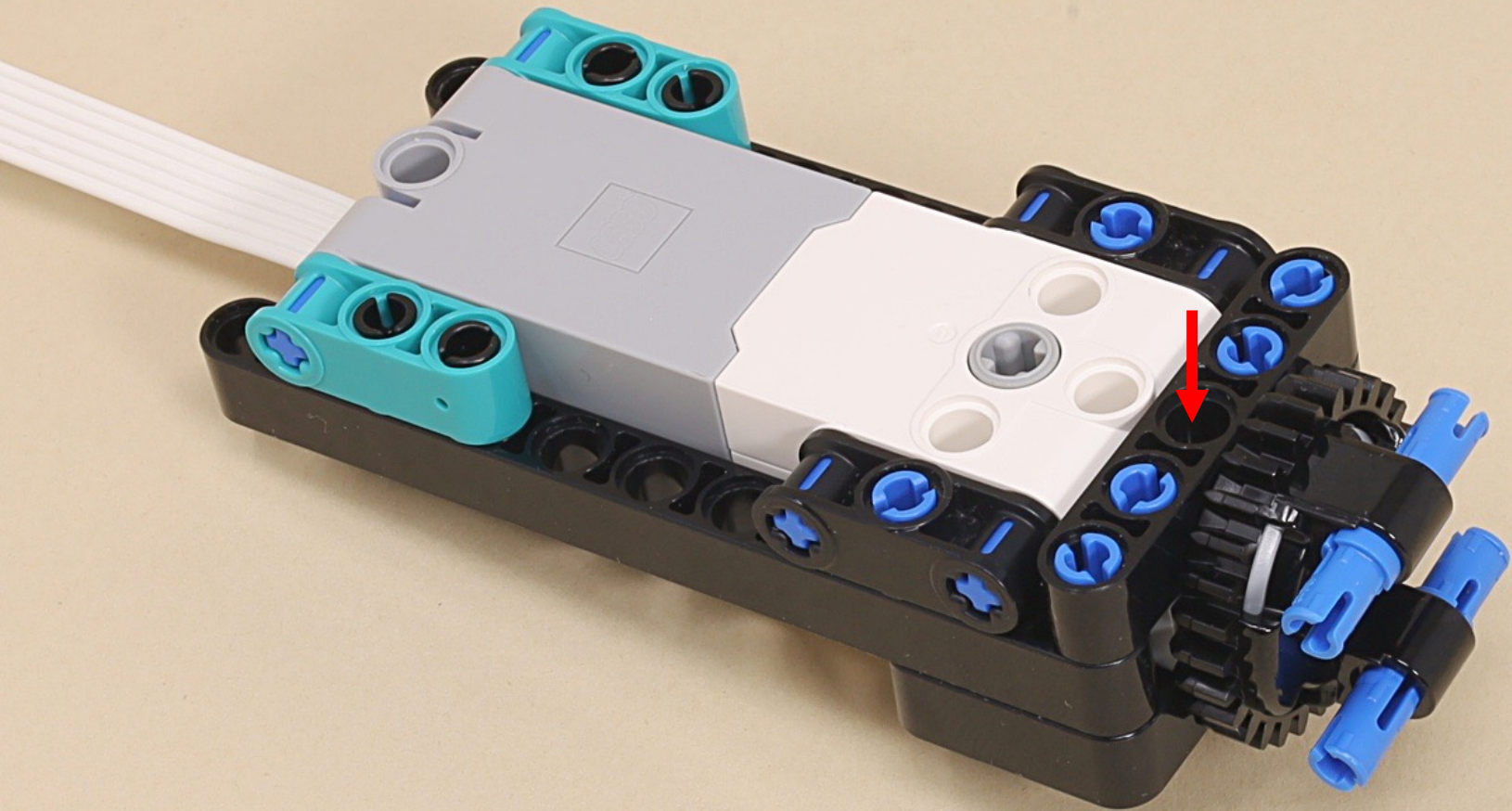








Black side out





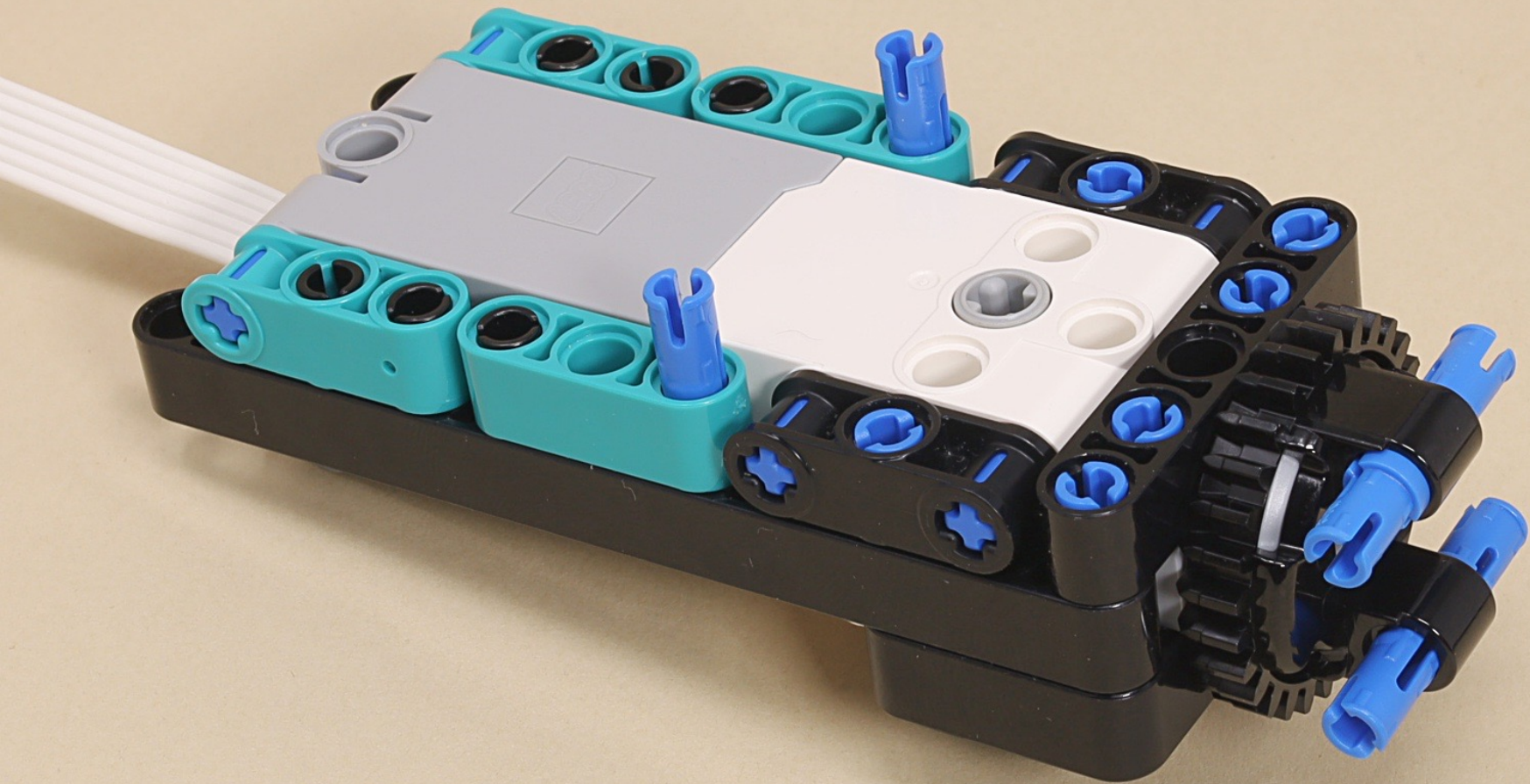


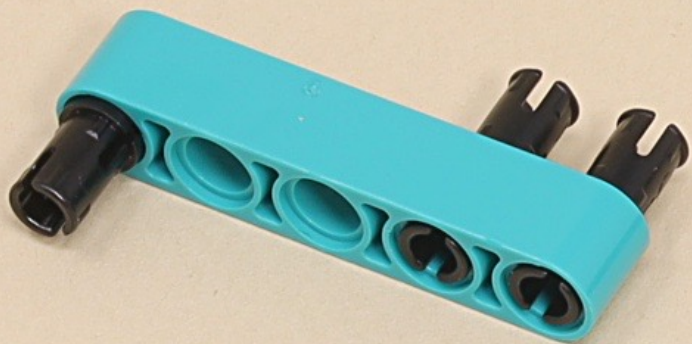
(6 x)



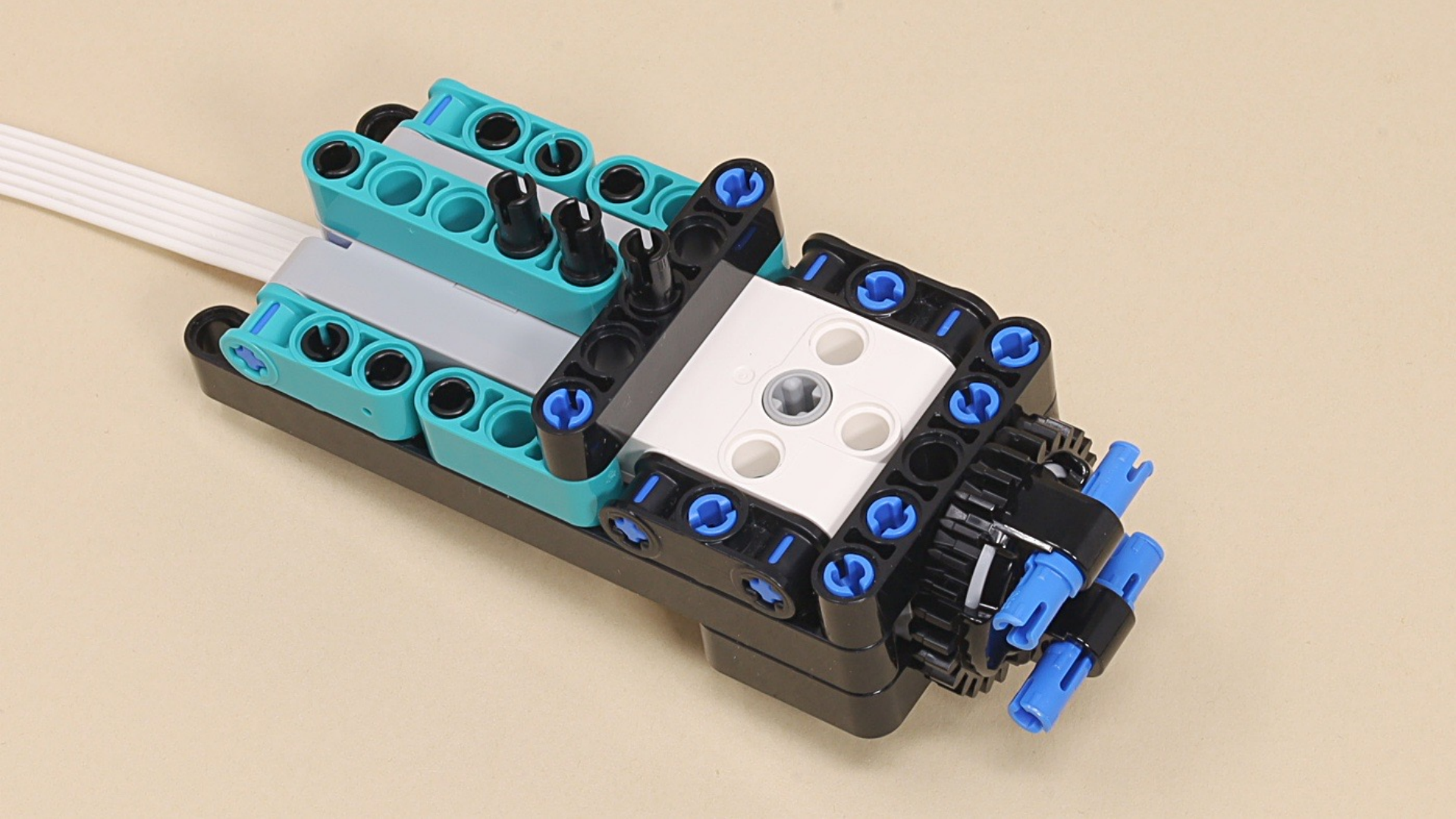


















7

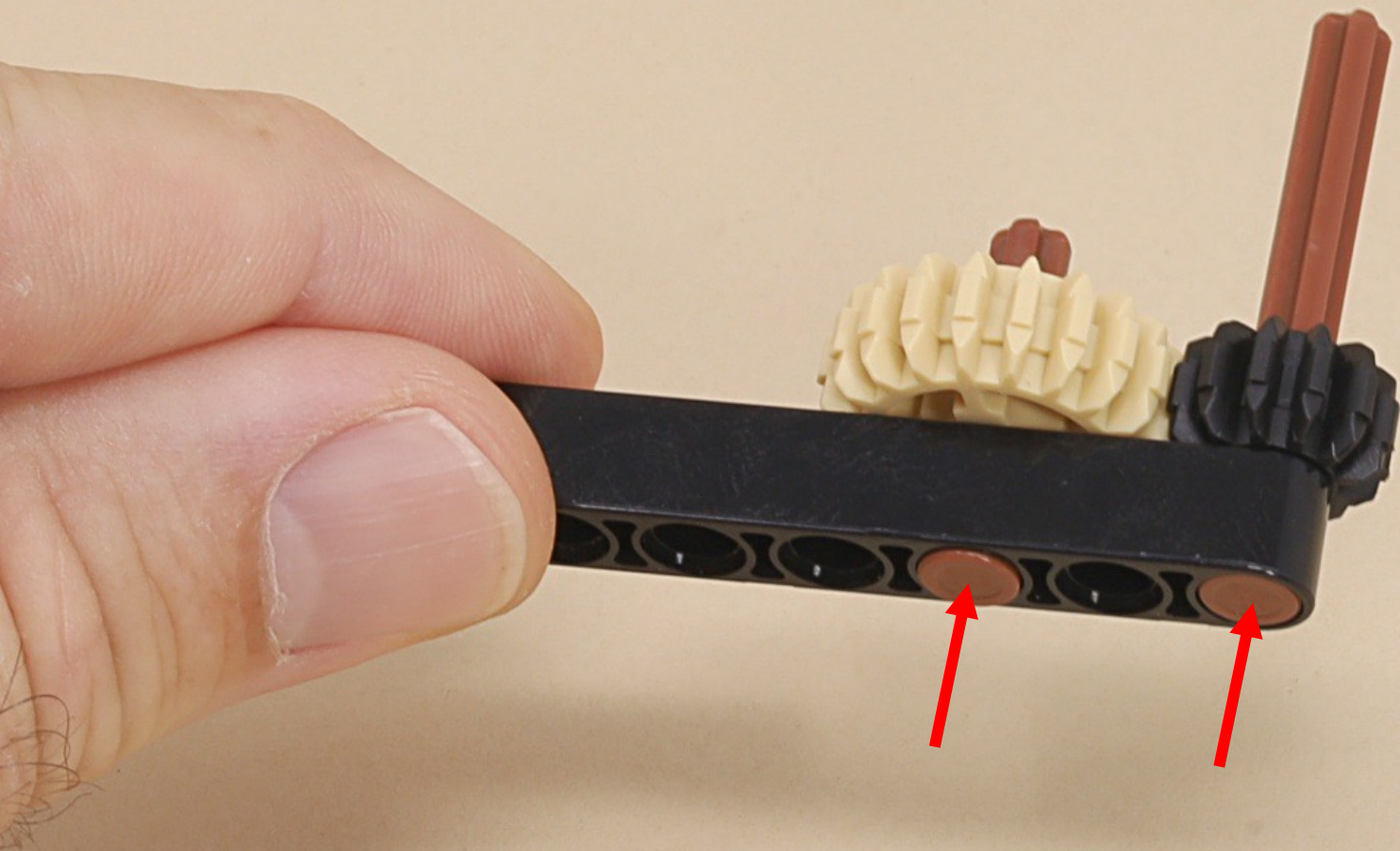


5



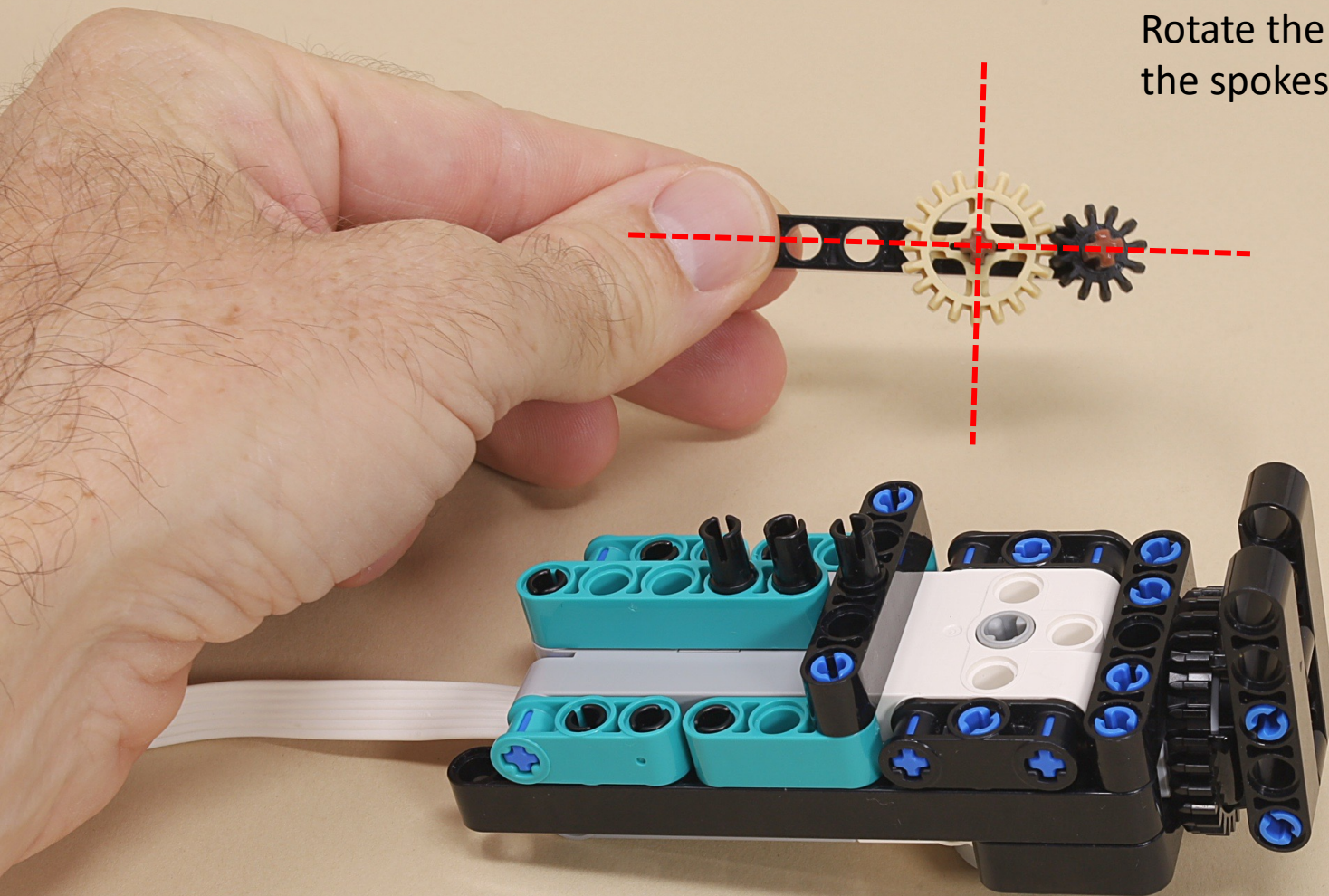
3



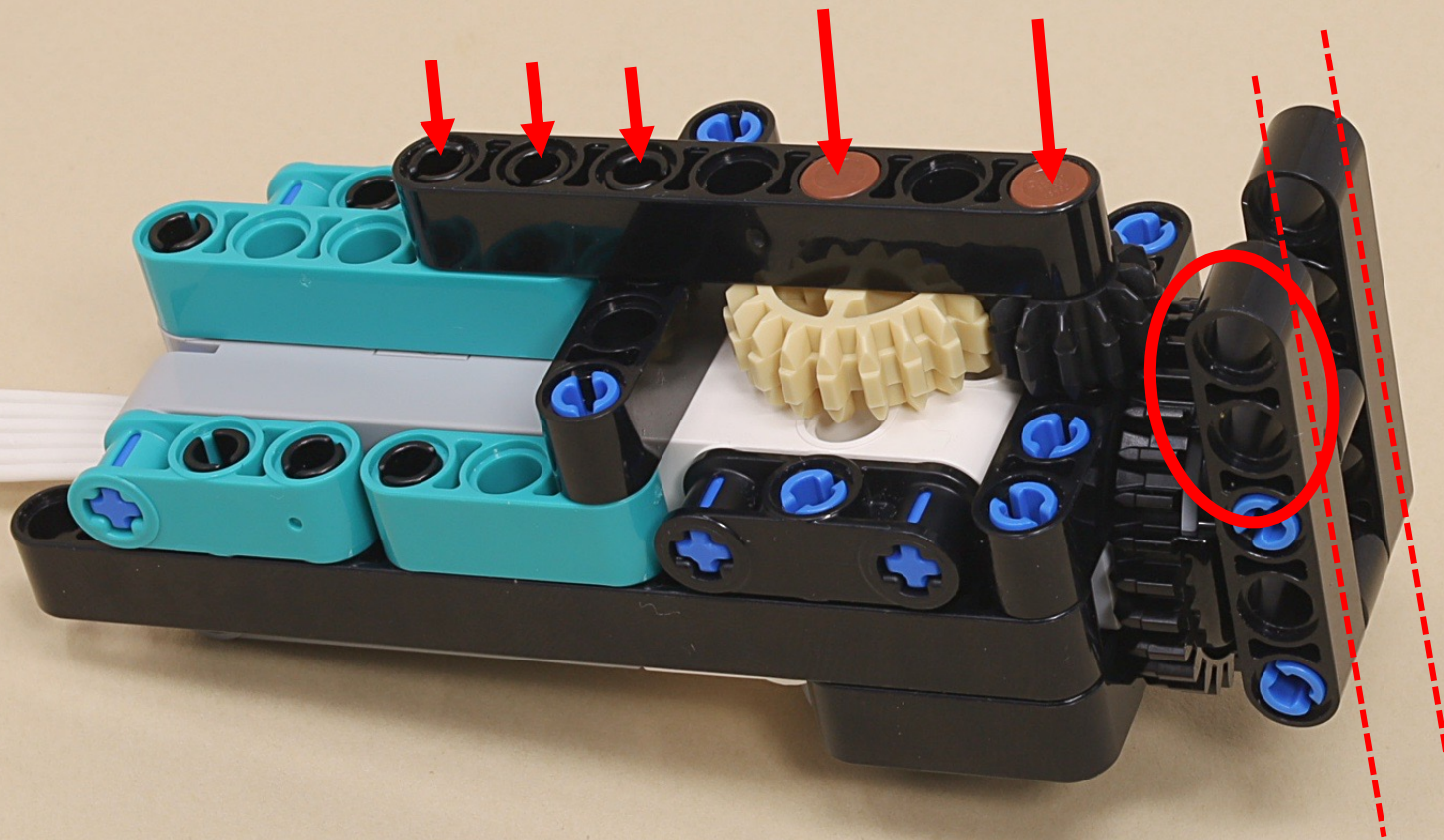




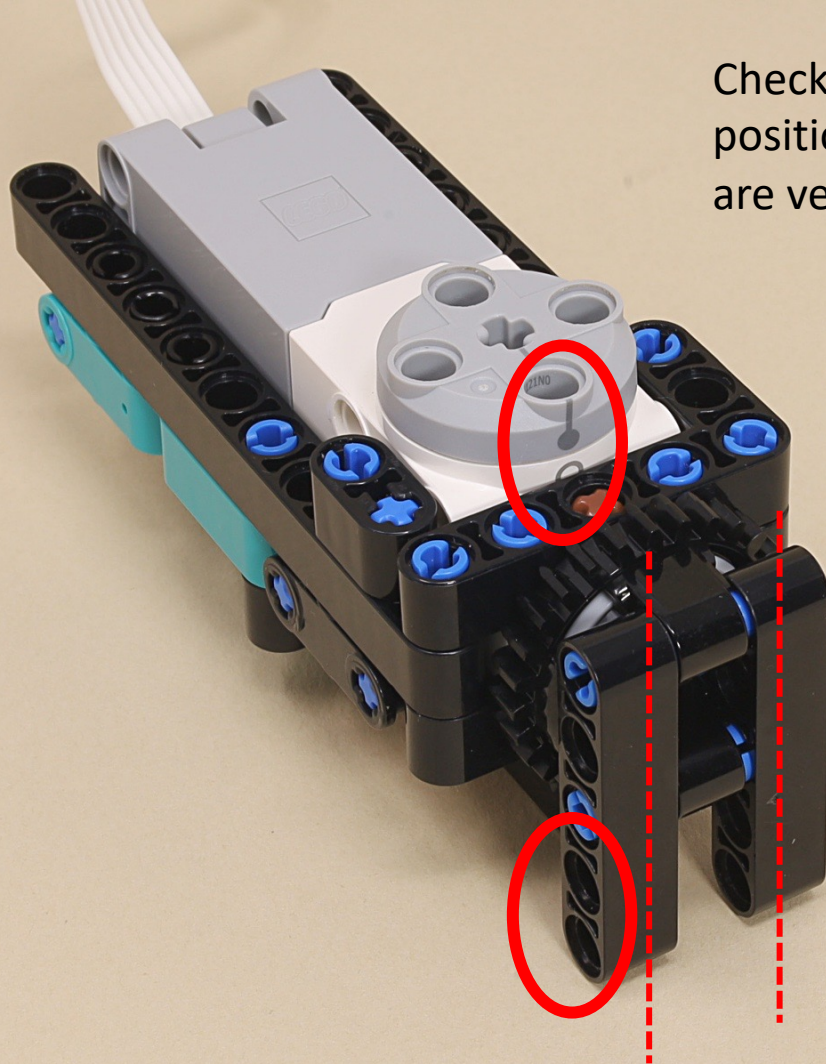
Rotate the beige gear to align  
the spokes with the beam.



Hold the turntable beams to keep them vertical as shown while inserting the gear axles.







Check that the motor is in its zero position while the turntable beams are vertical as shown.

Remove and adjust the gear axles if necessary.



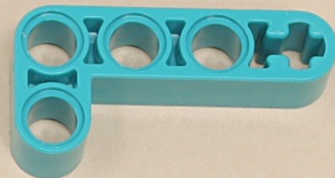
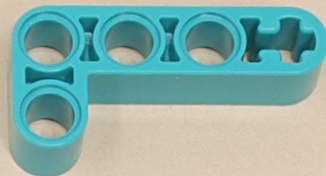
9



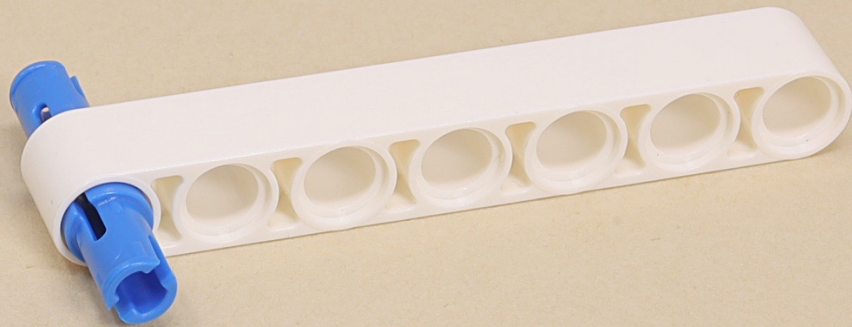
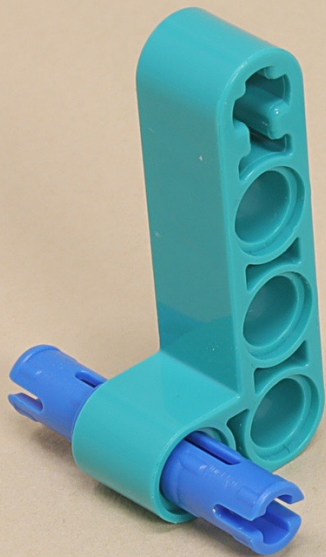
9

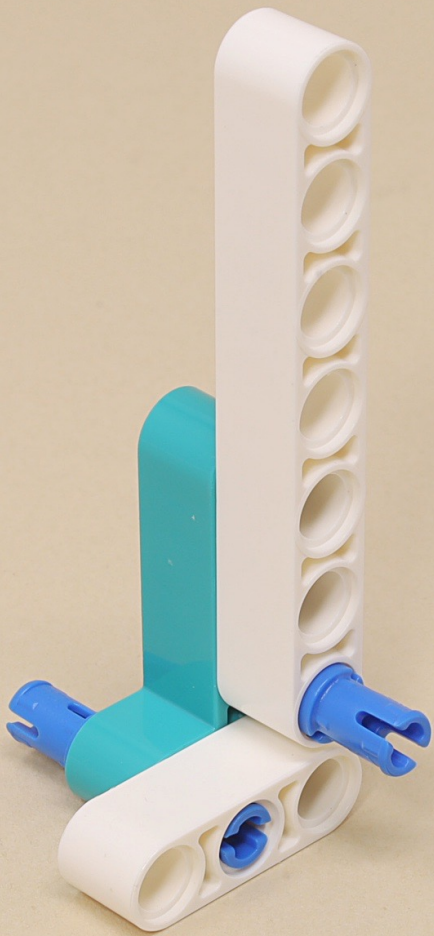


7

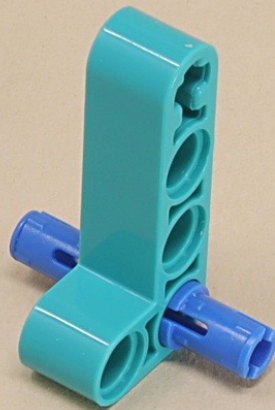
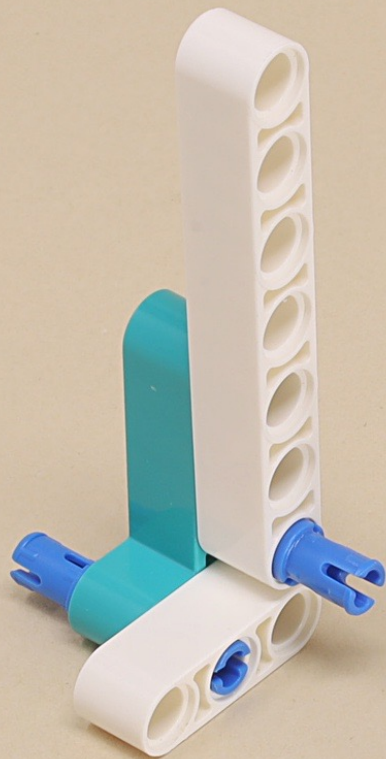


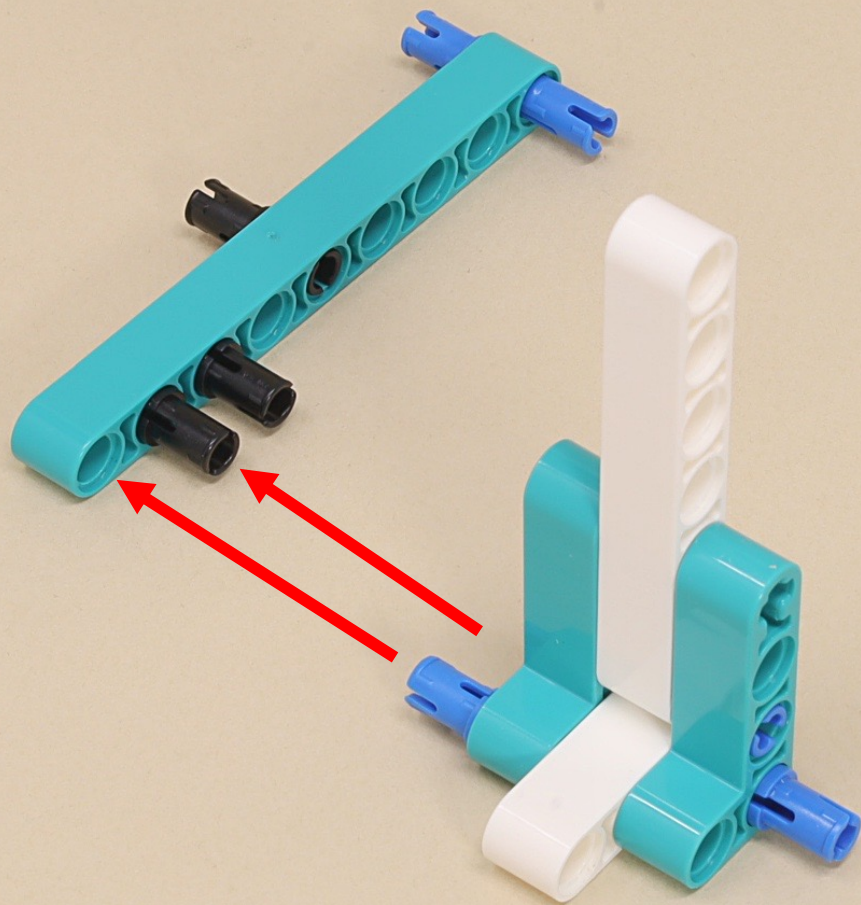




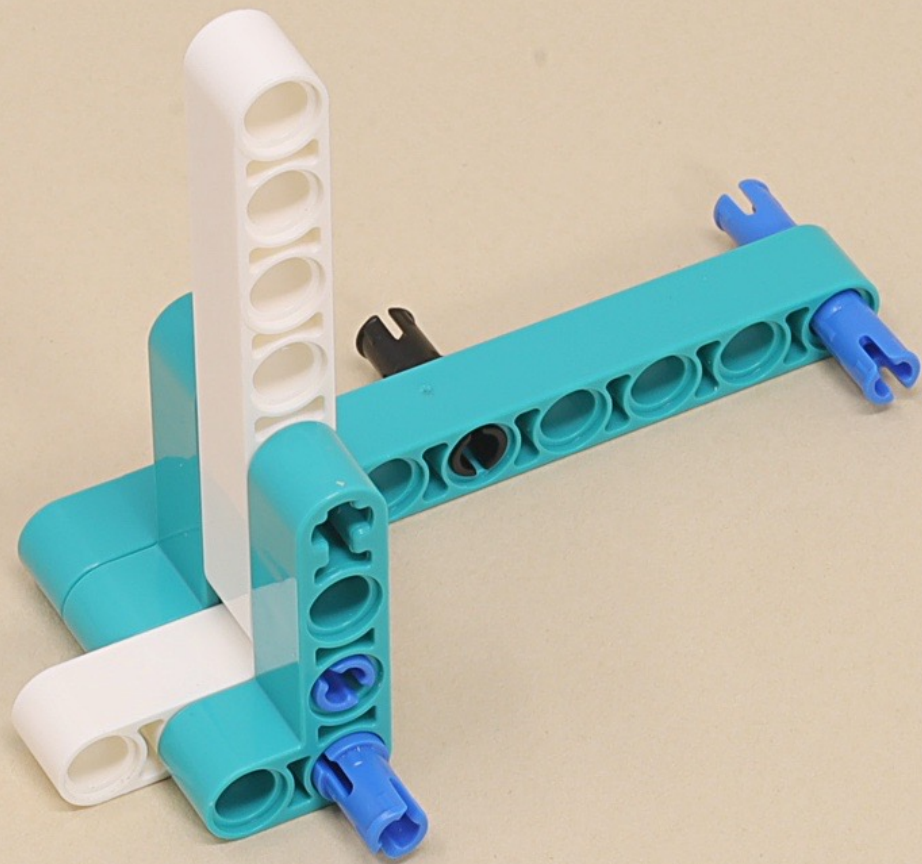


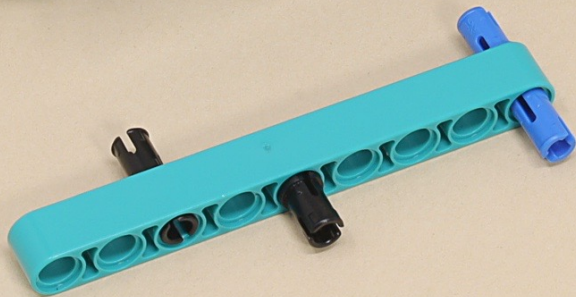
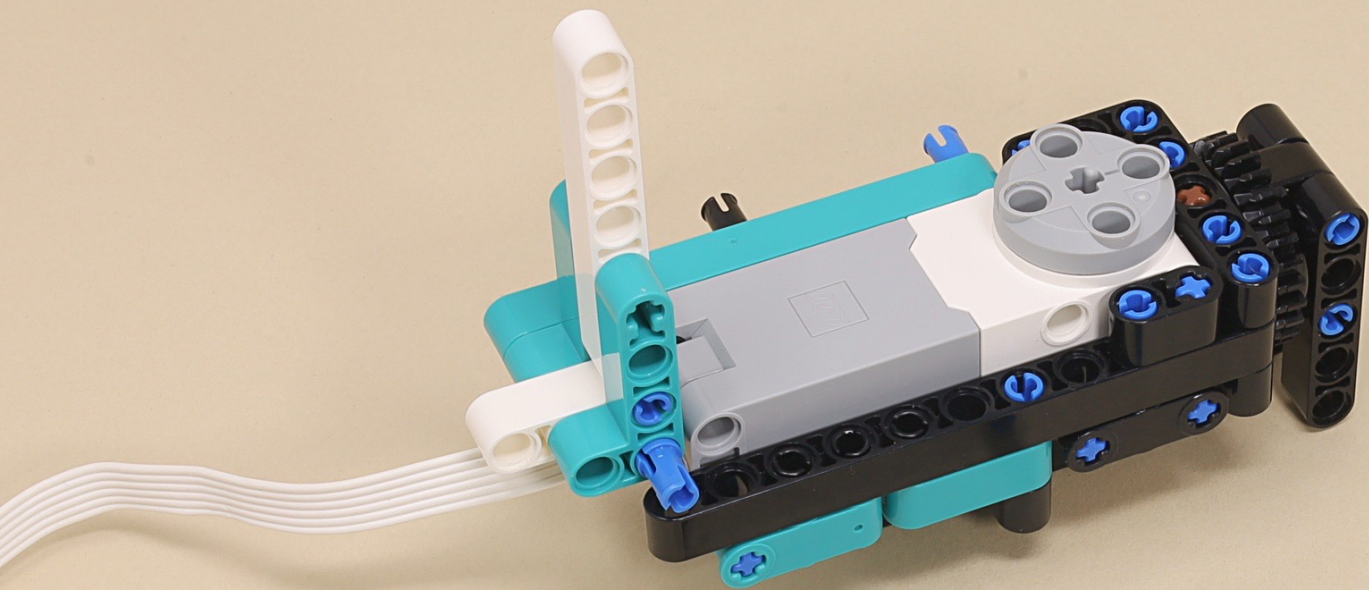




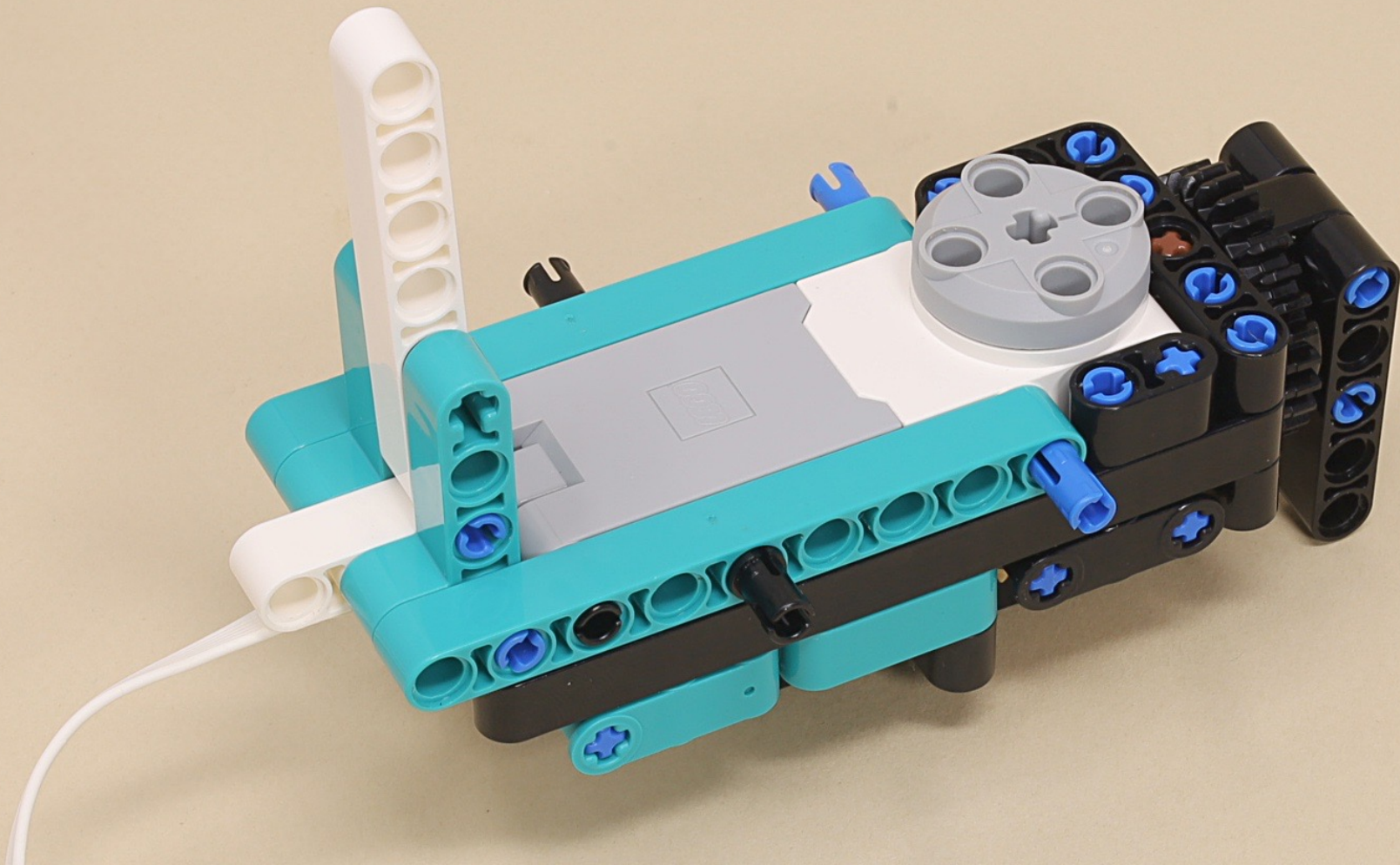


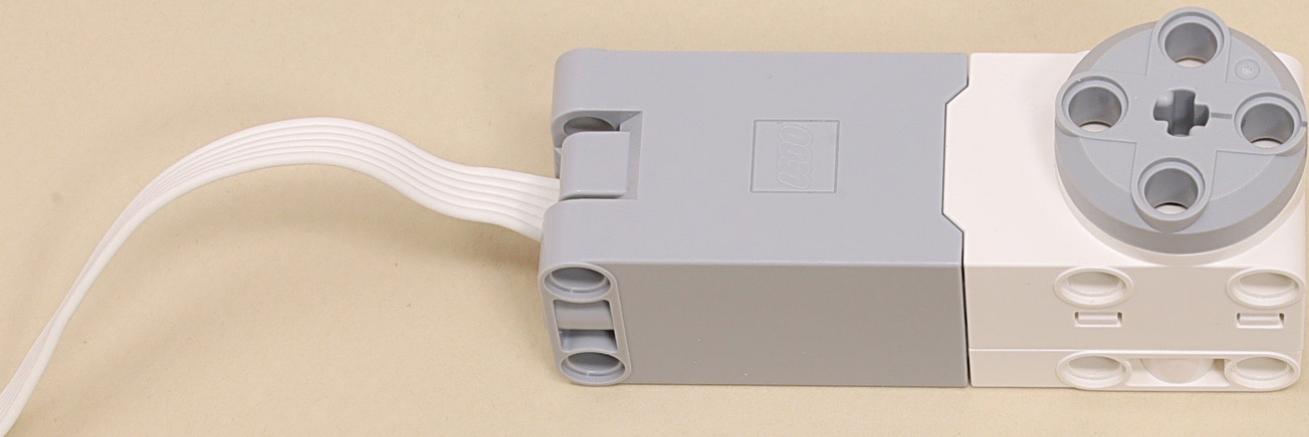




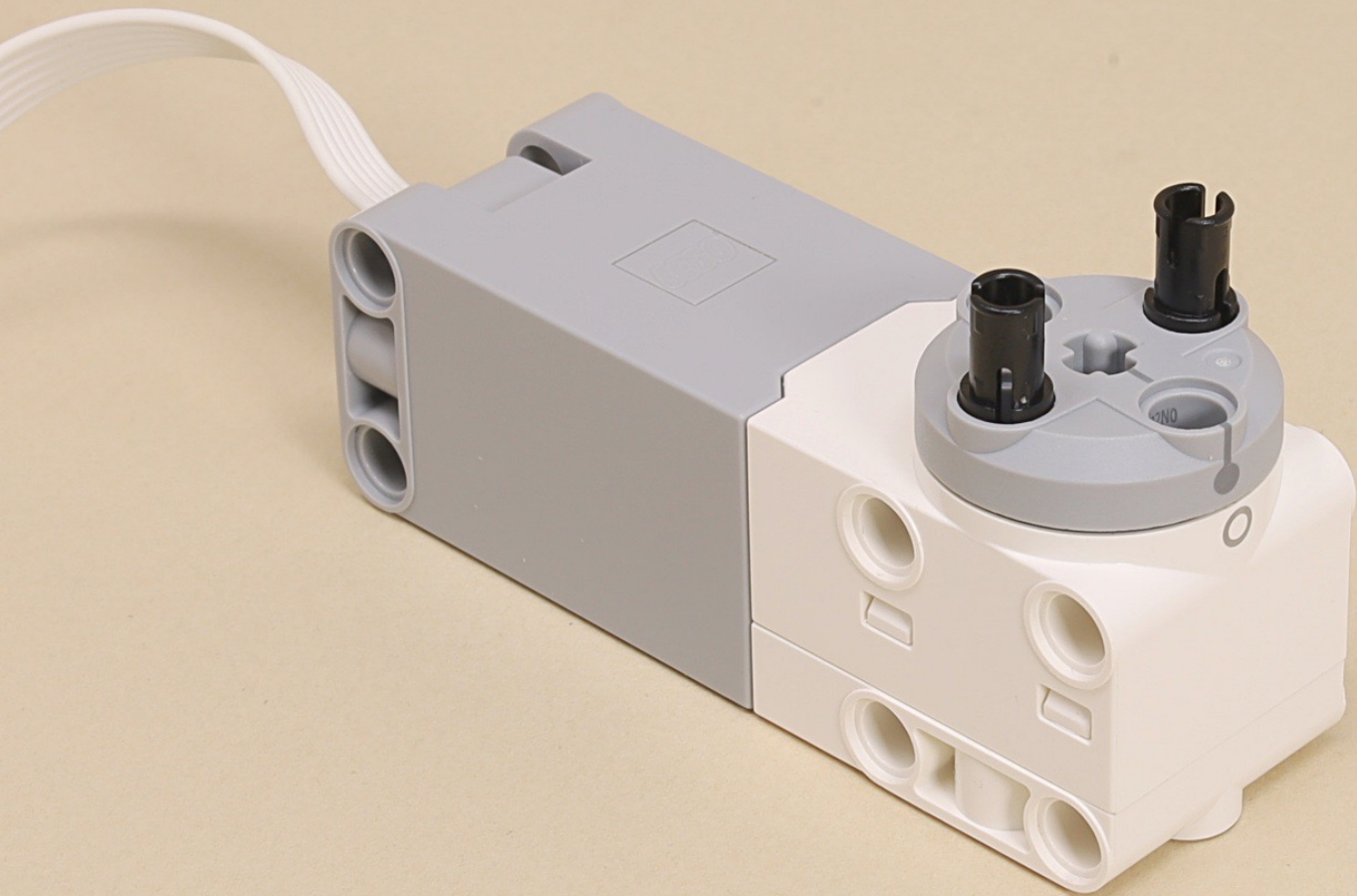


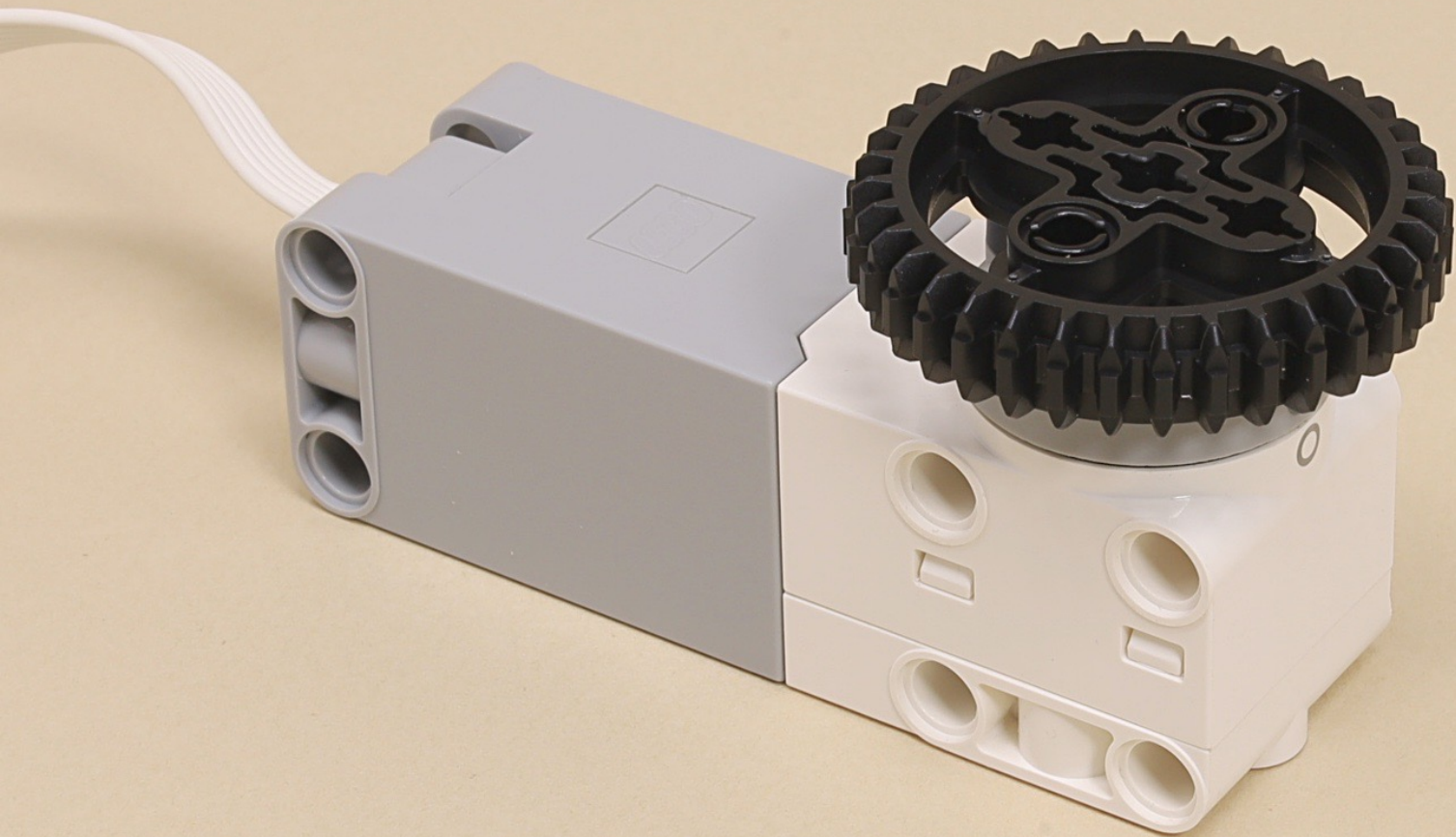
















5

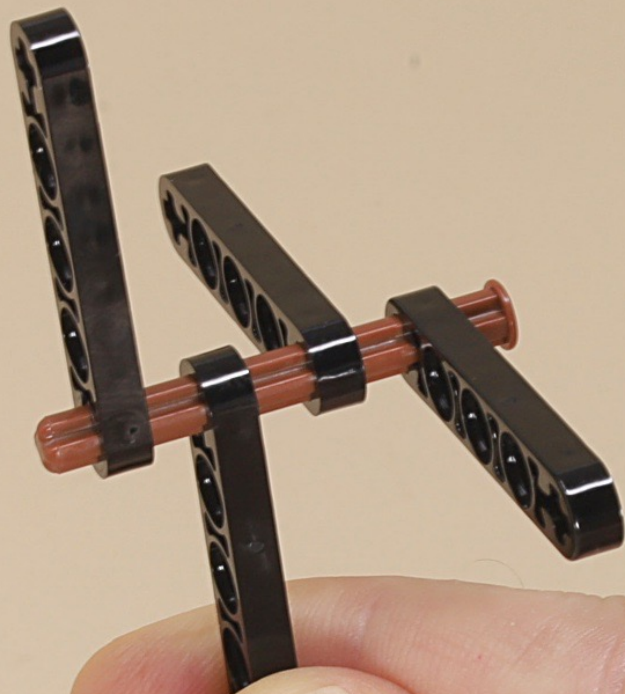


5

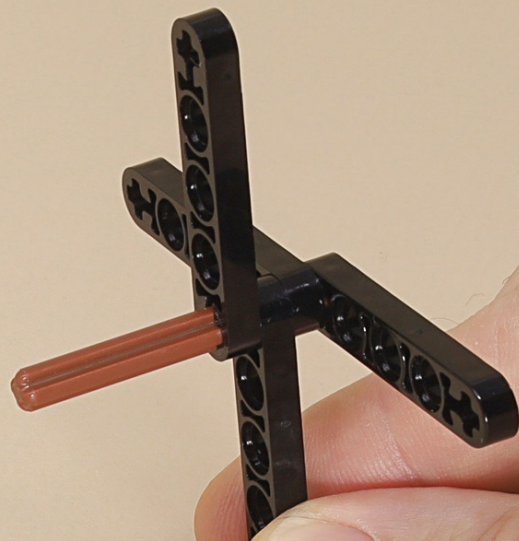


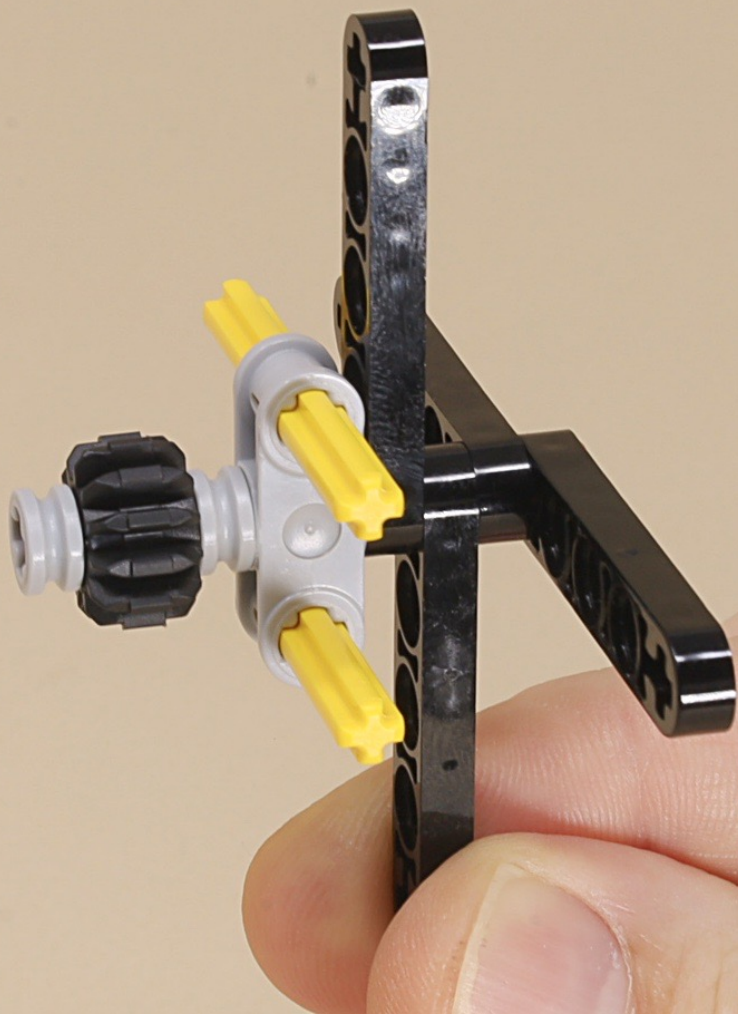
5















9



9



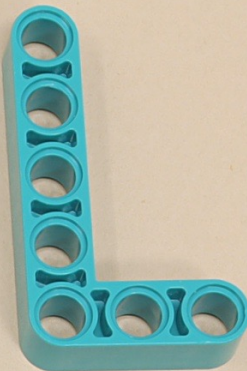
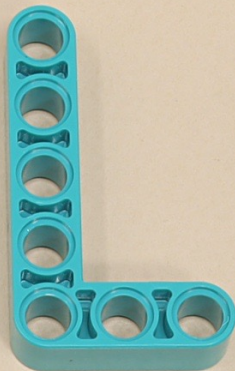
7

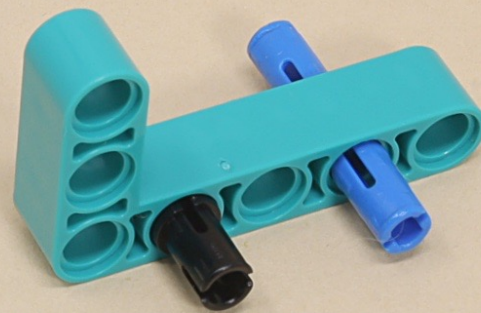
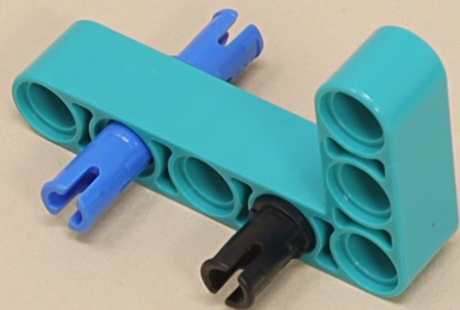


7

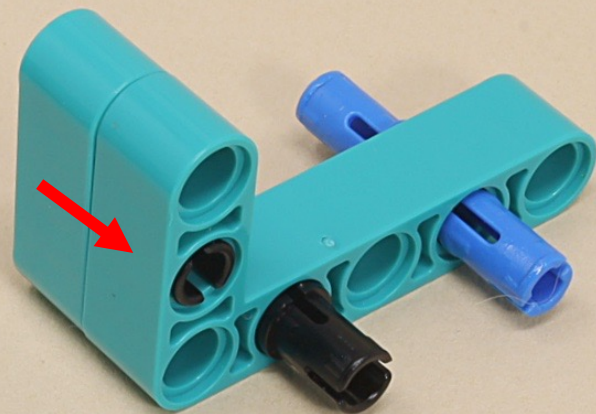
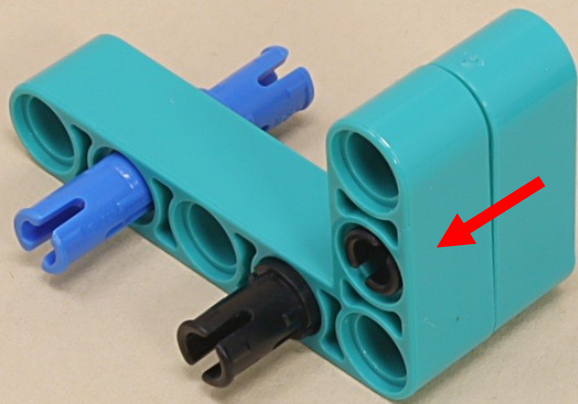


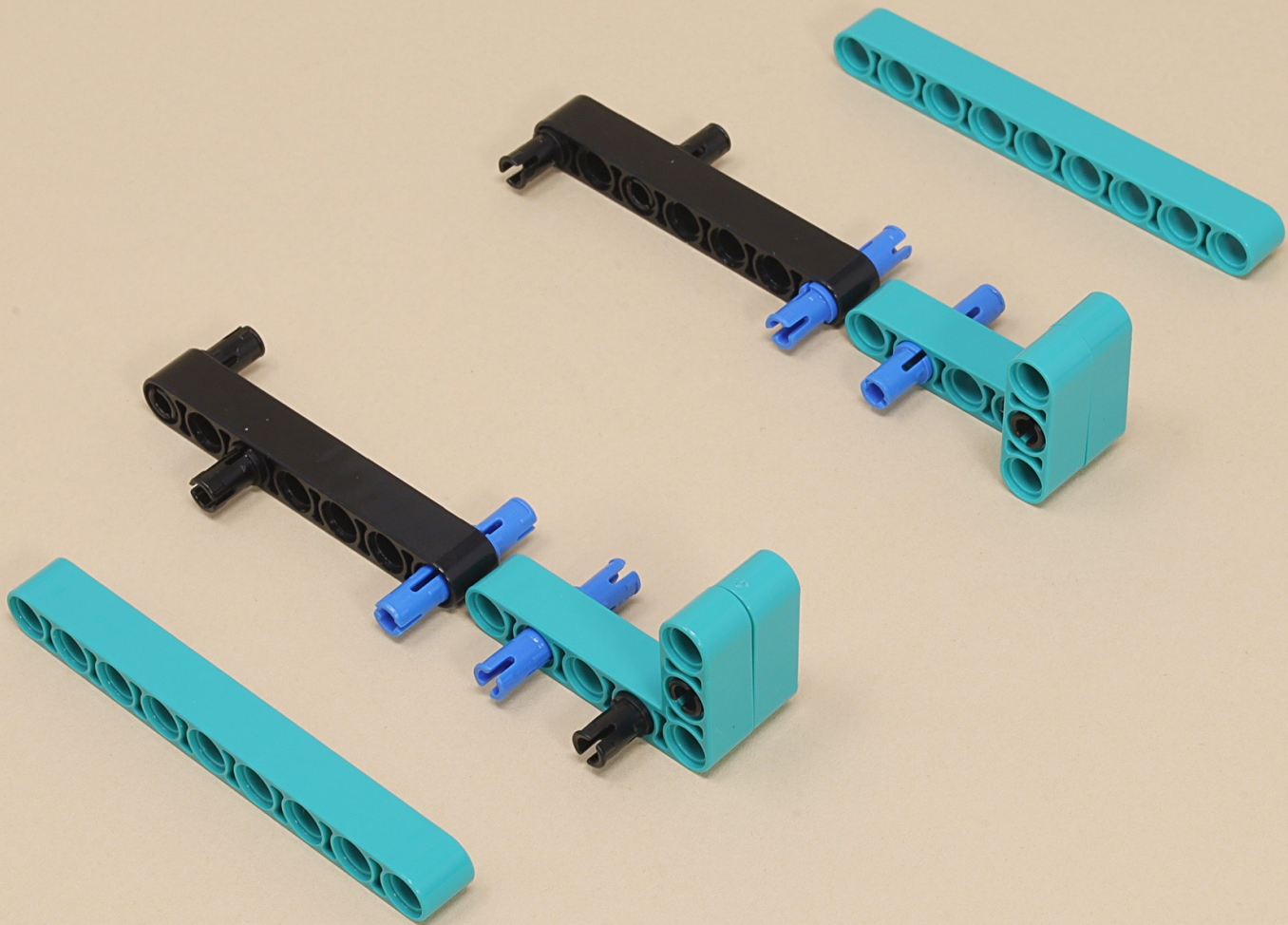
(8 x)



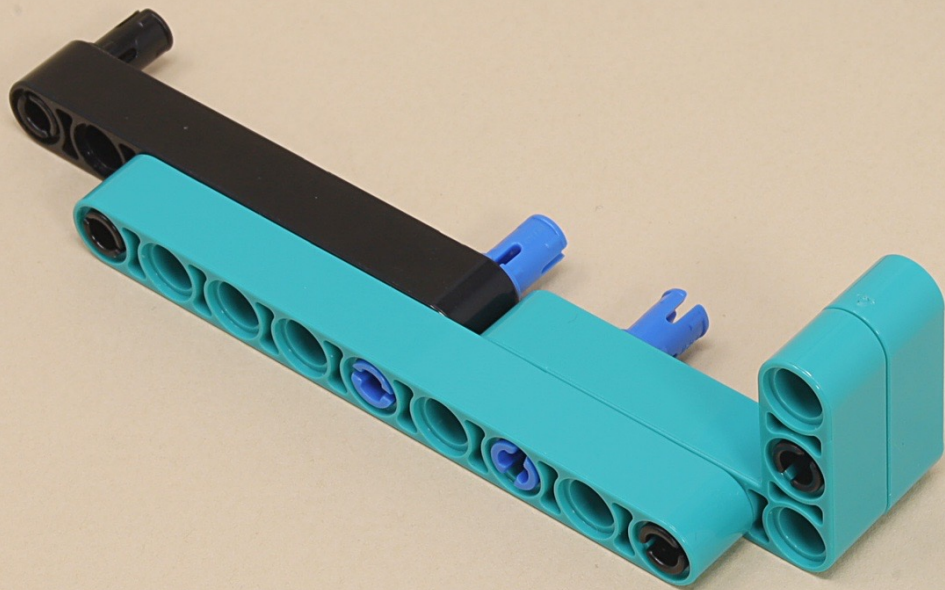
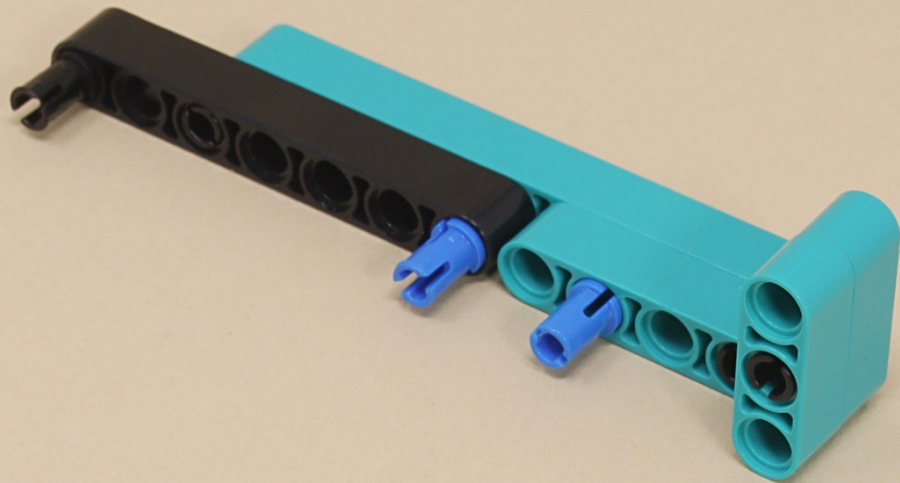


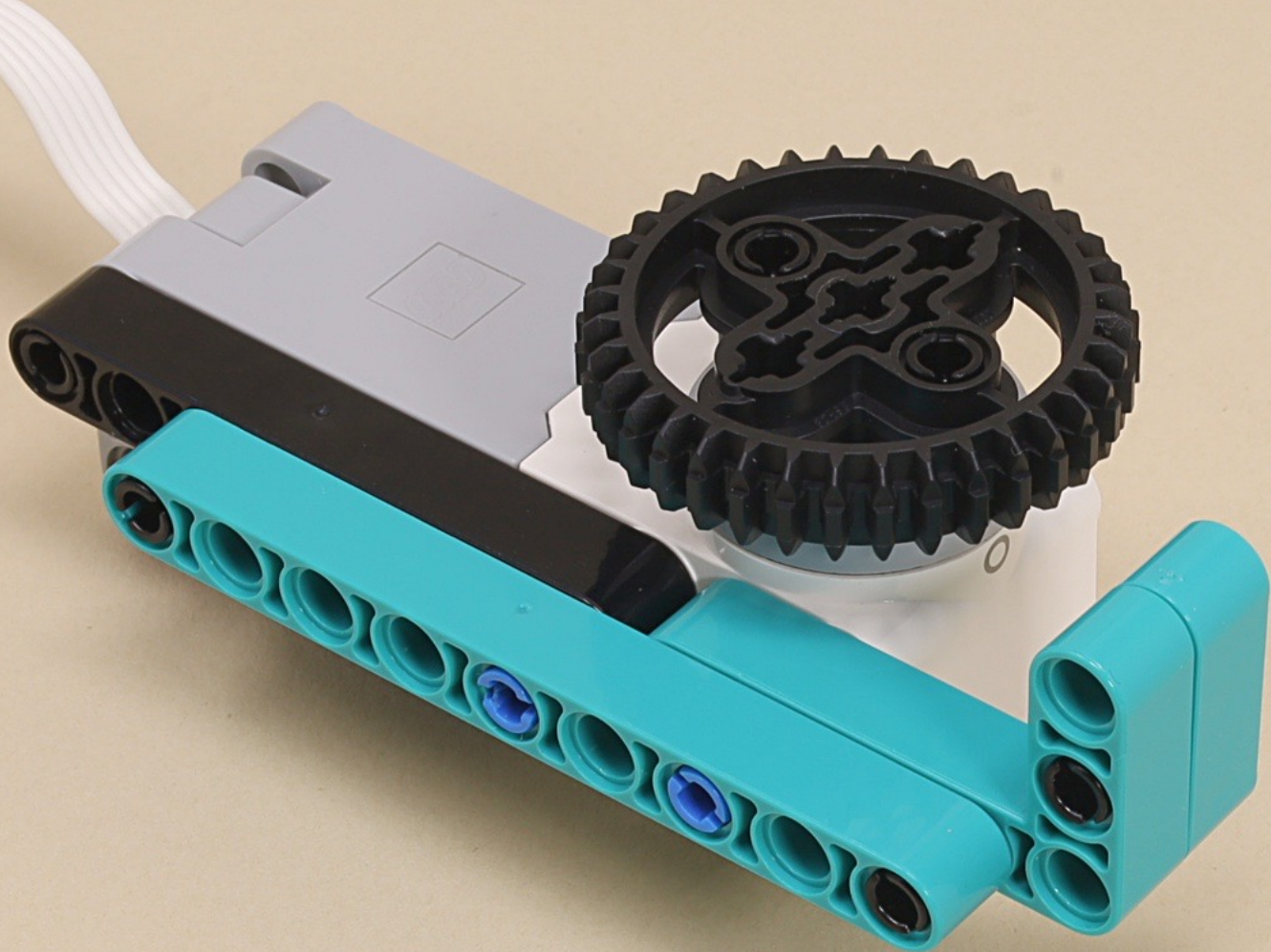




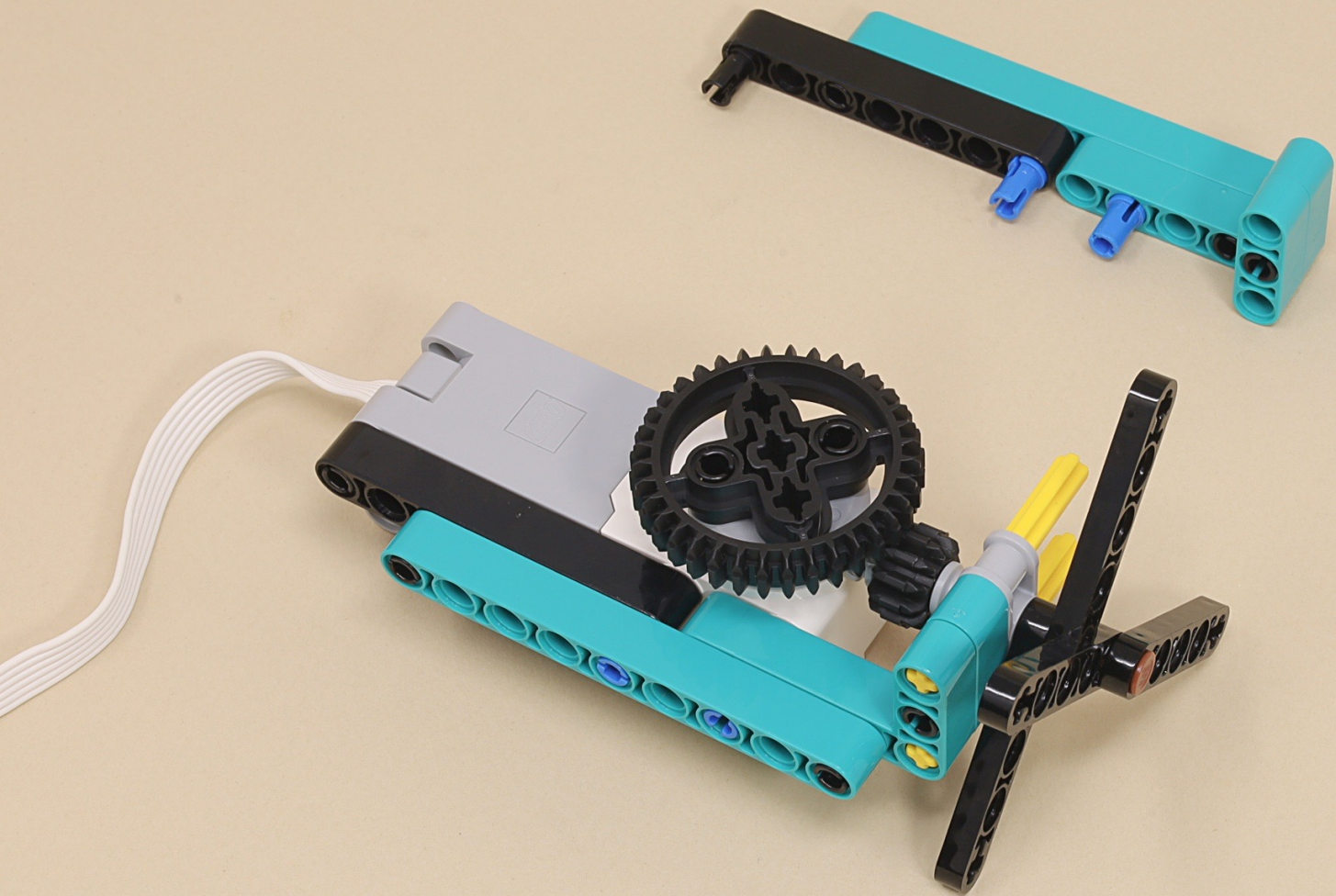


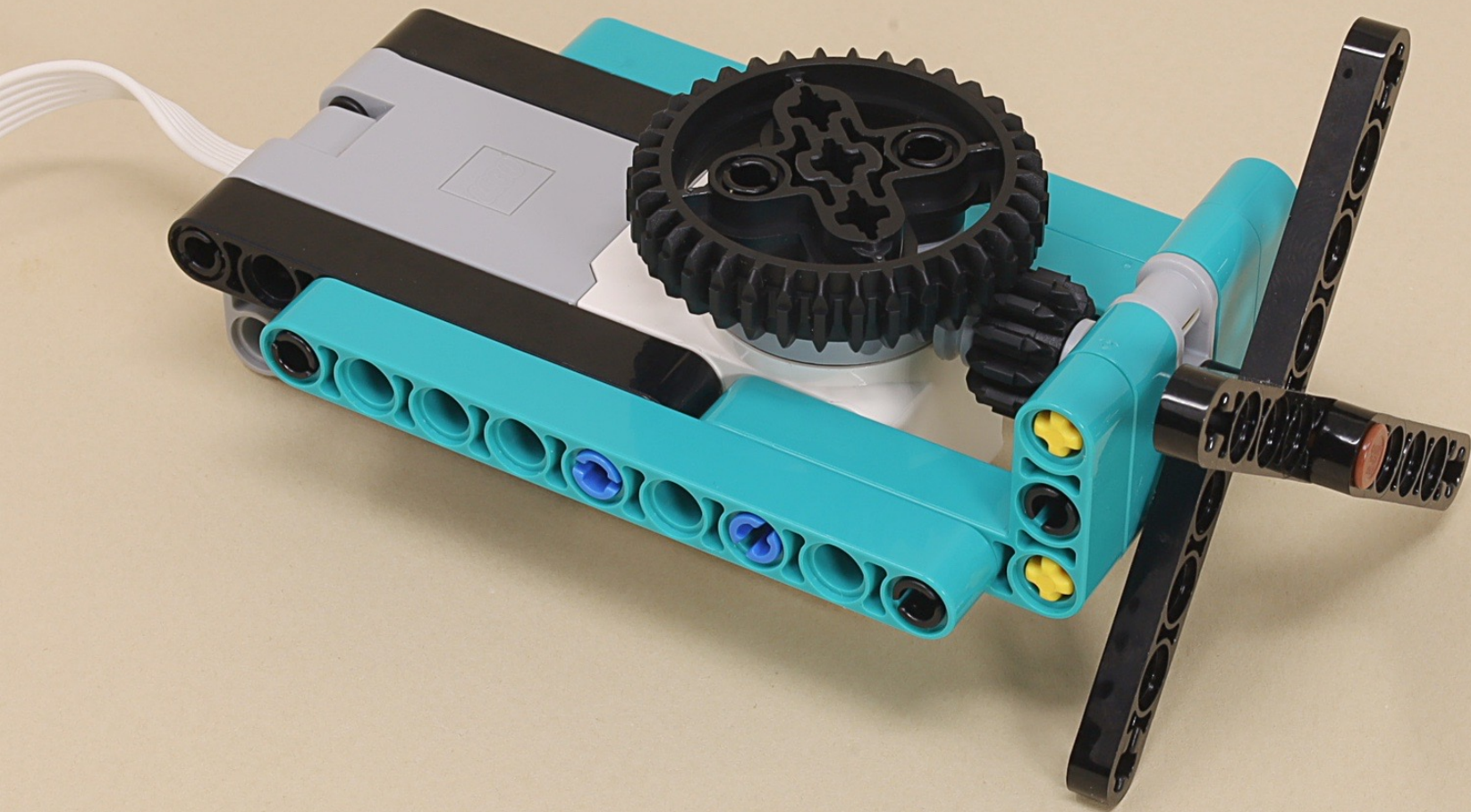
















13



13

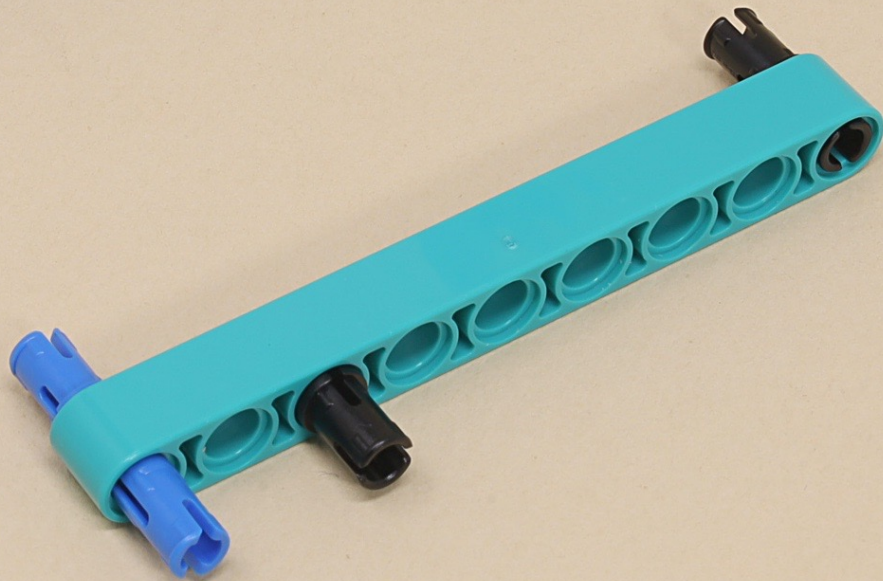
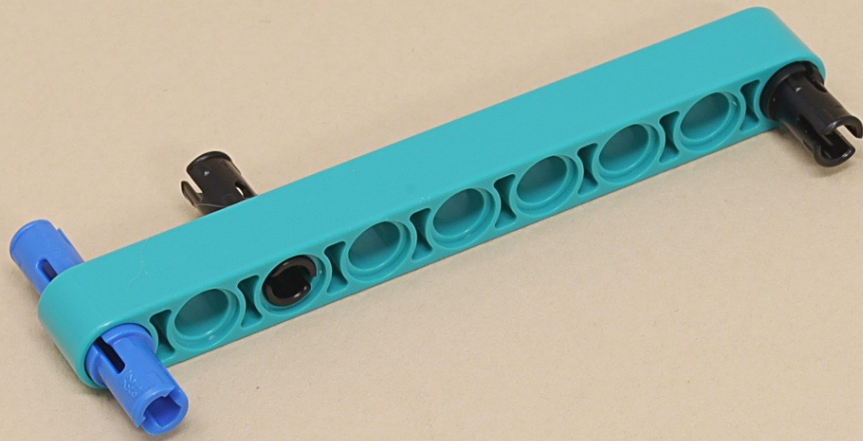


9

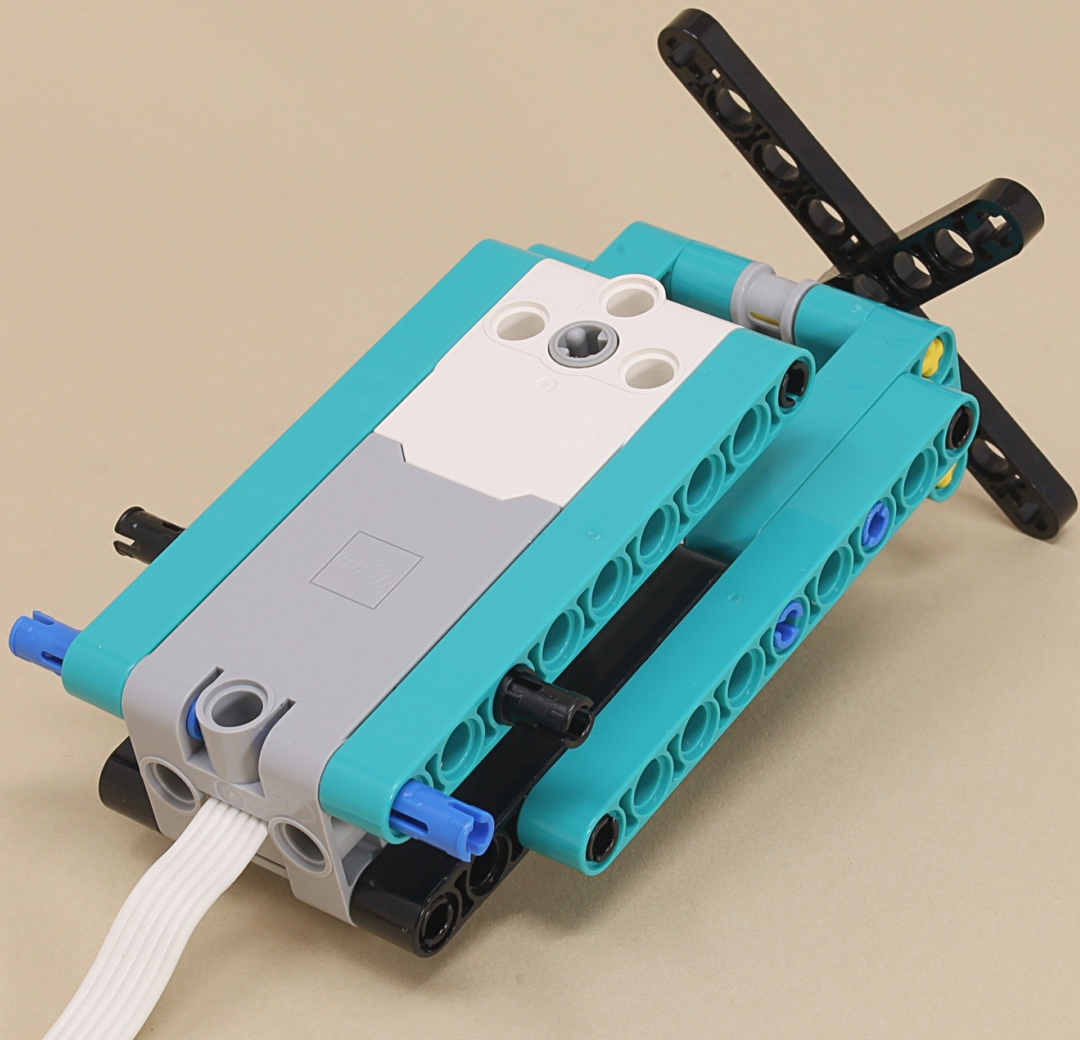


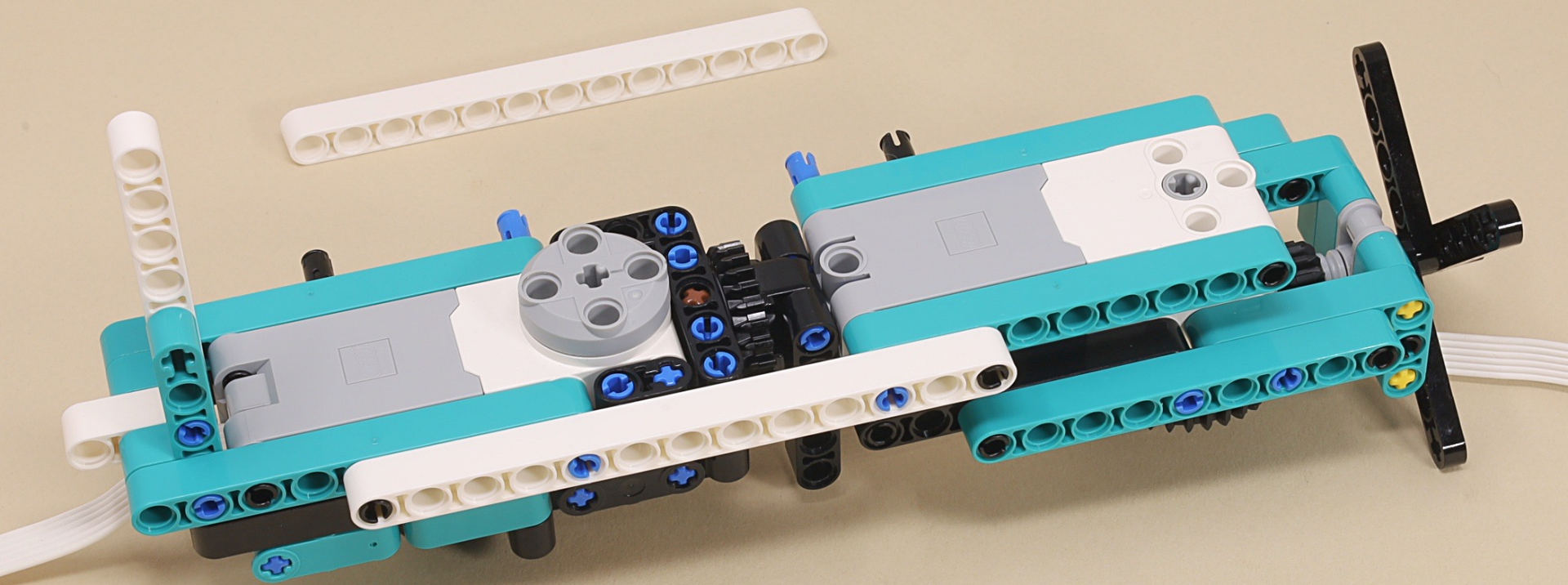
9



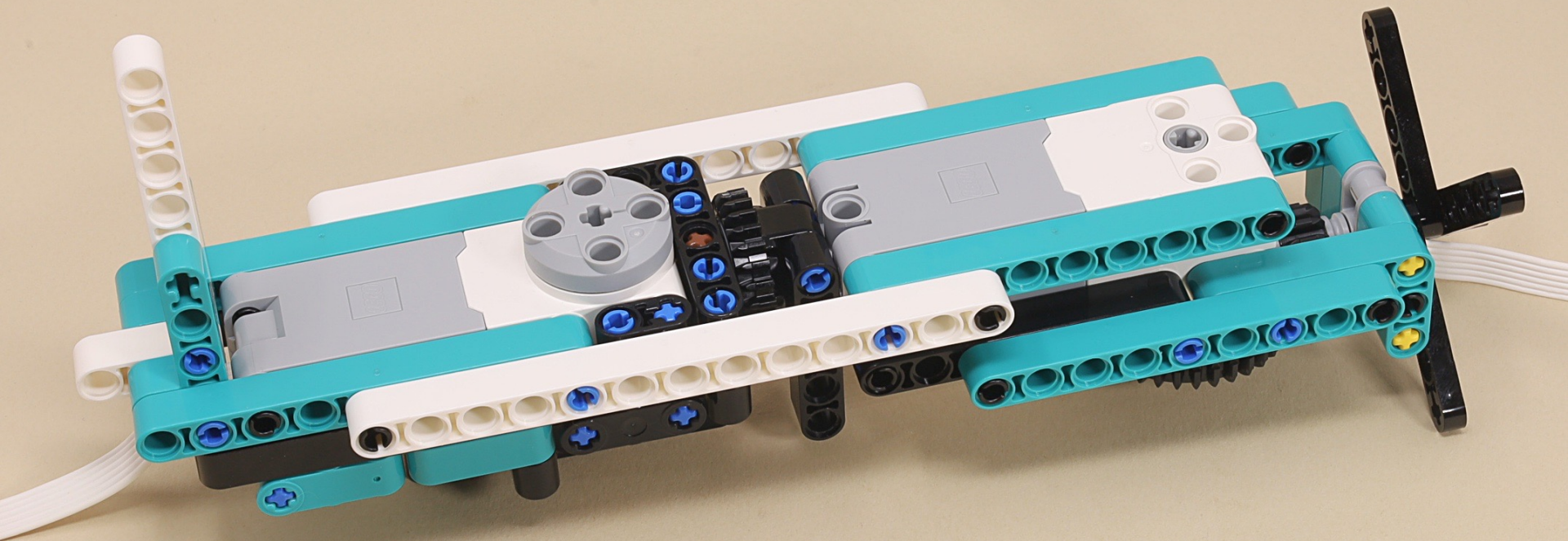














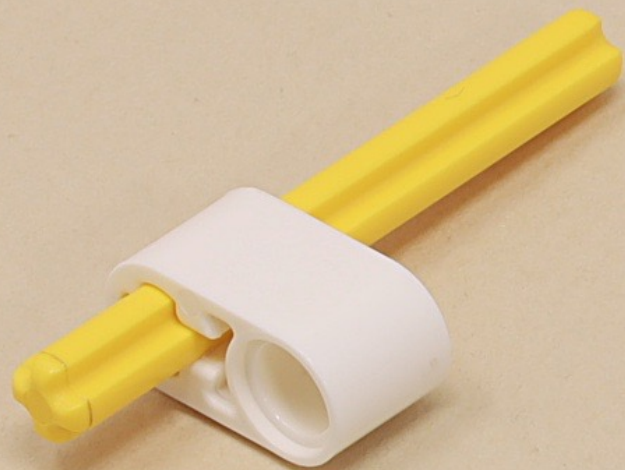
5

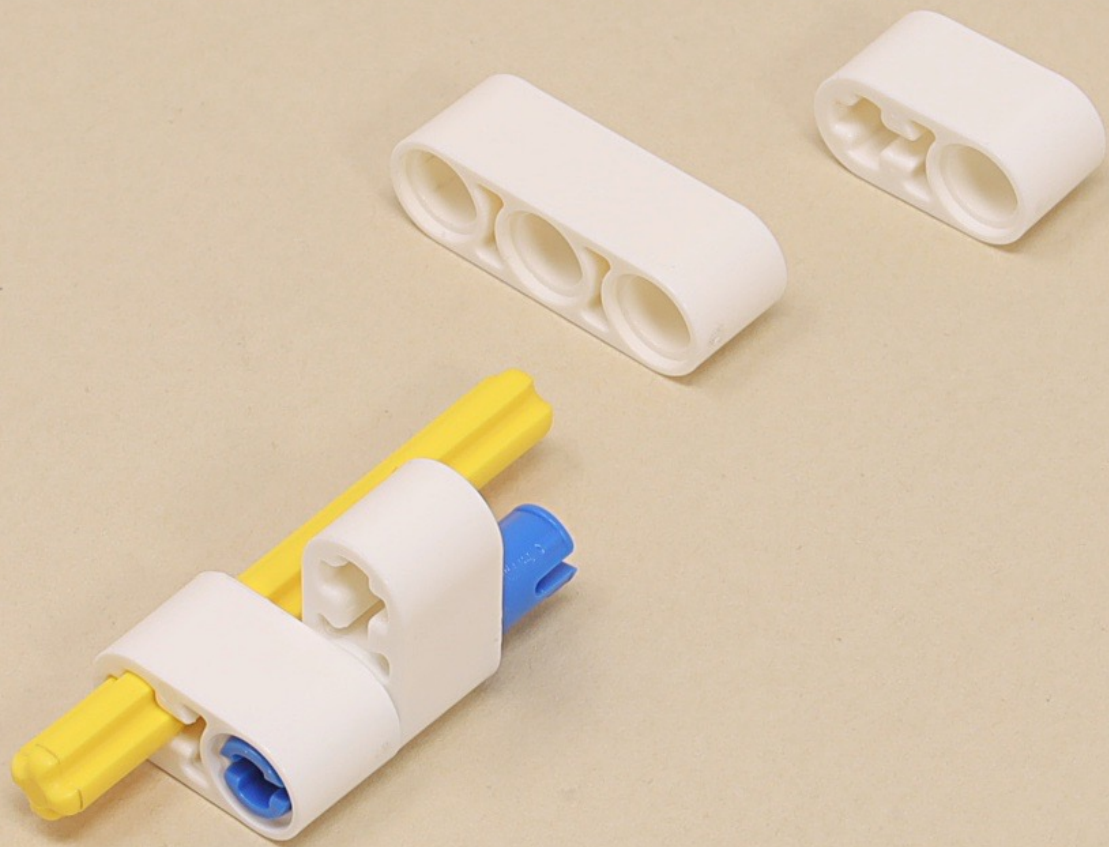


5

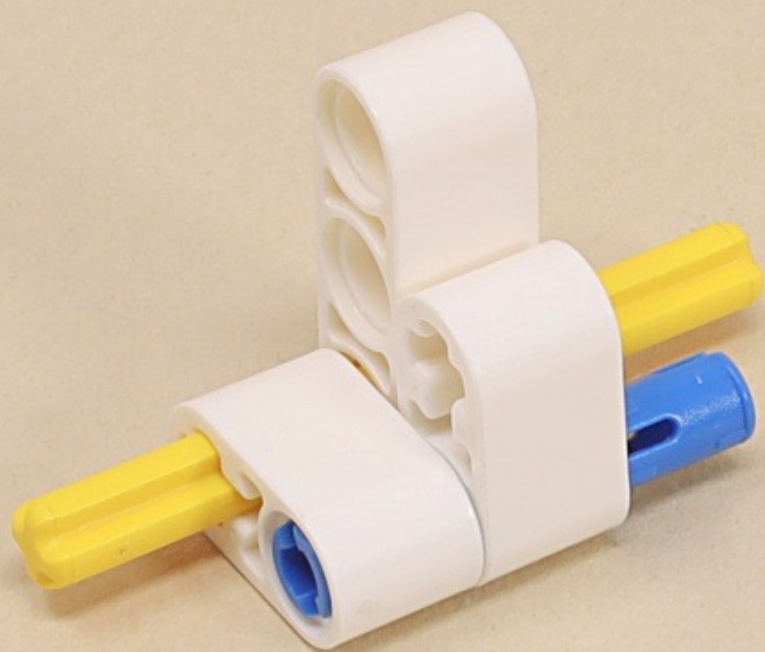


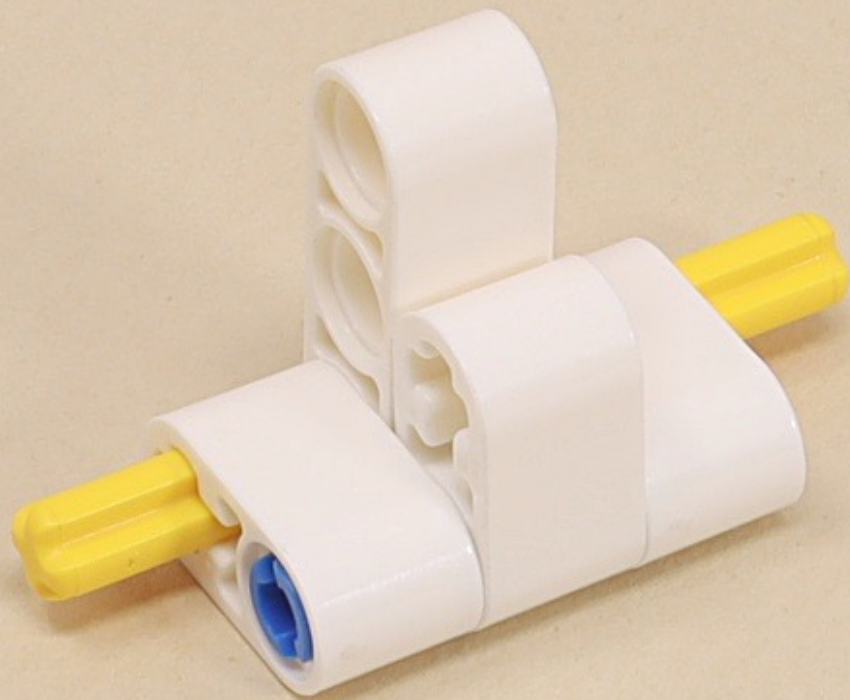




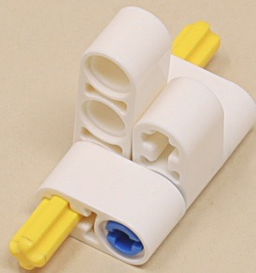


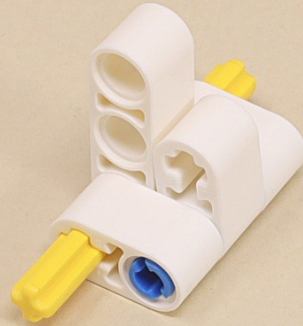
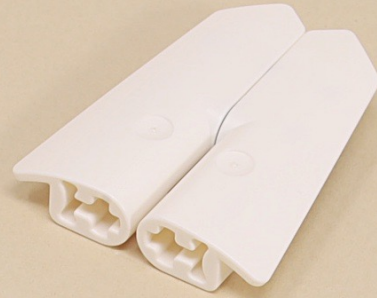




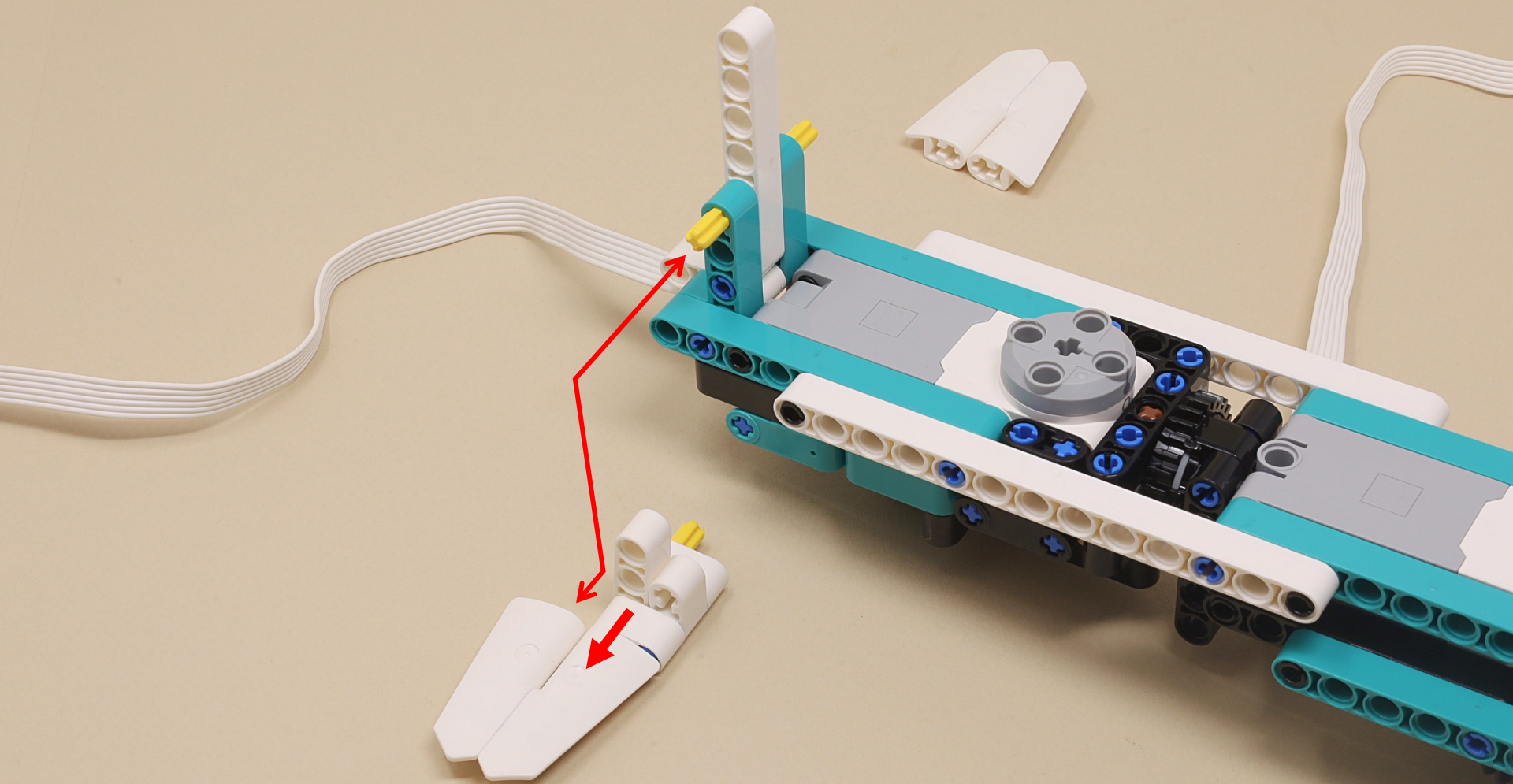


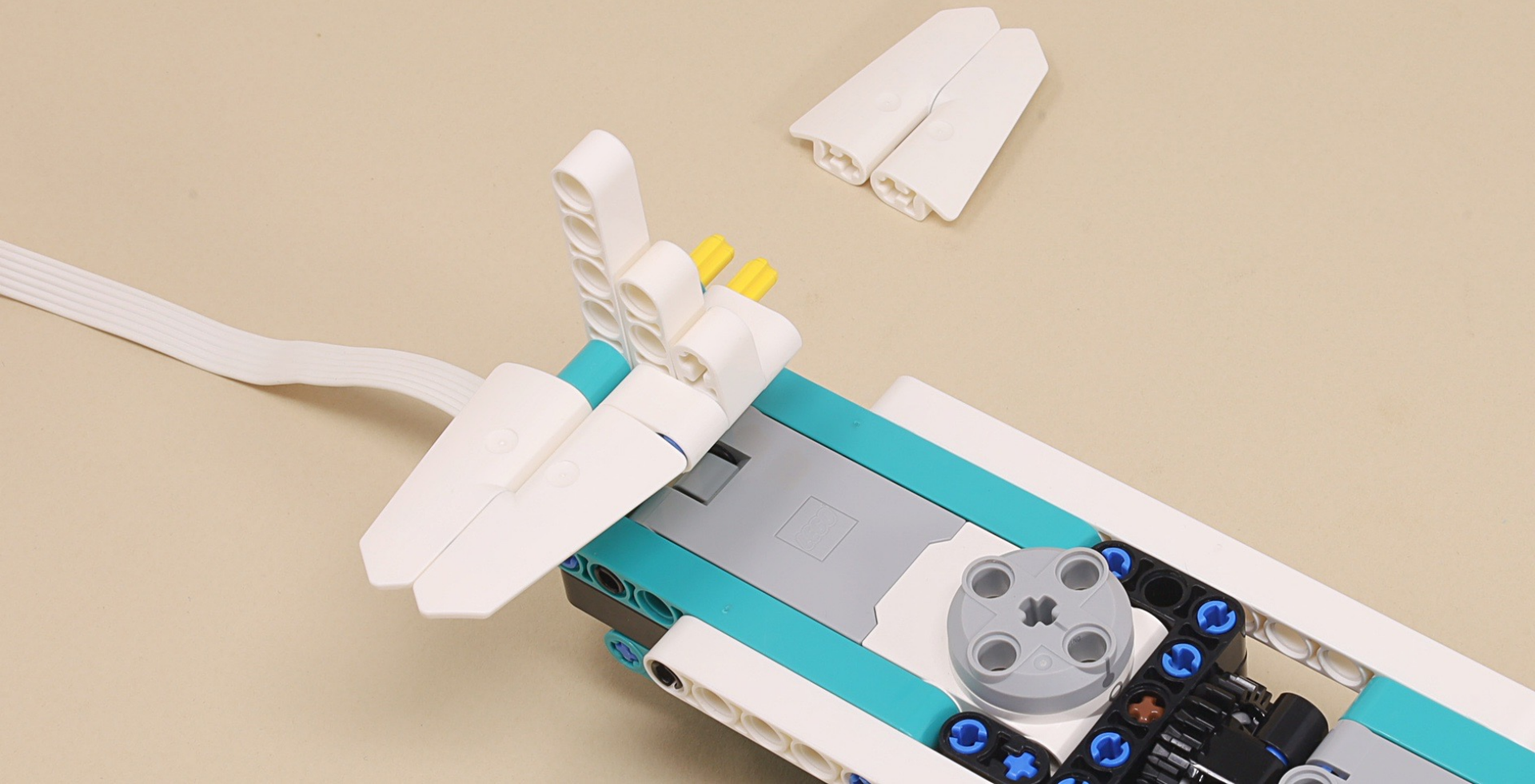




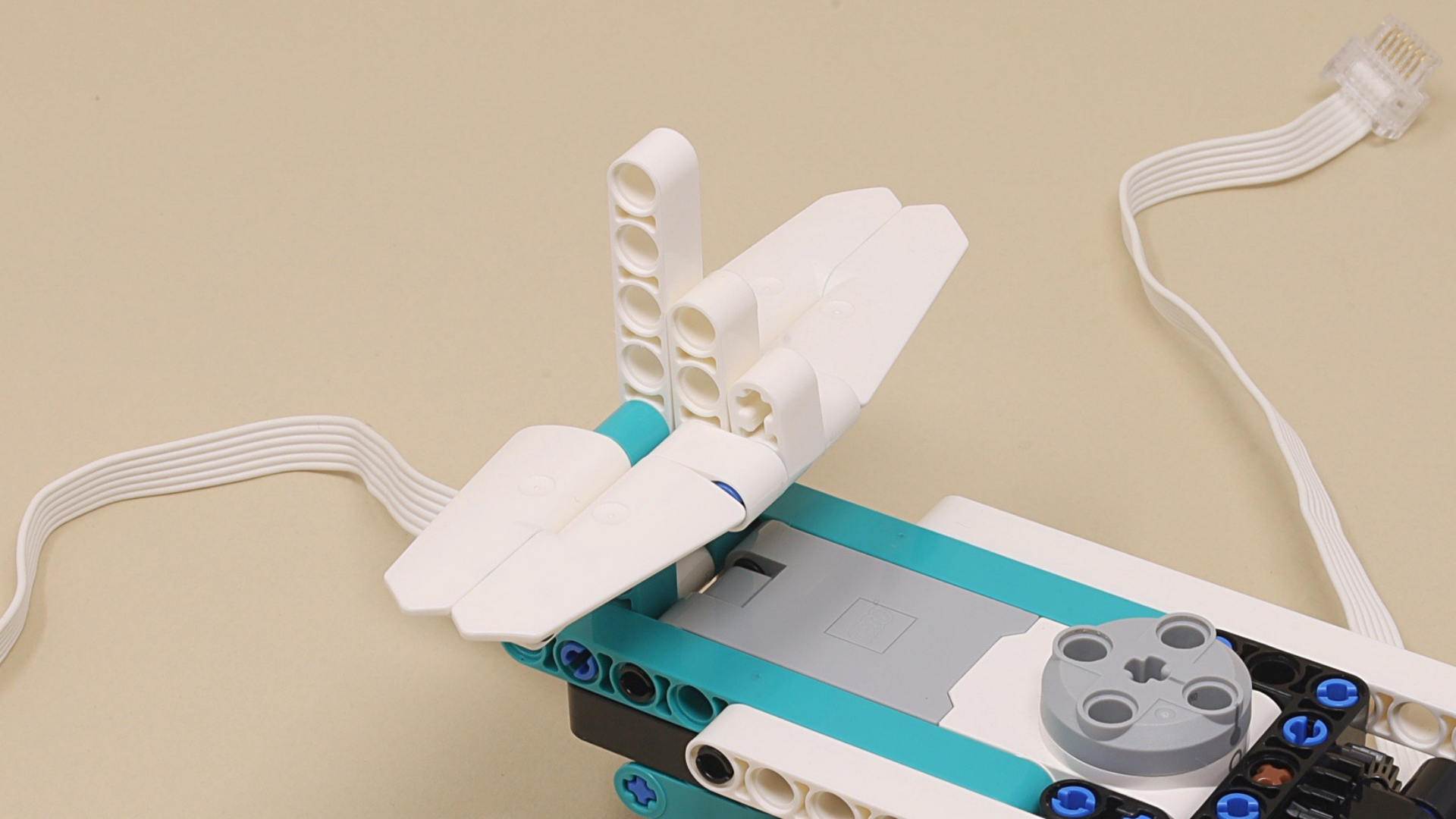














(10 x)













