

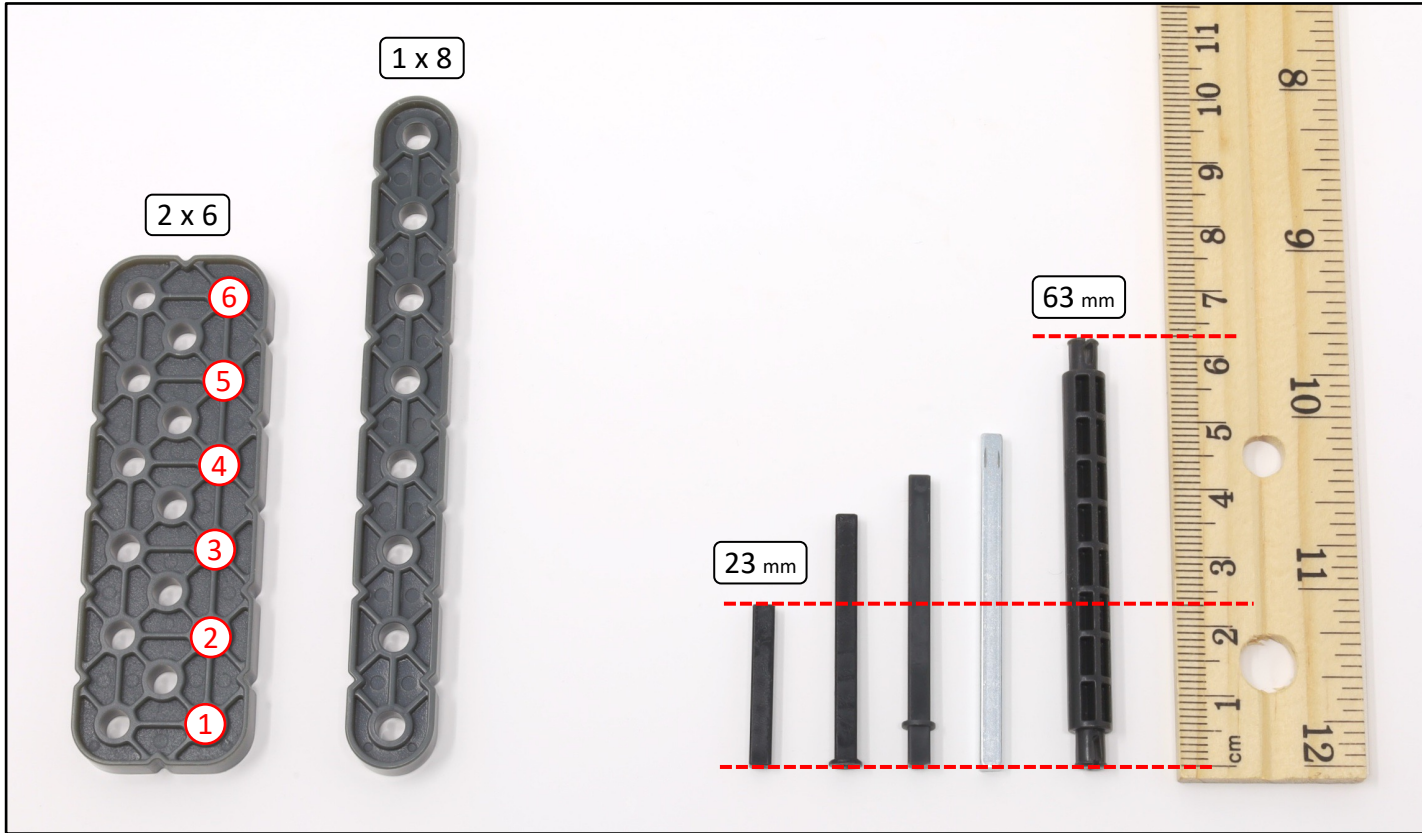
Castor Bot



Scroll for
building
instructions



Parts Sizing Guide

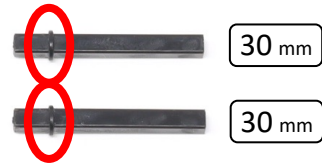
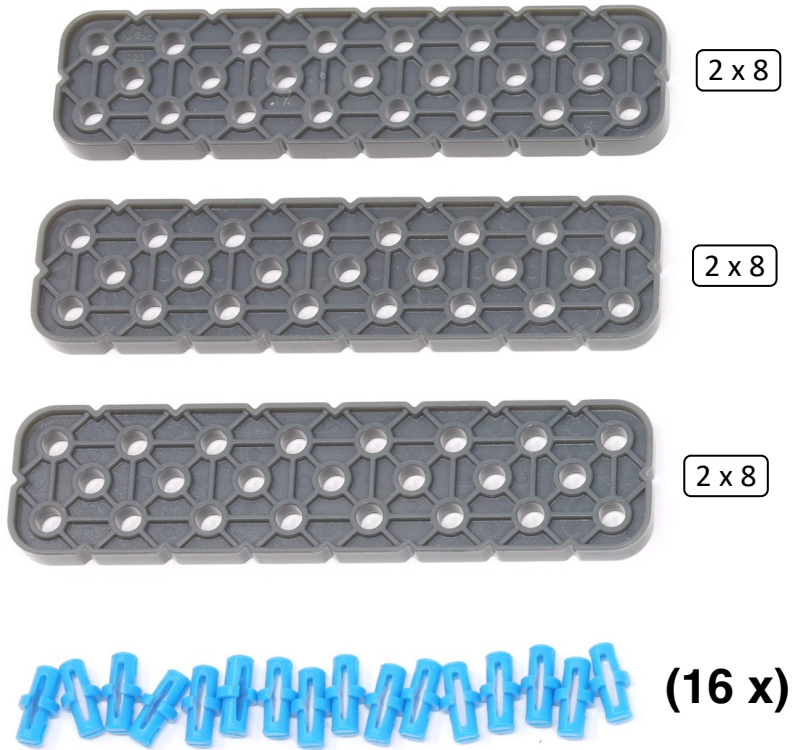


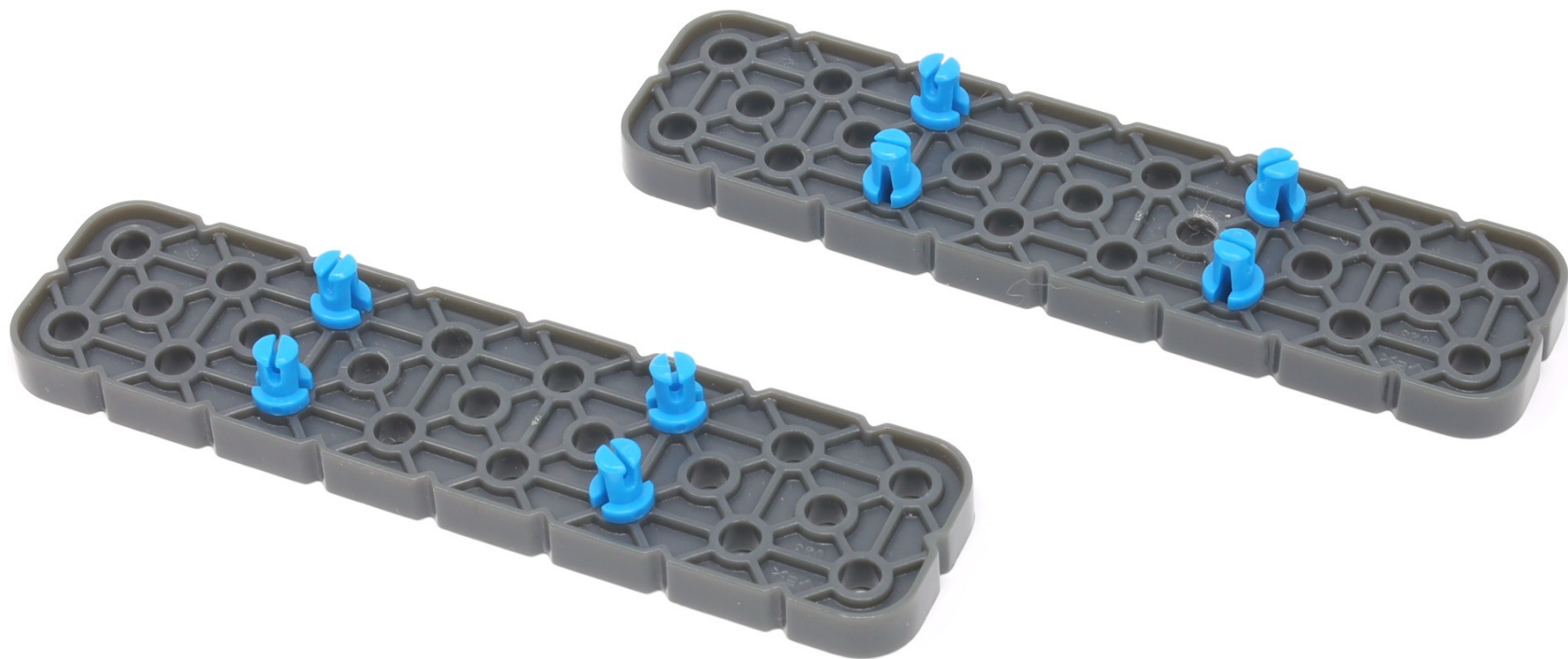
Count holes on beams

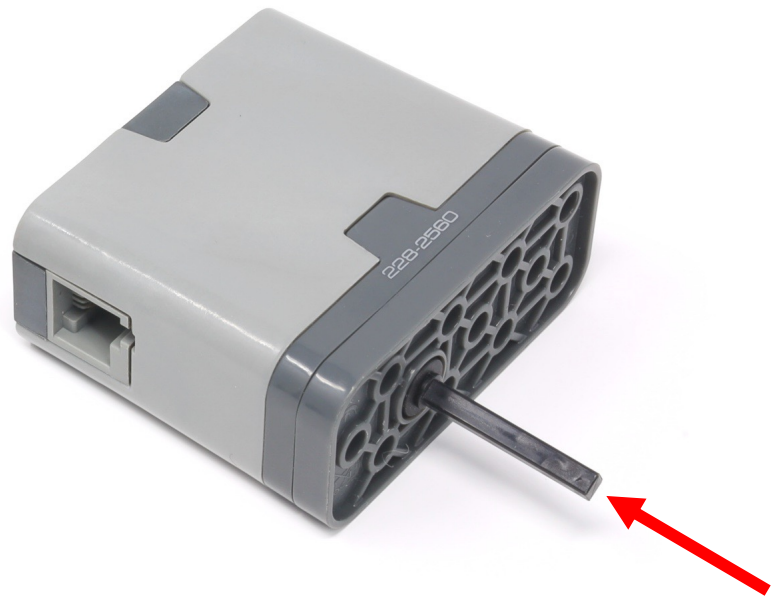
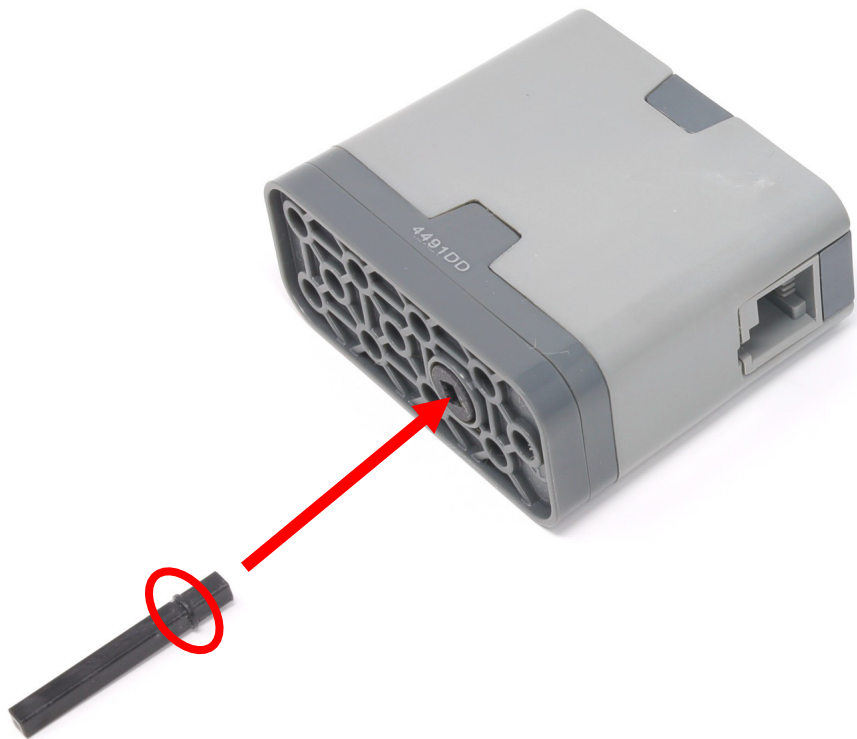
Use a metric ruler for axles and standoffs

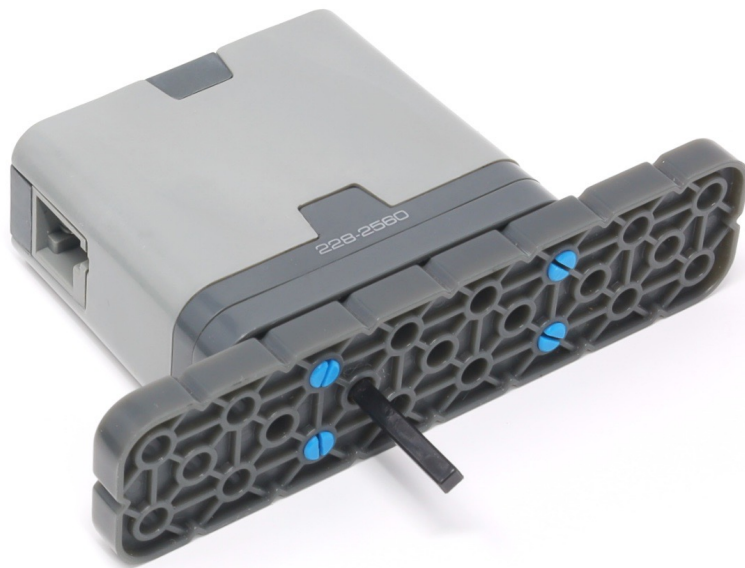


Watch orientation
of connectors



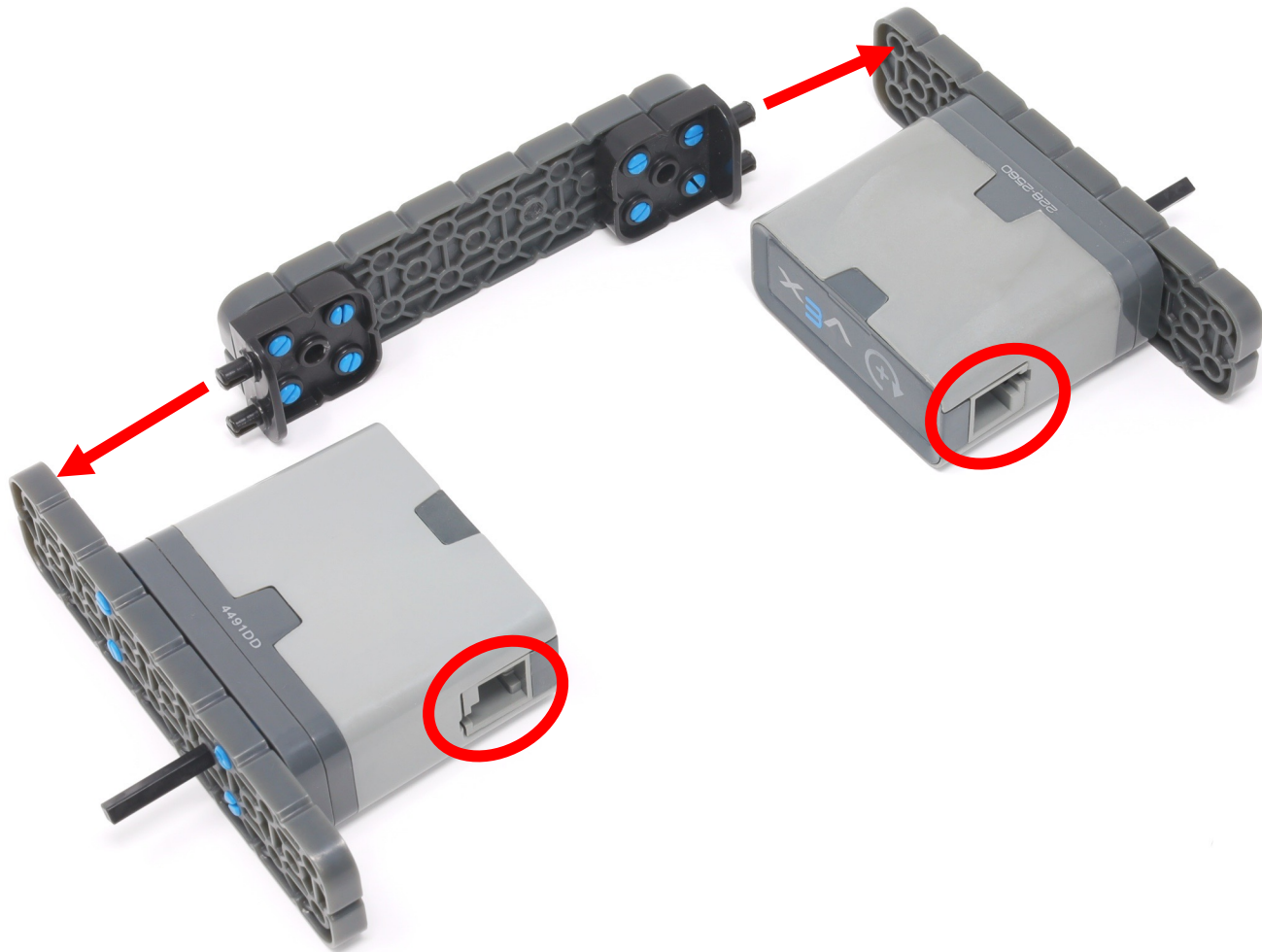


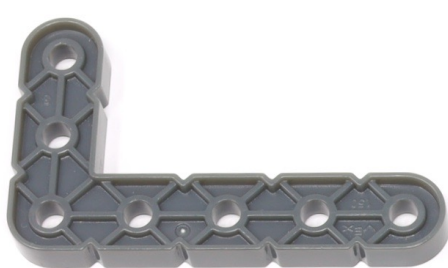












2 x 10



1 x 8



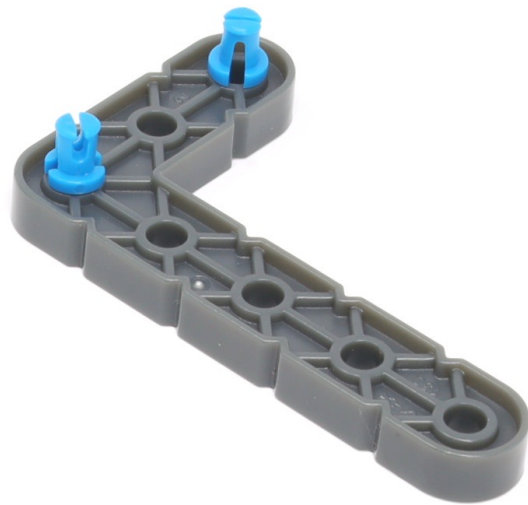
25 mm



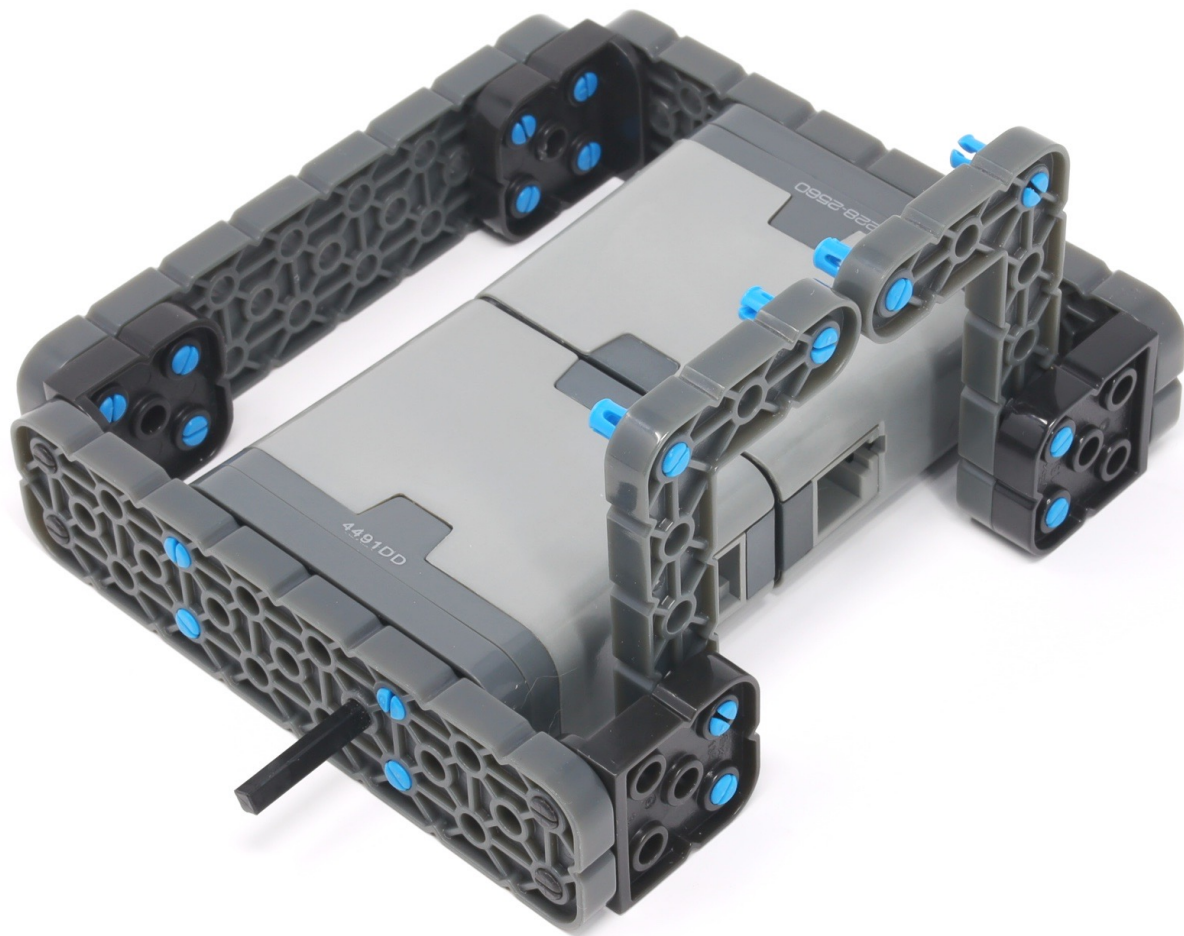
(12 x)

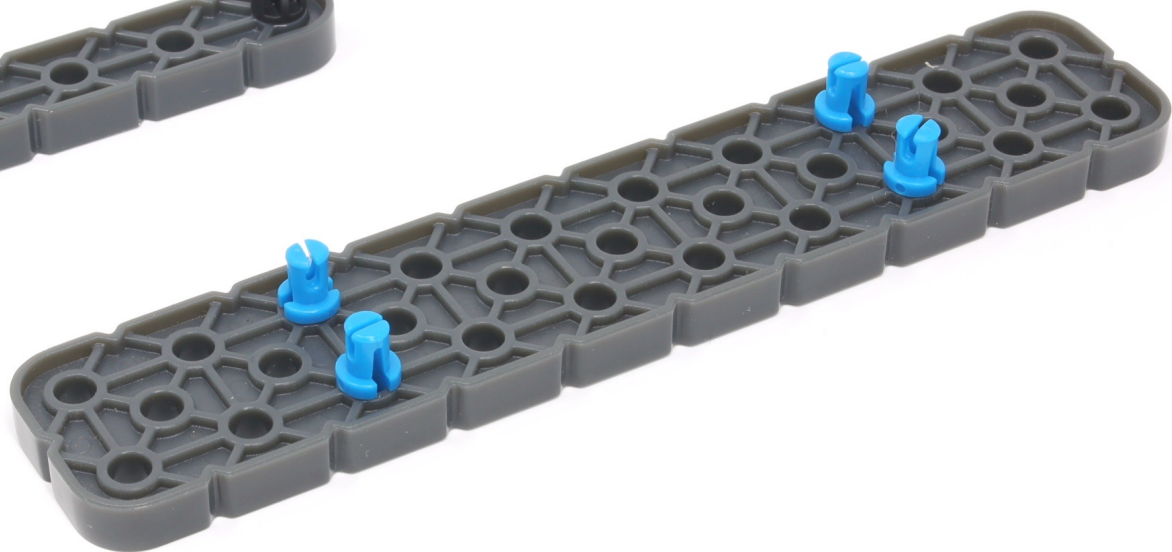


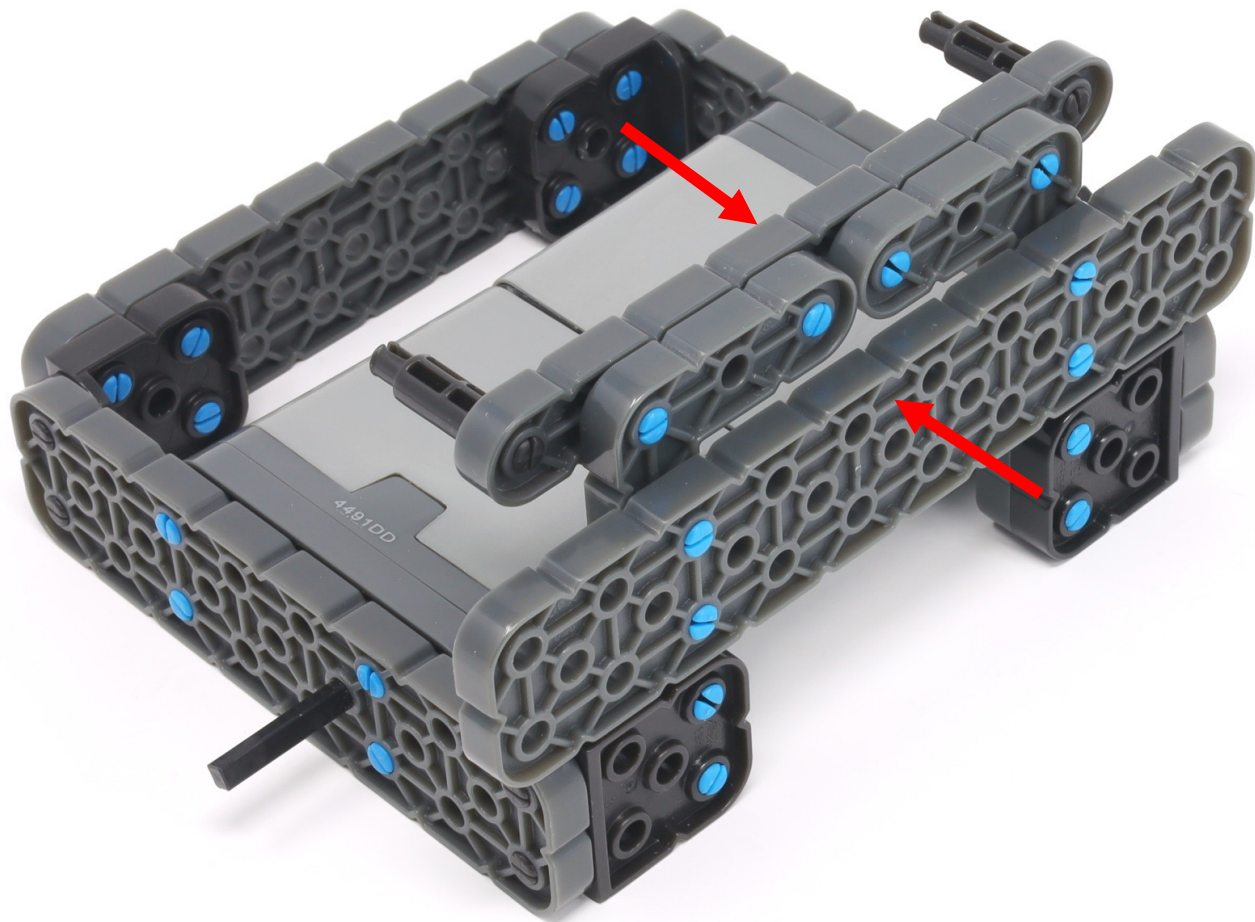
25 mm







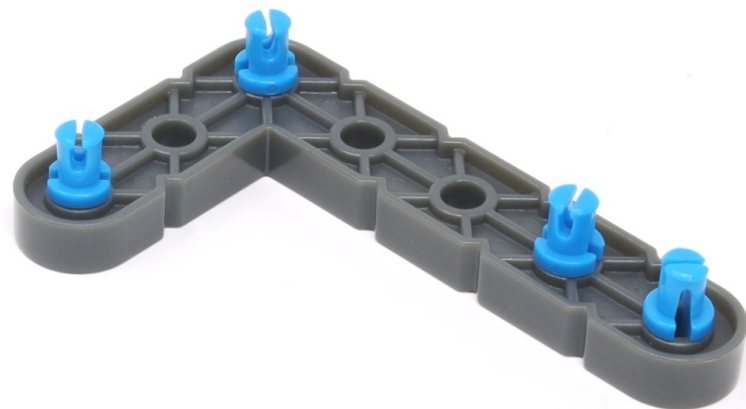
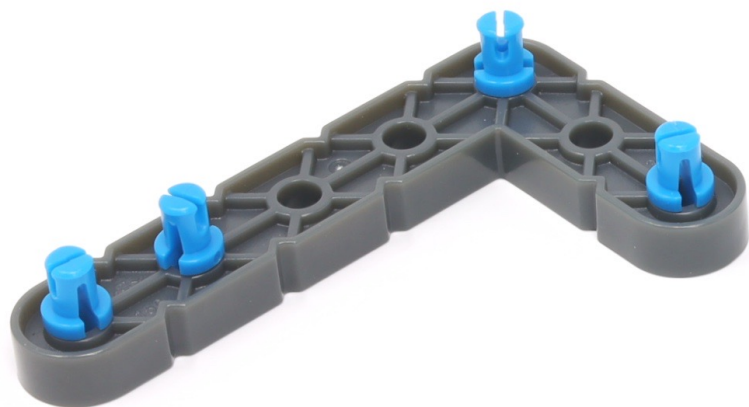


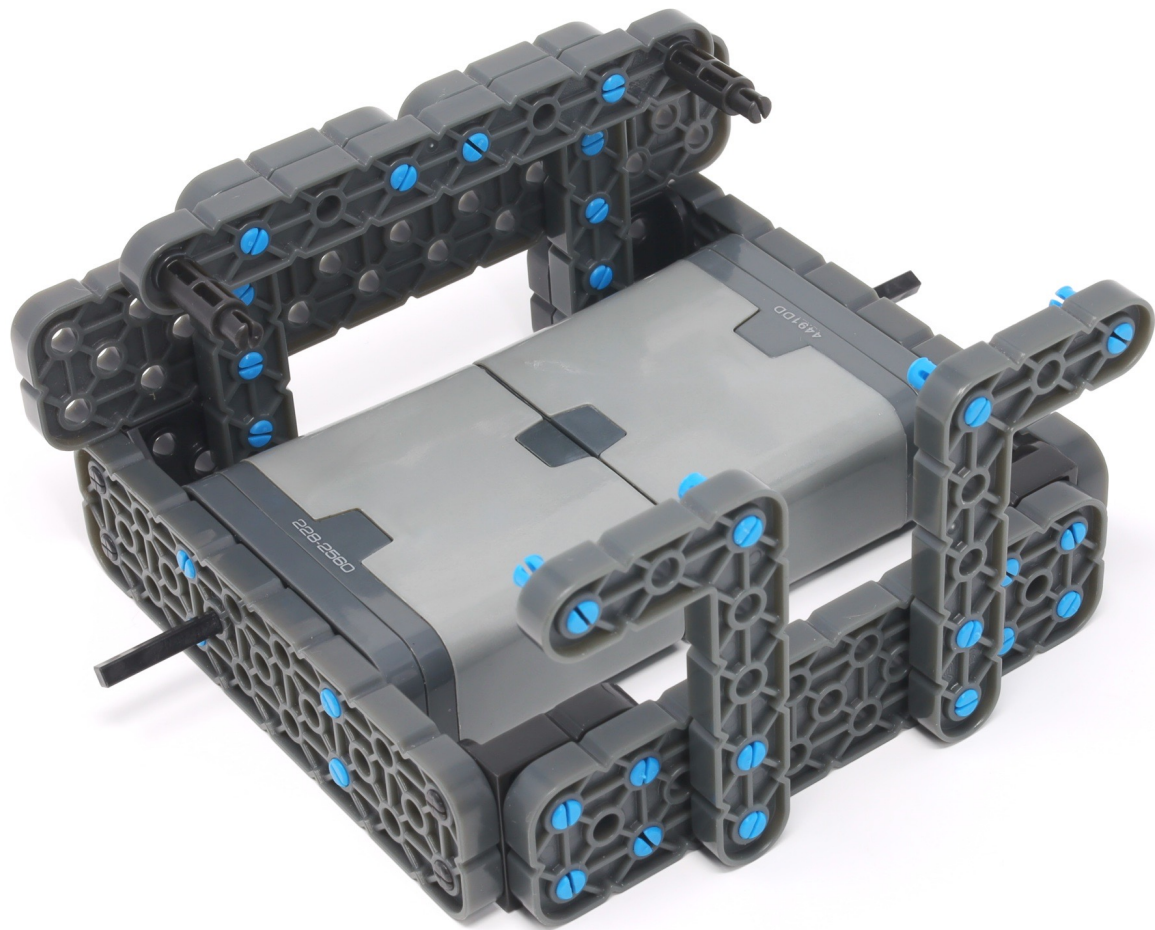




(12 x)

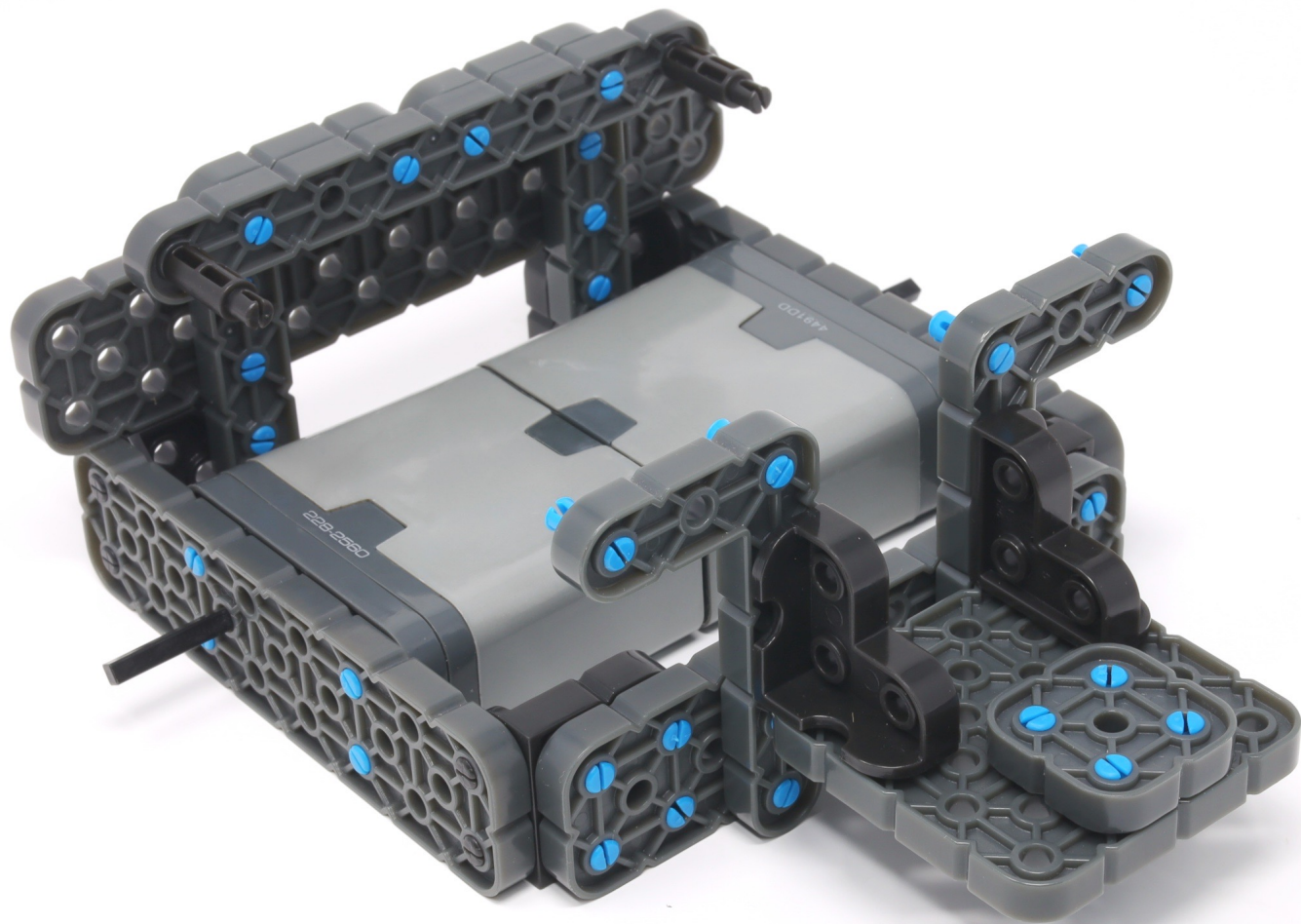






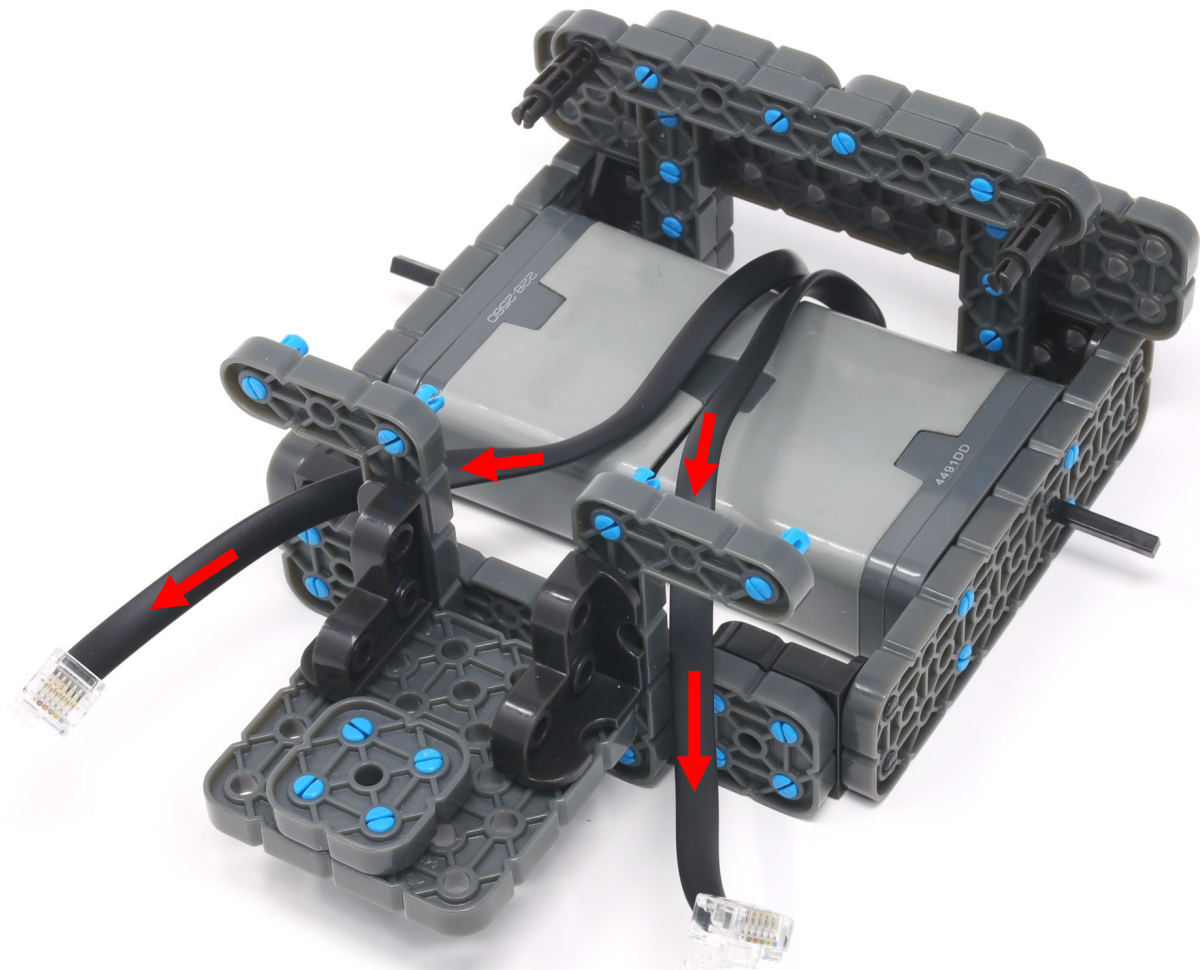














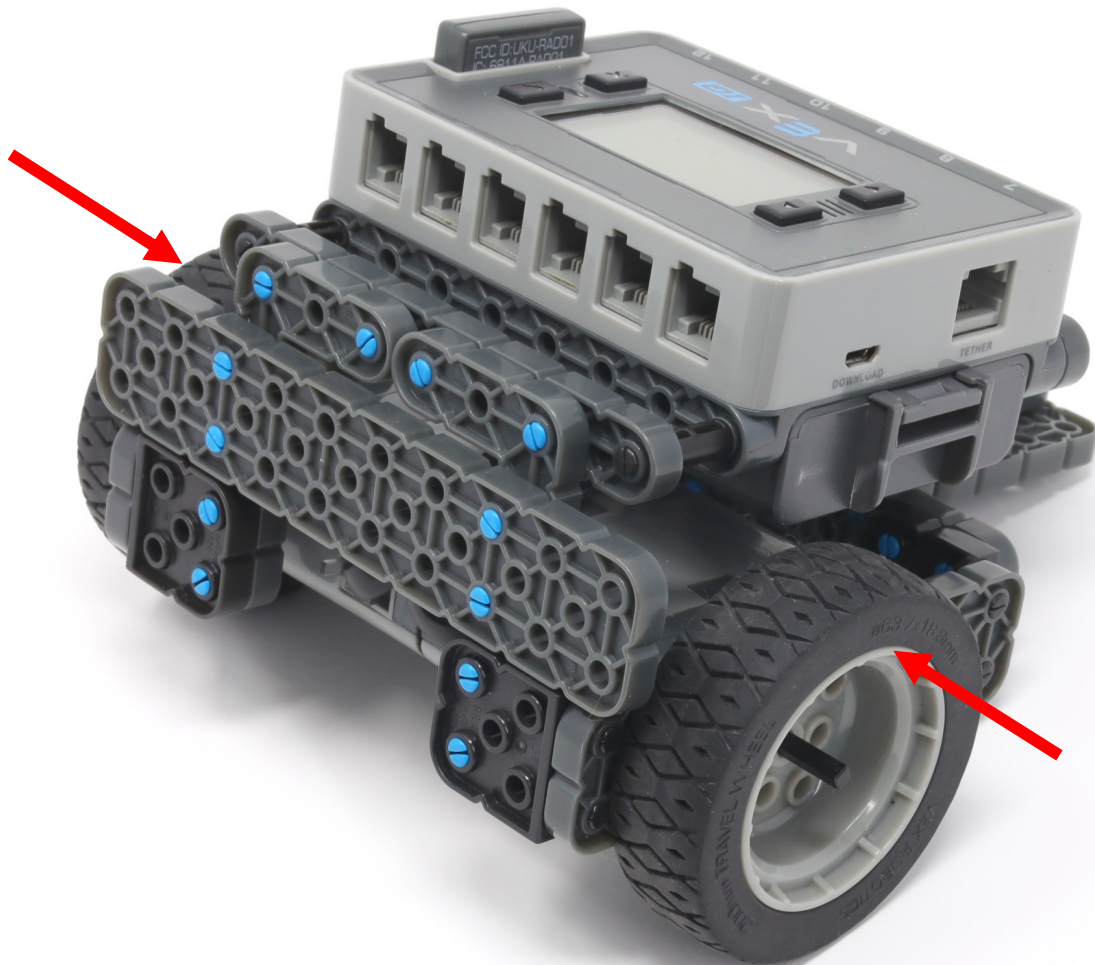
7 = Left Motor
12 = Right Motor

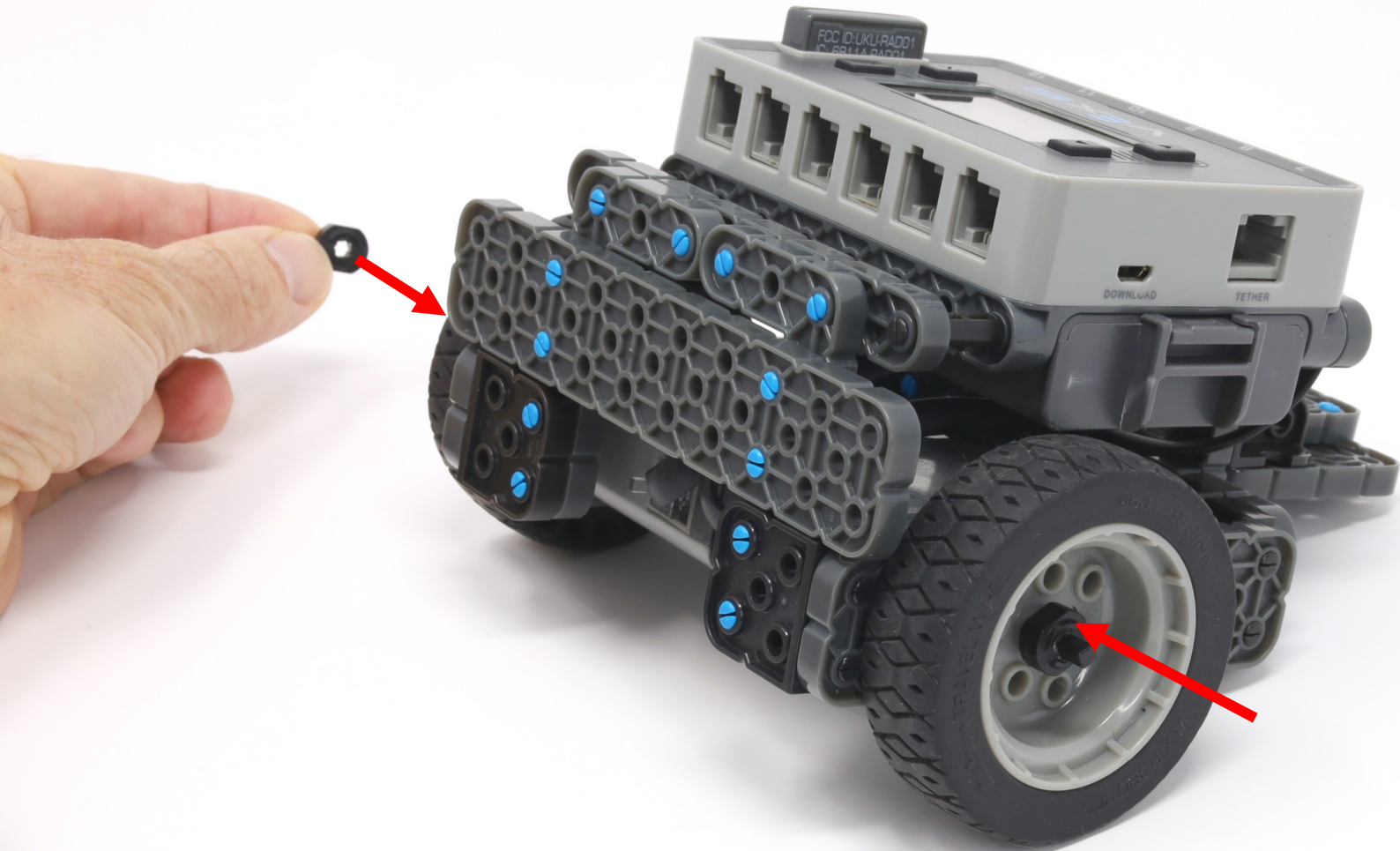




(metal)









200 mm







10 = Gyro



36 mm



23 mm



It will also work without the tire, if your small tires are missing or damaged, but it drives smoother with the tire.





23 mm

